



HMI Solution Specification Sheet

- Modern look and feel with a consistent design through the entire panel line
- Dimmable high-resolution TFT display with fast touch response
- Higher user confidence with clear, easy-to-read display
- Flush surface that is easy to clean
- Reliable and robust aluminum housing
- Available in wide-screen with 30% larger viewing area
- Flexibility guaranteed with long list of drivers from all major automation vendors

Whatever your application, we have the hardware to match it, from the efficient 7 inch operator panel to the high-performance 12 inch. All with the same look and feel. Your optivis application project can naturally be scaled to suit the display, ensuring a flexible and competitive solution.

The panels offer the latest technology with high-performance CPUs and LED backlight, resulting in an easy-to-read clear screen with wide viewing angles. Fast, easy mounting and a compact format makes it convenient to install in your panel and you can rest assured that you've picked a solution created for a long and reliable life in real-world applications.

Efficient and modern HMI software

The iX software takes you fast and efficiently from idea to running system. Filled with smarter design and engineering tools and solid HMI functionality, iX provides state-of-the-art HMI graphics for your applications in an open platform: Flexible and open for advanced programmers, yet easy to use and filled with ready-made features resulting in efficient, flexible project development for all. Unlimited iX Runtime software is included in this operator panel.

Connectivity and expansion

Drivers to equipment from all major automation vendors, two built-in Ethernet ports that let you separate the office network from the industrial, and fieldbus expansion option (with expansion module), all ensure a flexible application which you can optimize to your specific needs.

Usability

Higher user confidence in your application with bright high-resolution display and fast touch response. The brilliant widescreen display provides a 30% larger viewing area, which expands display capabilities for complex operating screens. Easy mounting and access to connections save time for engineers. Support for media objects such as web pages, PDF and video increase the user experience and efficiency of operation.

Quality

With a robust IP65 lightweight aluminum construction, this is a reliable operator panel which meets environmental requirements. Built-in quality through design.

Specification

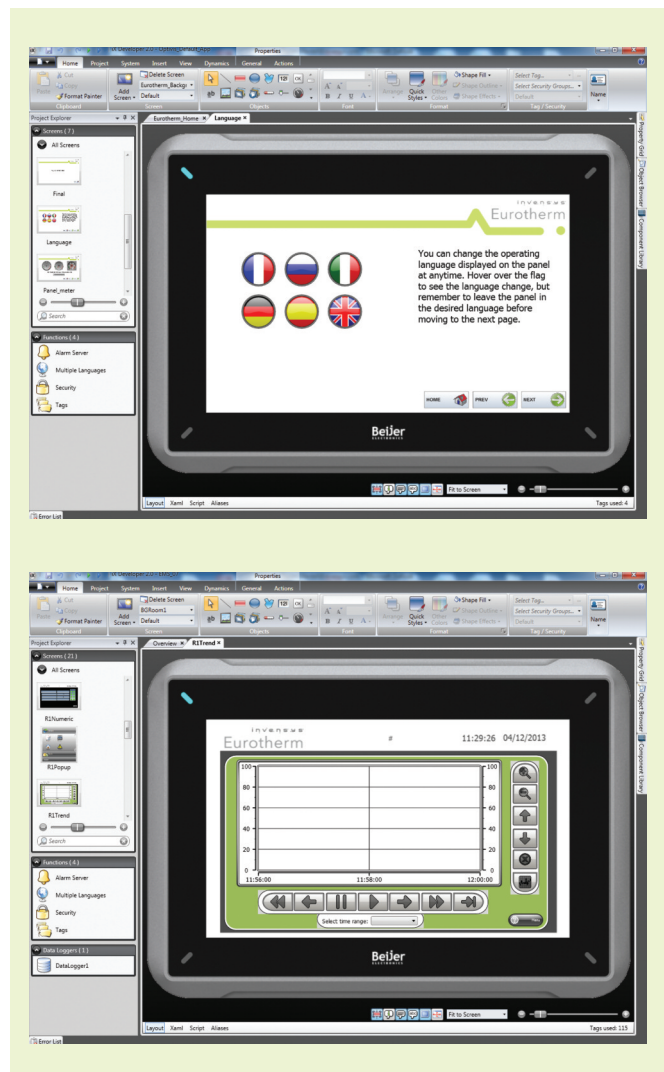
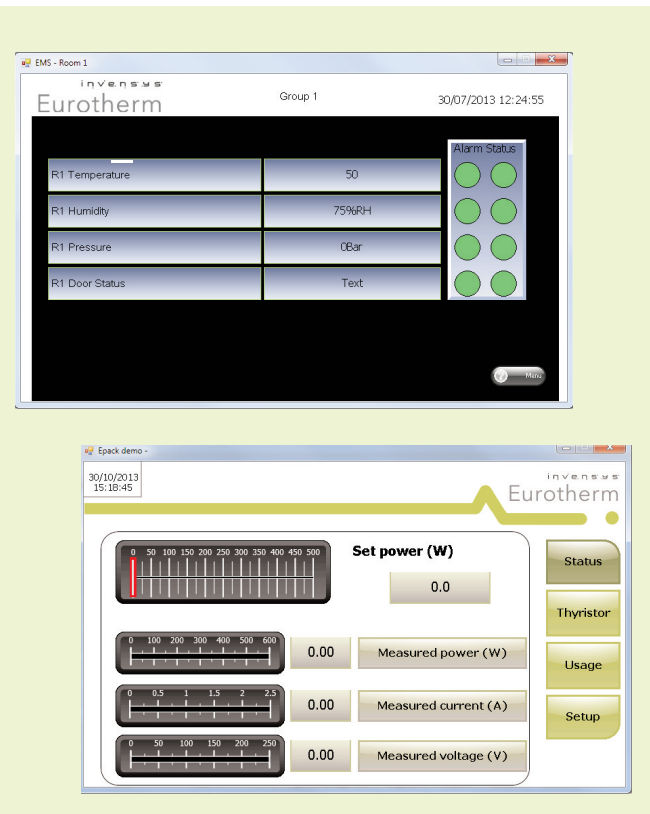
Front panel:	07B: 204W x 143H x 7mmD 12B: 340W x 242H x 7mmD
Mounting depth:	07B: 43mm (143mm including clearance) 12B: 72mm (172mm including clearance)
Standalone mounting:	VESA 75 x 75 Note: Maximum screw length for VESA mounting is 4mm. Usage of longer screws may lead to damage
Front panel seal:	IP 65
Rear panel seal:	IP 20
Touch screen material:	Polyester on glass, resistive
Touch screen operations:	Overlay: Autoflex EBA 180L 1million finger touch operations
Reverse side material:	Powder-coated aluminum
Frame material:	Powder-coated aluminum
Weight:	07B: 1.010 kg 12B: 2.6kg
Serial port for COM1 RS232 and COM2 RS422/RS485:	9-pin D-sub contact with RS232 RTS/CTS, chassis-mounted female with standard locking screws 4-40UNC
Serial port for COM3 RS232 and COM4 RS422/RS485:	9-pin D-sub contact with RS422 RTS, chassis-mounted female with standard locking screws 4-40UNC
Ethernet:	1 x 10/100/1000Mbit/s and 1 x 10/100Mbit/s. Shielded RJ45
USB:	3 x USB Host 2.0, max output current 500mA
Processor:	Intel® Atom
External storage media:	1 x SD card (not supplied)
Memory RAM:	1GB
LED:	1 x multi-color
Real time clock:	Yes (on chip)
Power consumption at rated voltage:	07B: 14W 12B: 22W
Fuse:	3.15A Slow
Power supply:	+24V dc (18-32V dc) CE: The power supply must conform with the requirements according to IEC 60950 and IEC 61558-2-4 UL and cUL: The power supply must conform with the requirements for class II power supplies
Display:	07B: TFT-LCD. 800 x 480 pixels, 262K colors LED backlight 12B: TFT-LCD. 1280 x 800 pixels, 16.7million 262K colors LED backlight
Active area of display:	07B: 152.4W x 91.4mmH 12B: 261.1W x 163.2mmH
Operating temperature:	-10°C to +50°C
Storage temperature:	-20°C to +70°C
Relative humidity:	5%-85% non-condensed
Approvals and certifications:	Information is available on the web site

Ordering Code

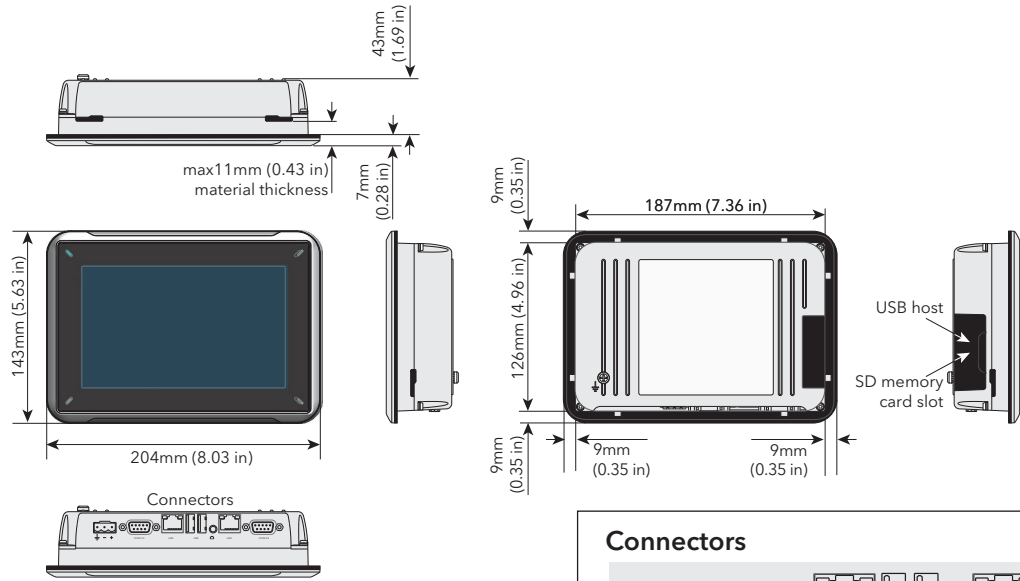
OPTIVIS	1	2	3
		IXX	

Basic Product	
OPTIVIS	HMI Solution
1 Display Size	
07B	7" TFT-LCD operator panel (800 x 480 pixels)
12B	12.1" TFT-LCD WXGA operator panel (1280 x 800 pixels)

2 Operating System	
IXX	iX Runtime
3 iX Developer Environment	
XXXXX	None
IXDEV	iX Developer Software



optimis 07B Mechanical details



Connectors

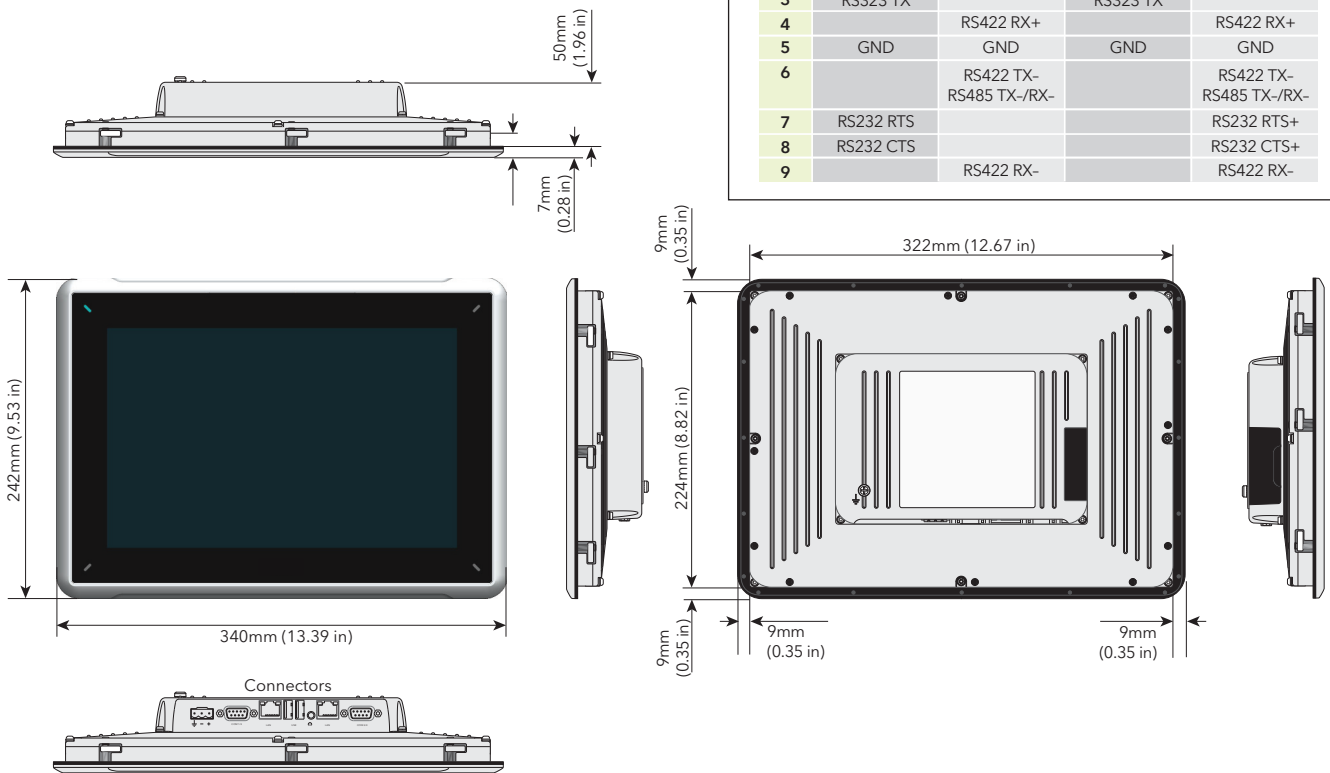


Pos.	Connector	Description
1	Power supply	+24V dc (18-32V dc)
2	COM1/2	Communication Ports
3	LAN (Port2)	1 x 10/100 Base-T (shielded RJ-45)
4	USB	2 x USB Host 2.0, max Output Current 500mA
5	Headphone	Headphone Connector
6	LAN (Port1)	1 x 10/100/1000 Base-T (shielded RJ-45)
7	COM3/4	Communication Ports

Communication Ports

Pin	Serial Port 9-pin female		Serial Port 9-pin female	
	COM1	COM2	COM3	COM4
1		RS422 TX+ RS485 TX+/RX+		RS422TX+ RS485TX+/RX+
2	RS323 RX		RS323 RX	
3	RS323 TX		RS323 TX	
4		RS422 RX+		RS422 RX+
5	GND	GND	GND	GND
6		RS422 TX- RS485 TX-/RX-		RS422 TX- RS485 TX-/RX-
7	RS232 RTS			RS232 RTS+
8	RS232 CTS			RS232 CTS+
9		RS422 RX-		RS422 RX-

optimis 12B Mechanical details



Contact Information

Eurotherm Head Office
Faraday Close, Durrington,
Worthing, West Sussex,
BN13 3PL

Sales Enquiries
T +44 (01903) 695888
F 0845 130 9936

General Enquiries
T +44 (01903) 268500
F +44 (01903) 265982

Worldwide Offices
www.eurotherm.com/global



Scan for
local contacts

Represented by:

© Copyright Eurotherm Limited 2013

Invensys, Eurotherm, the Eurotherm logo, Chessell, EurothermSuite, Mini8, Eycon, Eyris, EPower, EPack, nanodac, piccolo, versadac, optivis, Foxboro and Wonderware are trademarks of Invensys plc, its subsidiaries and affiliates. All other brands may be trademarks of their respective owners.

All rights are strictly reserved. No part of this document may be reproduced, modified, or transmitted in any form by any means, nor may it be stored in a retrieval system other than for the purpose to act as an aid in operating the equipment to which the document relates, without the prior written permission of Eurotherm Limited.

Eurotherm Limited pursues a policy of continuous development and product improvement. The specifications in this document may therefore be changed without notice. The information in this document is given in good faith, but is intended for guidance only.

Eurotherm Limited will accept no responsibility for any losses arising from errors in this document.