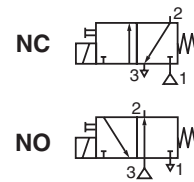




# MICRO SOLENOID VALVES

direct operated  
pad-mounting body  
for subbase M3/M5



**3/2**  
Series  
**188**  
Type  
Micro 10

## GENERAL

<b>Fluid</b>	Air or inert gas, non-lubricated, filtered at 25 µm
<b>Operating pressure</b>	7 bar max.
<b>Ambient temperature</b>	+5°C to +50°C
<b>Flow (Qv at 6 bar)</b>	See «SPECIFICATIONS»
<b>Manual operator</b>	Impulse-type (without manual operator on request)
<b>Switching time</b>	10 ms (<10 ms on request)

## CONSTRUCTION

<b>Body</b>	PA (polyamide) MXD6
<b>Internal parts</b>	Stainless steel, nickel-plated steel, synthetic material, aluminium
<b>Seals</b>	NBR (nitrile), FPM (fluoroelastomer) on request



## ELECTRICAL CHARACTERISTICS

voltage (other voltages on request)	consumption	insulation class	degree of protection	electrical connection
24V = 12V = 5V =	1W - 1,3W	F	IP 40	connector with two 0.5 mm <sup>2</sup> lead wires + built-in LED and electrical protection or cable ends, 0,5 m long
+10%, -15%				

The solenoid valves are designed for continuous operation within the maximum ambient temperature limits.

## SPECIFICATIONS

symbol	orifice size (mm)		flow		operating pressure (bar)		consumption (W)	type of electrical connection (*)	catalogue number
	1 → 2	2 → 3	at 6 bar l/min (ANR)	coefficient Kv	min.	max.			
<b>NC</b> 	0,5	0,7	8	0,12	0	8	1,3	1	<b>18801003</b>
								2	<b>18801076</b>
								3	<b>18801074</b>
								4	<b>18801078</b>
								5	<b>18801072</b>
	0,8	0,8	10	0,15	0	4	1,3	1	<b>18801081</b>
								2	<b>18801082</b>
								3	<b>18801083</b>
								4	<b>18801084</b>
1,0	1,0	12	0,18	0	2,5	1,3	5	<b>18801085</b>	
							1	<b>18801086</b>	
<b>NO</b> 	0,5	0,5	8	0,12	0	6	1,3	1	<b>18801063</b>
								2	<b>18801077</b>
								3	<b>18801075</b>
								4	<b>18801079</b>
								5	<b>18801073</b>
	0,8	0,8	10	0,15	0	3	1,3	1	<b>18801091</b>
								2	<b>18801092</b>
								3	<b>18801093</b>
								4	<b>18801094</b>
								5	<b>18801095</b>
	1,0	1,0	12	0,18	0	1,5	1,3	1	<b>18801096</b>
								2	<b>18801097</b>
								3	<b>18801098</b>
								4	<b>18801099</b>
								5	<b>18801100</b>

(\*) Type 1,2,3, 4 with LED and electrical protection  
1 = horizontal, width 5,08 mm  
2 = vertical, width 5,08 mm

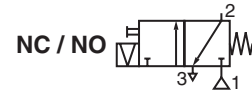
3 = horizontal, width 2,54 mm  
4 = vertical, width 2,54 mm  
5 = cable ends 0,5 m long, 0,25 mm<sup>2</sup>

00217GB-2017/R01 Availability, design and specifications are subject to change without notice. All rights reserved.



# MICRO SOLENOID VALVES

direct operated, with latching coil  
pad-mounting body  
for subbase M3/M5



**3/2**  
Series  
**188**  
Type  
Micro 10

## GENERAL

**Fluid** Air or inert gas, non-lubricated, filtered at 25 µm  
**Operating pressure** 8 bar max.  
**Ambient temperature** +5°C to +50°C  
**Flow (Qv at 6 bar)** See «SPECIFICATIONS»  
**Manual operator** Impulse-type (without manual operator on request)  
**Switching time** 10 ms (<10 ms on request)

## CONSTRUCTION

**Body** PA (polyamide) MXD6  
**Internal parts** Stainless steel, nickel-plated steel, synthetic material, aluminium  
**Seals** NBR (nitrile), FPM (fluoroelastomer) on request



## ELECTRICAL CHARACTERISTICS

voltage (other voltages on request)	consumption	insulation class	degree of protection	electrical connection
24V = 12V = (+10%, -15%) 5V =	1W - 1,3W	F	IP 40	connector with two 0.5 mm <sup>2</sup> lead wires + built-in LED and electrical protection or cable ends, 0,5 m long

The solenoid valves are designed for continuous operation within the maximum ambient temperature limits.

## SPECIFICATIONS

symbol	orifice size (mm)		flow		operating pressure (bar)		consumption (W)	type of electrical connection (*)	catalogue number
	1 → 2	2 → 3	at 6 bar l/min (ANR)	coefficient Kv	min.	max.			
	0,5	0,7	8	0,12	0	7	1,3	1	<b>18801101</b>
								2	<b>18801102</b>
								3	<b>18801103</b>
								4	<b>18801104</b>
								5	<b>18801105</b>
	0,8	0,8	10	0,15	0	3	1,3	1	<b>18801106</b>
								2	<b>18801107</b>
								3	<b>18801108</b>
								4	<b>18801109</b>
								5	<b>18801110</b>
	1,0	1,0	12	0,18	0	1	1,3	1	<b>18801111</b>
								2	<b>18801112</b>
								3	<b>18801113</b>
								4	<b>18801114</b>
								5	<b>18801115</b>

(\*) Type 1,2,3, 4 with LED and electrical protection

1 = horizontal, width 5,08 mm

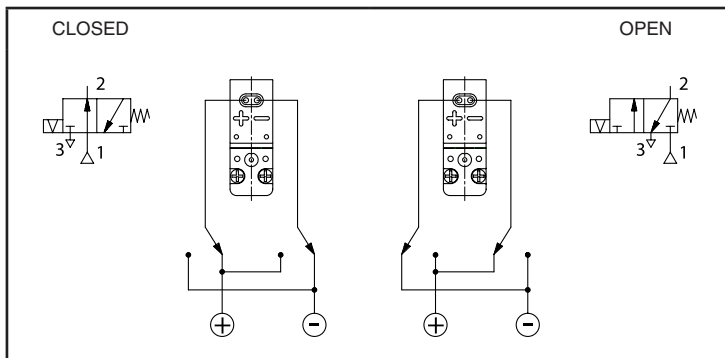
2 = vertical, width 5,08 mm

3 = horizontal, width 2,54 mm

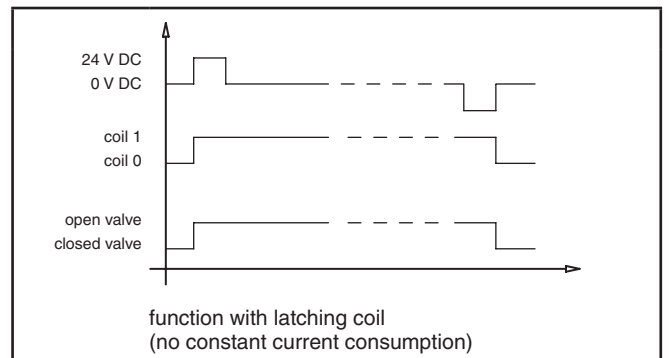
4 = vertical, width 2,54 mm

5 = cable ends 0,5 m long, 0,25 mm<sup>2</sup>

## WIRING DIAGRAM



## FUNCTIONAL DIAGRAM



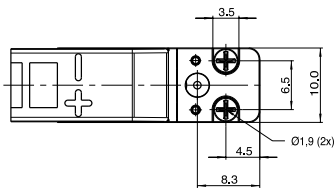
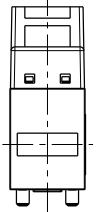
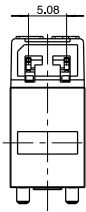
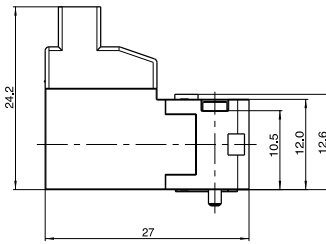
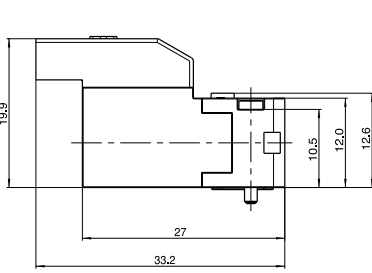
### DIMENSIONS (mm), WEIGHT (kg)



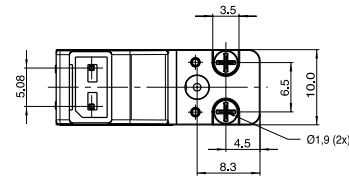
weight
0,0095

**type 1**

**type 2**



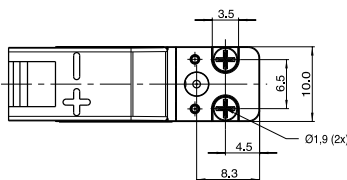
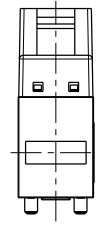
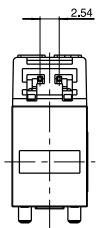
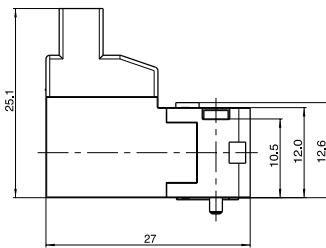
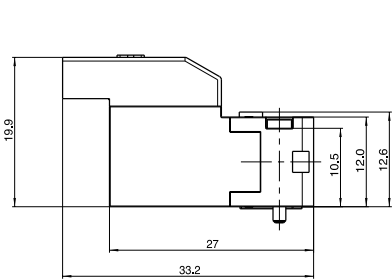
**Scale 1**



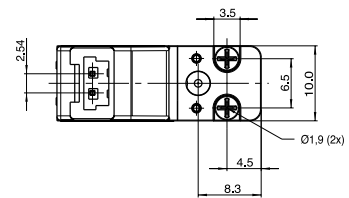
**Scale 1**

**type 3**

**type 4**

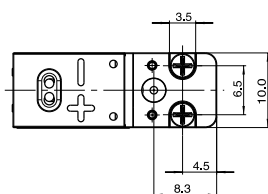
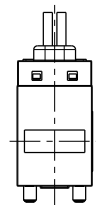
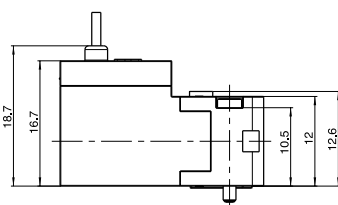


**Scale 1**



**Scale 1**

**type 5**



**Scale 1**

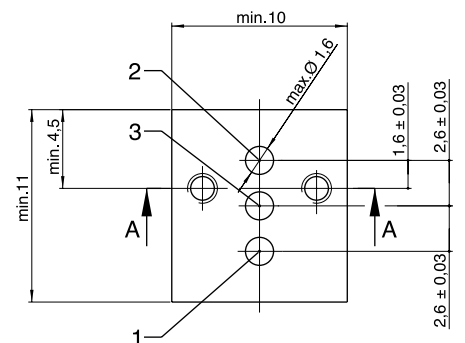
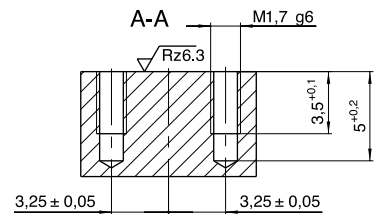
### flange facing

NO
3 = Pressure
2 = Outlet
1 = Exhaust

NC
1 = Pressure
2 = Outlet
3 = Exhaust

Use in vacuum (NO)
3 = Vacuum pump
2 = Outlet
1 = Atmosphere

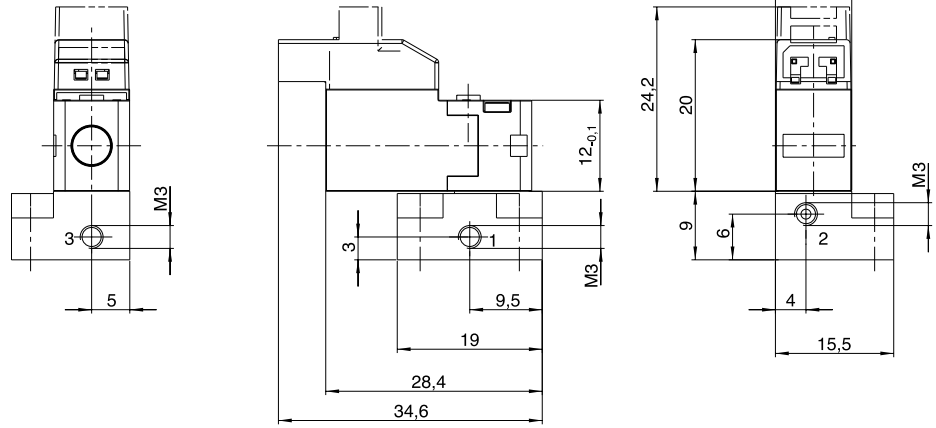
Use in vacuum (NC)
1 = Vacuum pump
2 = Outlet
3 = Atmosphere



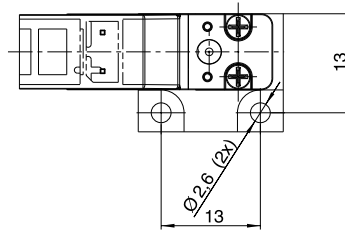
### DIMENSIONS (mm), WEIGHT (kg)

#### solenoid valve mounted on single subbase

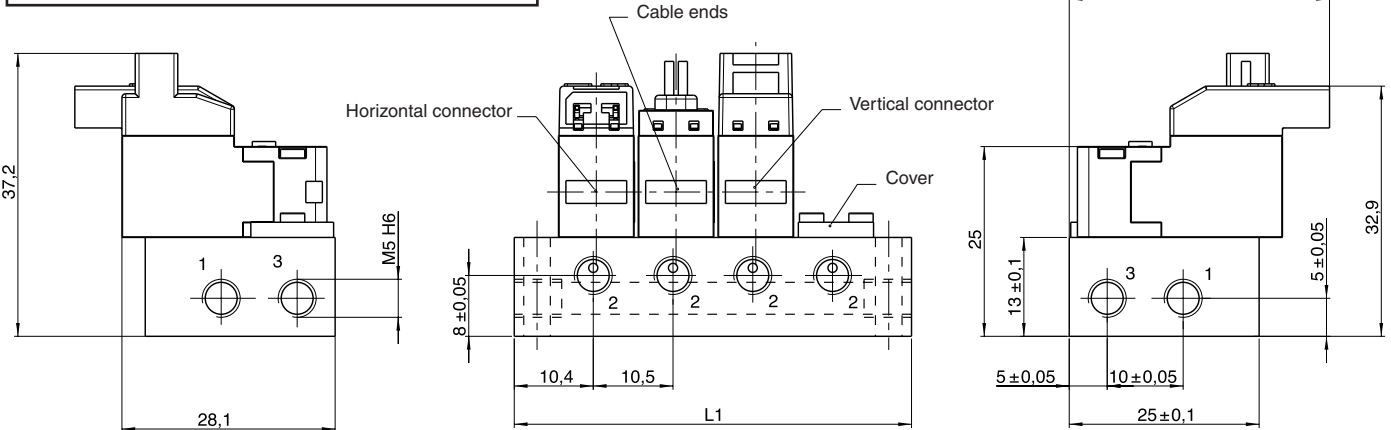
number of valves	subbase catalogue number*	weight
1	35300101	0,015



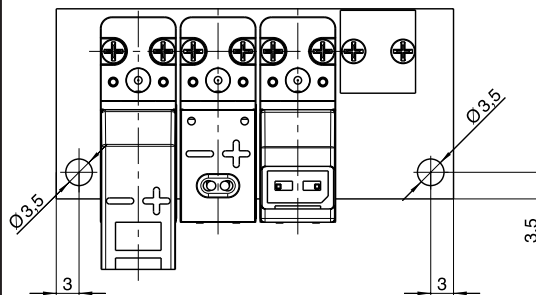
Scale 1



#### solenoid valve mounted on multiple subbase



number of valves	subbase catalogue number*	length		weight
		L1	L2	
2	35300102	33,5	27,5	0,051
3	35300103	44	38	0,069
4	35300104	54,5	48,5	0,086
5	35300105	65	59	0,104
6	35300106	75,5	69,5	0,122
7	35300107	86	80	0,139
8	35300108	96,5	90,5	0,156
9	35300109	107	101	0,175
10	35300110	117,5	111,5	0,193



Scale 1

A : Blanking plate, cat. no. **88135305**

\* The connectors must be ordered separately, please indicate the quantity and one of the following codes:

Connector, 2 wires

Distance between contacts 5,08 mm - length 0,5 m  
- length 1,5 m  
- length 3 m

Distance between contacts 2,54 mm - length 0,5 m  
- length 1,5 m  
- length 3 m

- catalogue number: **88118801**  
- catalogue number: **88118802**  
- catalogue number: **88118803**  
- catalogue number: **88118806**  
- catalogue number: **88118807**  
- catalogue number: **88118808**

