

# ASCO™ Manual Reset Valves

Brass or Stainless Steel Bodies • 1/4" to 1" NPT • Universal Operation • Manual Reset

3/2, 4/2

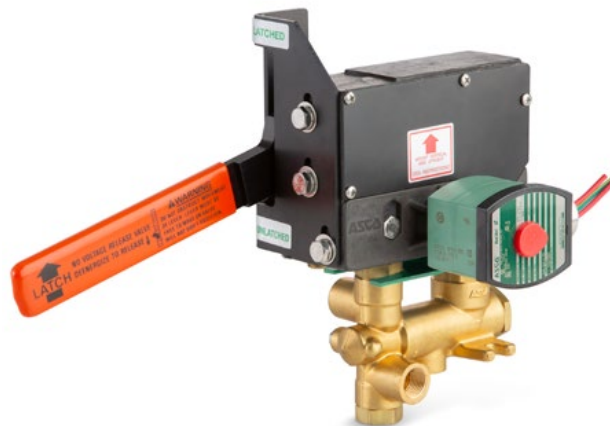
Series

8037/8308/8310

8047/8408/8410

## Features

- High flow/high-pressure bodies with manual reset to prevent inadvertent valve start-up
- Once tripped, can only be manually reset
- Electrically Tripped (trips when energized), No Voltage Release (trips when de-energized), or Free Handle constructions
- Available for Latched Open or Latched Closed operation
- Ideal for controlling critical processes
- Some constructions can control aggressive fluids, including steam
- Intrinsically Safe constructions are available



## Construction

Valve Parts in Contact with Fluids		
Body	Brass	Stainless Steel
Stem	303 Stainless Steel	
Springs	302 Stainless Steel	
Pilot Seat Cartridge	CA (when listed)	
Disc, Diaphragm, Seat	NBR, PA, PTFE, or Stainless Steel, as listed	

## Electrical

Standard Coil and Class of Insulation	Watt Rating and Power Consumption				Spare Coil Part Number	
	DC Watts	AC				
		Watts	VA Holding	VA Inrush	AC	AC
F	-	20	45	96	272610	-
H	30.8	-	-	-	-	501695

**Standard Voltages:** 24, 120, 240, 480 volts AC, 60 Hz. 6, 12, 24, 120, 240 volts DC. Must be specified when ordering. Other voltages are available when required.

**Notes:** 125 and 250 volts DC are battery voltages applied in power plants. Special valves are available to pilot control valves in power plants.

*Consult your local ASCO sales office for a listing.*

## Solenoid Enclosures

**Standard:** Watertight, Types 1, 2, 3, 3S, 4, and 4X.

**Optional:** Explosionproof and Watertight, Types 3, 3S, 4, 4X, 6, 6P, 7, and 9.

## Nominal Ambient Temp. Ranges

AC: -20F to 104F (-29C to 40C)

DC: -20F to 140F (-29C to 60C)

*Refer to Engineering Section for details.*

## Approvals

CSA certified. Some constructions meet shock and vibration ISA S71.03C2.

*Refer to Engineering Section for details.*

## Operation Alternatives

**Electrically Tripped** – Valves move to latched position when the solenoid is de-energized, trips when they receive a continuous or momentary (at least 0.3 seconds) electrical signal. When tripped, they can be manually cycled open/closed, but must be reset when the solenoid has once again been de-energized.

**No Voltage Release** – Valves move to latched position when the solenoid is energized, trips when de-energized. When tripped, they can be manually cycled open/closed, but must be reset when the solenoid has once again been energized.

**Free Handle** – Valves move to latched position when the solenoid is energized, trips when de-energized. They cannot be manually cycled open/closed when de-energized. They can be manually cycled open/ closed or reset only when energized.

# ASCO™ Manual Reset Valves

Brass or Stainless Steel Bodies • 1/4" to 1" NPT • Universal Operation • Manual Reset

**3/2, 4/2  
Series**  
**8037/8308/8310**  
**8047/8408/8410**

## Specifications (English units)

Pipe Size (in)	Orifice Size (in)	Cv Flow Factor	Operating Pressure Differential (psi)			Max. Fluid Temp. °F		No Voltage Release	Electrically Tripped	Const. Ref.	Flow Diagram	Watt Rating/ Class of Coil Insulation	
			Min.	Max. AC	Max.DC	AC	DC	Catalog Number	Catalog Number			AC	DC
3/2 UNIVERSAL OPERATION (Except as Noted ①), Brass Body with NBR Disc/Diaphragm (CA Pilot Cartridge) for Air-Inert Gas and Water. This group of valves meets shock and vibration ISA S71.03C2.													
1/4	11/64	0.38	0	125	125	180	180	8308G040	8310G040	1	B	20/F	30.8/H
3/8	5/8	3	10	250	250	180	180	8308G041①②	8310G041①②	2	C	20/F	30.8/H
1/2	5/8	4	10	250	250	180	180	8308G042①②	8310G042①②	2	C	20/F	30.8/H
3/4	11/16	5.5	10	250	250	180	180	8308G043①②	8310G043①②	3	C	20/F	30.8/H
1	1	13	10	125	125	180	180	8308G050①②	8310G050①②	5	C	20/F	30.8/H
3/2 UNIVERSAL OPERATION, Brass Body with Stainless Steel Seats and Discs for Air-Inert Gas, Water and Light Oil													
1/4	1/4	0.45	0	125	125	200	200	8308G044	8310G044	4	A	20/F	30.8/H
3/8	1/4	0.45	0	125	125	200	200	8308G045	8310G045	4	A	20/F	30.8/H
1/2	5/16	0.75	0	125	125	200	200	8308G046	8310G046	4	A	20/F	30.8/H
3/2 UNIVERSAL OPERATION, Brass Body with NBR Seats and PA Discs for Air-Inert Gas, Water and Light Oil													
1/4	1/4	0.39	0	125	125	180	180	8308G044R	8310G044R	4	A	20/F	30.8/H
3/8	1/4	0.39	0	125	125	180	180	8308G045R	8310G045R	4	A	20/F	30.8/H
1/2	5/16	0.53	0	125	125	180	180	8308G046R	8310G046R	4	A	20/F	30.8/H
3/2 UNIVERSAL OPERATION, Stainless Steel Body with FKM Discs for Air-Inert Gas and Water													
1/4	1/8	0.21	0	125	125	180	180	8308G011	8310G011	1	B	20/F	30.8/H
3/2 UNIVERSAL OPERATION, Stainless Steel Body with Stainless Steel Seats and Discs for Corrosive Service													
1/2	5/16	0.75	0	125	125	200	200	8308G047	8310G047	4	A	20/F	30.8/H
Free Handle Construction													
3/2 UNIVERSAL OPERATION, Brass Body with NBR Discs for Air-Inert Gas and Water													
1/4	11/64	0.38	0	125	125	180	180	8037G014		6	D	20/F	30.8/H
3/2 UNIVERSAL OPERATION, Brass Body with PTFE Seats and FKM Discs for Air-Inert Gas, Water and Light Oil													
1/4	3/16	0.70	0	125	125	160	160	8037G008①		7	E	20/F	30.8/H
3/8	3/16	0.70	0	125	125	160	160	8037G010①		7	E	20/F	30.8/H
3/2 UNIVERSAL OPERATION, Stainless Steel Body with FKM Discs for Air-Inert Gas and Water													
1/4	1/8	0.21	0	125	125	180	180	8037G012		6	D	20/F	30.8/H
4/2 BRASS BODY with PTFE + FKM Seats and Discs for Air and Inert Gas													
1/4	3/16	0.70	0	250	250	160	160	8408G006	8410G006	8	-	20/F	30.8/H
3/8	3/16	0.70	0	250	250	160	160	8408G007	8410G007	8	-	20/F	30.8/H
4/2 BRASS BODY with NBR Seats and Discs (CA Pilot Cartridge) for Air, Inert Gas, Water, and Light Oil. This group of valves meets shock and vibration ISA S71.03C2.													
1/2	3/8	2.2	10	250	250	200	200	8408G008③	8410G008③	9	-	20/F	30.8/H
3/4	3/4	5.6	10	250	250	200	200	8408G009③	8410G009③	10	-	20/F	30.8/H
1	3/4	5.6	10	250	250	200	200	8408G010③	8410G010③	10	-	20/F	30.8/H

① When ordering, specify suffix "F" for Normally Closed construction or Suffix "G" for Normally Open construction.

② Supplied with CA pilot cartridge.

③ A Minimum Operating Pressure Differential must be maintained between the pressure and exhaust ports. Supply and exhaust piping must be full area, unrestricted. ASCO flow controls and other similar components must be installed in the cylinder lines only.

# ASCO™ Manual Reset Valves

Brass or Stainless Steel Bodies • 1/4" to 1" NPT • Universal Operation • Manual Reset

**3/2, 4/2  
Series**  
**8037/8308/8310**  
**8047/8408/8410**

## Specifications (Metric units)

Pipe Size (in)	Orifice Size (mm)	Kv Flow Factor (m³/h)	Operating Pressure Differential (bar)			Max. Fluid Temp. °C		No Voltage Release	Electrically Tripped	Const. Ref.	Flow Diagram	Watt Rating/ Class of Coil Insulation	
			Min.	Max. AC	Max.DC	AC	DC	Catalog Number	Catalog Number			AC	DC
3/2 UNIVERSAL OPERATION (Except as Noted ① ), Brass Body with NBR Disc/Diaphragm (CA Pilot Cartridge) for Air-Inert Gas and Water. This group of valves meets shock and vibration ISA S71.03C2.													
1/4	4	0.33	0.0	9	9	82	82	8308G040	8310G040	1	B	20/F	30.8/H
3/8	16	2.57	0.7	17	17	82	82	8308G041①②	8310G041①②	2	C	20/F	30.8/H
1/2	16	3.43	0.7	17	17	82	82	8308G042①②	8310G042①②	2	C	20/F	30.8/H
3/4	17	4.71	0.7	17	17	82	82	8308G043①②	8310G043①②	3	C	20/F	30.8/H
1	25	11.14	0.7	9	9	82	82	8308G050①②	8310G050①②	5	C	20/F	30.8/H
3/2 UNIVERSAL OPERATION, Brass Body with Stainless Steel Seats and Discs for Air-Inert Gas, Water and Light Oil													
1/4	6	0.39	0	9	9	93	93	8308G044	8310G044	4	A	20/F	30.8/H
3/8	6	0.39	0	9	9	93	93	8308G045	8310G045	4	A	20/F	30.8/H
1/2	8	0.64	0	9	9	93	93	8308G046	8310G046	4	A	20/F	30.8/H
3/2 UNIVERSAL OPERATION, Brass Body with NBR Seats and PA Discs for Air-Inert Gas, Water and Light Oil													
1/4	6	0.33	0	9	9	82	82	8308G044R	8310G044R	4	A	20/F	30.8/H
3/8	6	0.33	0	9	9	82	82	8308G045R	8310G045R	4	A	20/F	30.8/H
1/2	8	0.45	0	9	9	82	82	8308G046R	8310G046R	4	A	20/F	30.8/H
3/2 UNIVERSAL OPERATION, Stainless Steel Body with FKM Discs for Air-Inert Gas and Water													
1/4	8	0.18	0	9	9	82	82	8308G011	8310G011	1	B	20/F	30.8/H
3/2 UNIVERSAL OPERATION, Stainless Steel Body with Stainless Steel Seats and Discs for Corrosive Service													
1/2	8	0.64	0	9	9	93	93	8308G047	8310G047	4	A	20/F	30.8/H
Free Handle Construction													
3/2 UNIVERSAL OPERATION, Brass Body with NBR Discs for Air-Inert Gas and Water													
1/4	4	0.33	0	9	9	82	82	8037G014		6	D	20/F	30.8/H
3/2 UNIVERSAL OPERATION, Brass Body with PTFE Seats and FKM Discs for Air-Inert Gas, Water and Light Oil													
1/4	5	0.60	0	9	9	71	71	8037G008①		7	E	20/F	30.8/H
3/8	5	0.60	0	9	9	71	71	8037G010①		7	E	20/F	30.8/H
3/2 UNIVERSAL OPERATION, Stainless Steel Body with FKM Discs for Air-Inert Gas and Water													
1/4	3	0.18	0	9	9	82	82	8037G012		6	D	20/F	30.8/H
4/2 BRASS BODY with PTFE + FKM Seats and Discs for Air and Inert Gas													
1/4	5	0.60	0	17	17	71	71	8408G006	8410G006	8	-	20/F	30.8/H
3/8	5	0.60	0	17	17	71	71	8408G007	8410G007	8	-	20/F	30.8/H
4/2 BRASS BODY with NBR Seats and Discs (CA Pilot Cartridge) for Air, Inert Gas, Water, and Light Oil. This group of valves meets shock and vibration ISA S71.03C2.													
1/2	10	1.89	0.7	17	17	93	93	8408G008③	8410G008③	9	-	20/F	30.8/H
3/4	19	4.80	0.7	17	17	93	93	8408G009③	8410G009③	10	-	20/F	30.8/H
1	19	4.80	0.7	17	17	93	93	8408G010③	8410G010③	10	-	20/F	30.8/H

① When ordering, specify suffix "F" for Normally Closed construction or Suffix "G" for Normally Open construction.

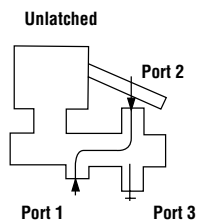
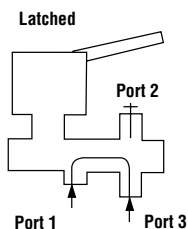
② Supplied with CA pilot cartridge.

③ A Minimum Operating Pressure Differential must be maintained between the pressure and exhaust ports. Supply and exhaust piping must be full area, unrestricted. ASCO flow controls and other similar components must be installed in the cylinder lines only.

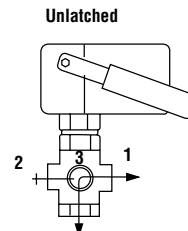
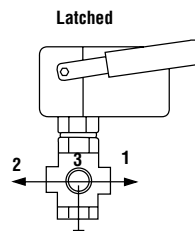
## Flow Diagrams

### Electrically Tripped and No Voltage Release Constructions

Flow Diagram A

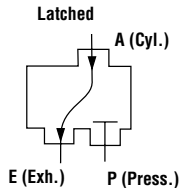
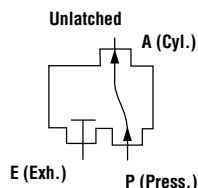


Flow Diagram B

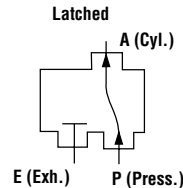
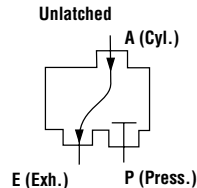


Flow Diagram C

Normally Open

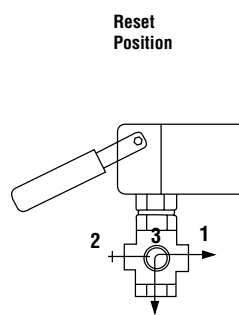
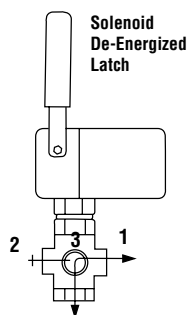
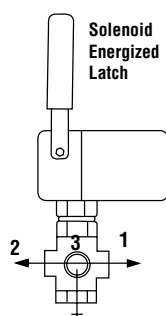


Normally Closed



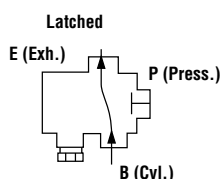
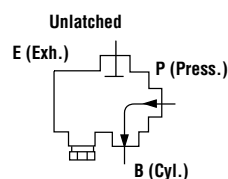
### Free Handle Construction

Flow Diagram D

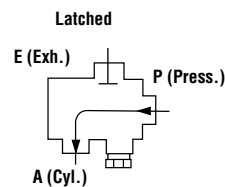
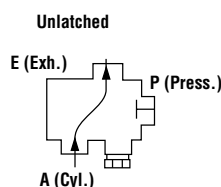


Flow Diagram E

Normally Open



Normally Closed



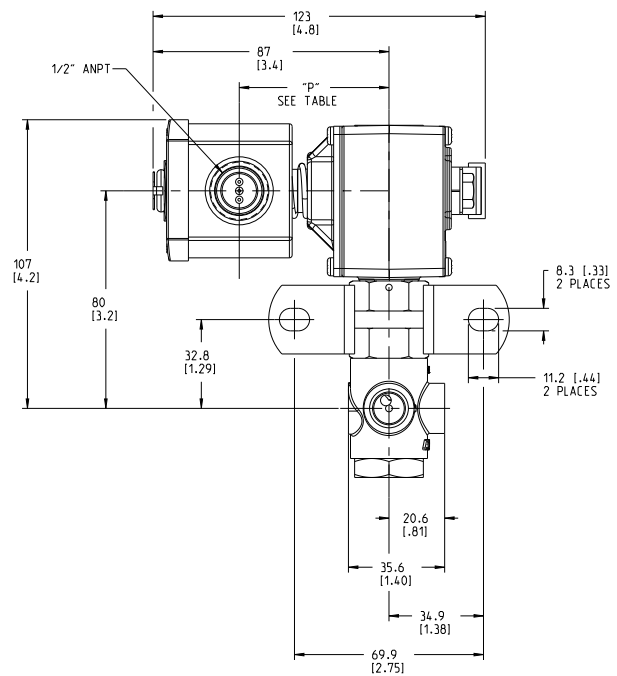
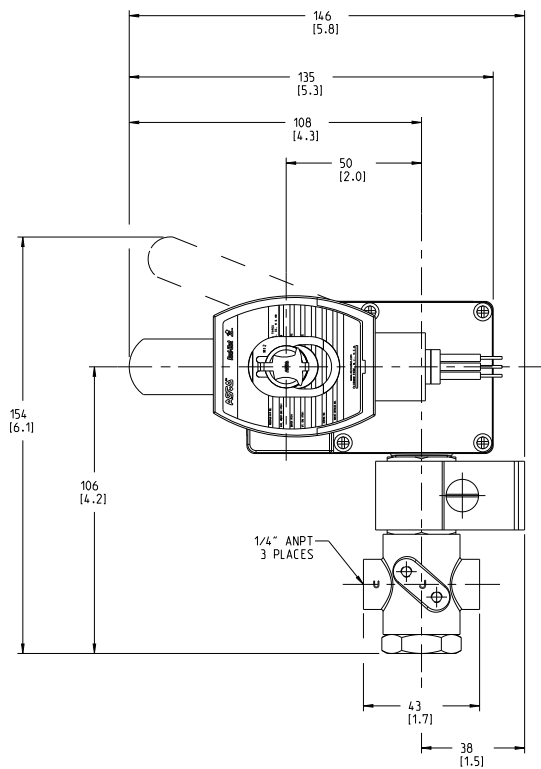
# ASCO™ Manual Reset Valves

Brass or Stainless Steel Bodies • 1/4" to 1" NPT • Universal Operation • Manual Reset

**3/2, 4/2  
Series**  
**8037/8308/8310**  
**8047/8408/8410**

## Dimensions: mm (inches)

Const. Ref. 1



# ASCO™ Manual Reset Valves

Brass or Stainless Steel Bodies • 1/4" to 1" NPT • Universal Operation • Manual Reset

3/2, 4/2

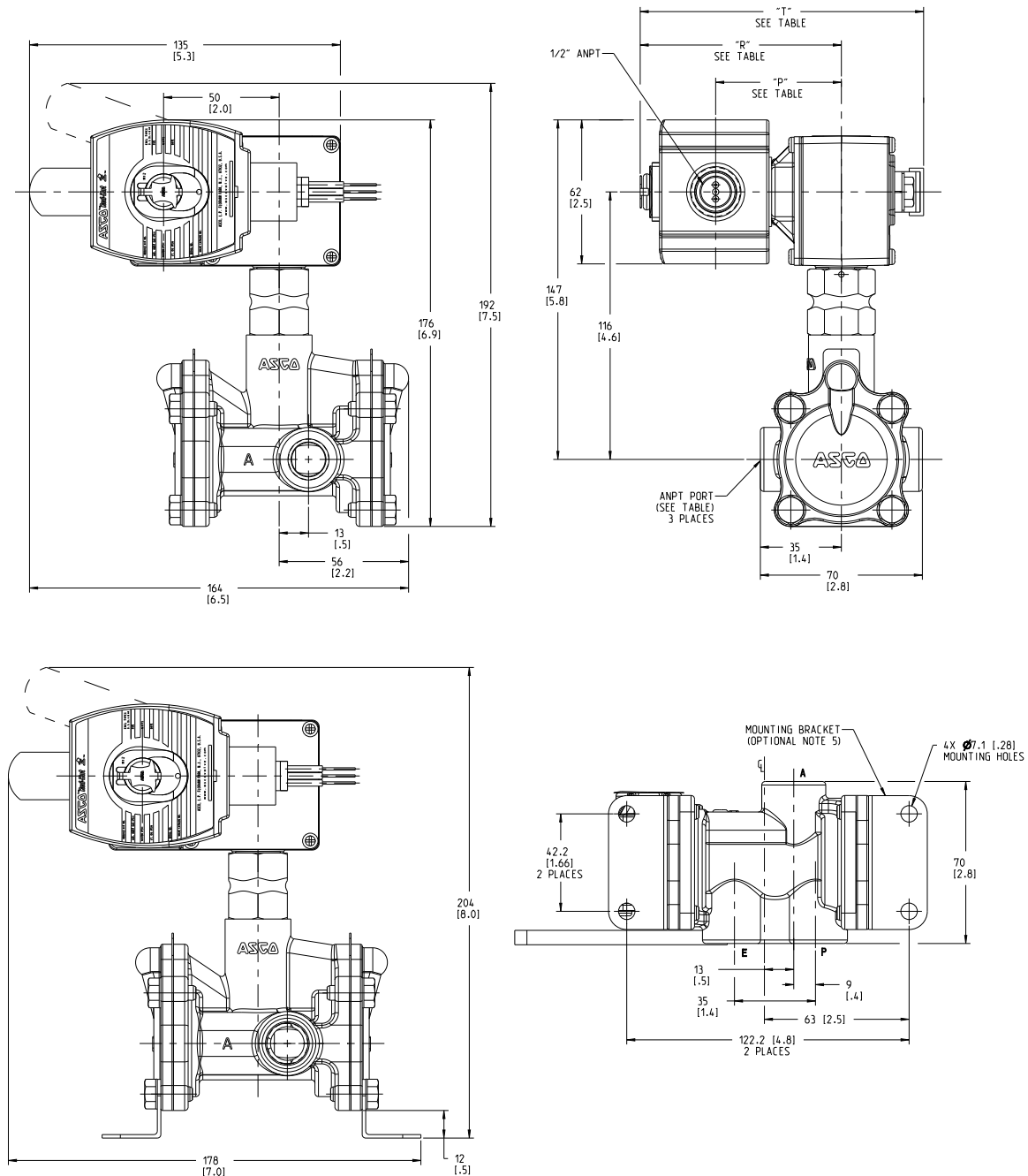
Series

8037/8308/8310

8047/8408/8410

## Dimensions: mm (inches)

### Const. Ref. 2



ANPT	Valve Operation	Movement Construction	P	R	T	Catalog Number
1/2"	Normally Open	Electrically Tripped (TSO)	58 [2.2]	87 [3.4]	123 [4.8]	8310G042G
3/8"						8310G041G
1/2"	Normally Closed					8310G042F
3/8"						8310G041F
1/2"	Normally Open	No Voltage Released (NVR)	54 [2.1]	87 [3.4]	123 [4.8]	8308G042G
3/8"						8308G041G
1/2"	Normally Closed					8308G042F
3/8"						8308G041F

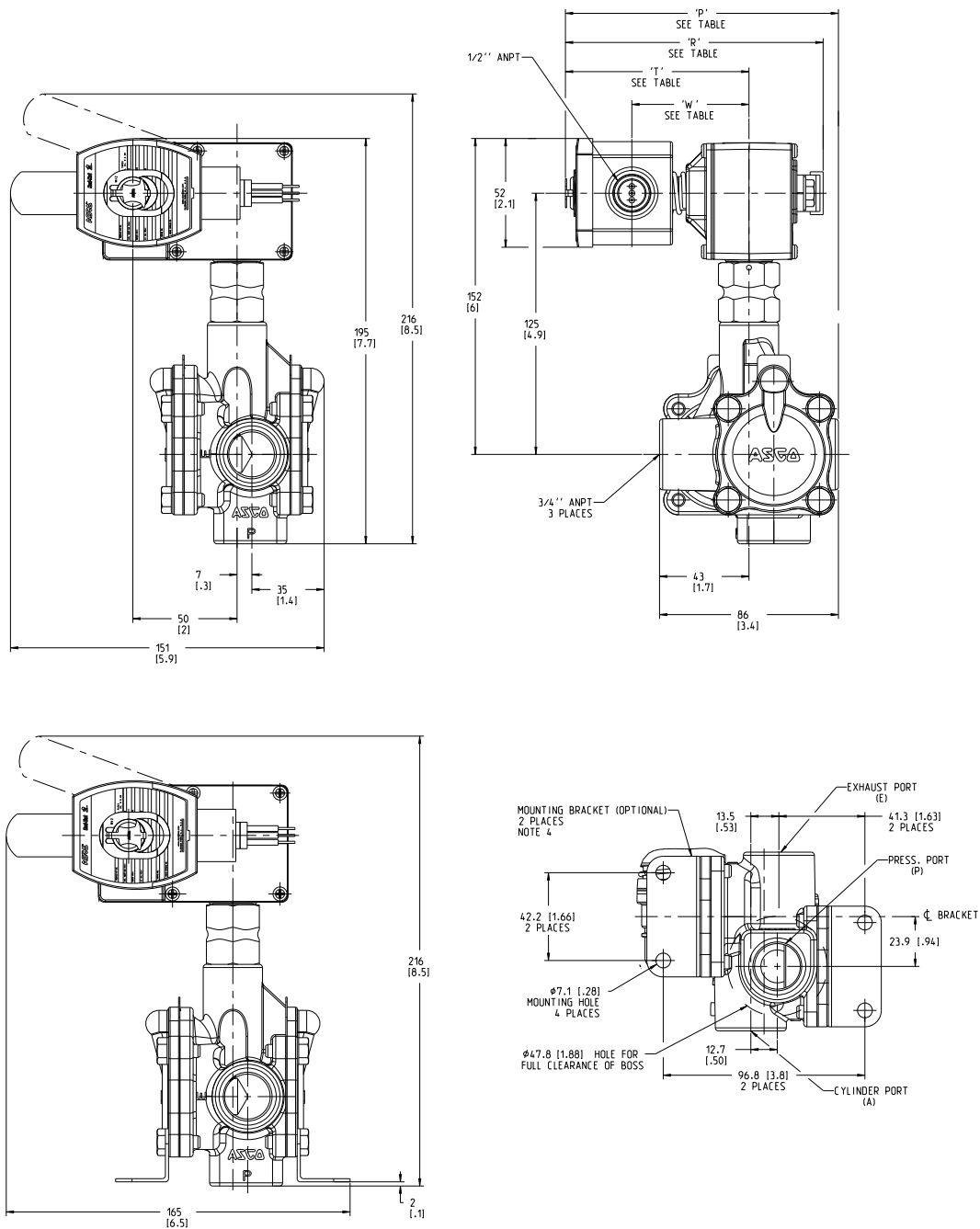
# ASCO™ Manual Reset Valves

Brass or Stainless Steel Bodies • 1/4" to 1" NPT • Universal Operation • Manual Reset

**3/2, 4/2  
Series**  
**8037/8308/8310**  
**8047/8408/8410**

## Dimensions: mm (inches)

Const. Ref. 3



Valve Operation	Movement Construction	P	R	T	W	Catalog Number
Normally Open	Electrically Tripped (TSO)	130 [5.1]	123 [4.8]	87 [3.4]	56 [2.2]	8310G43G
Normally Closed						8310G43F
Normally Open	No Voltage Released (NVR)	131 [5.2]	124 [4.9]	88 [3.5]	56 [2.2]	8308G43G
Normally Closed						8308G43F

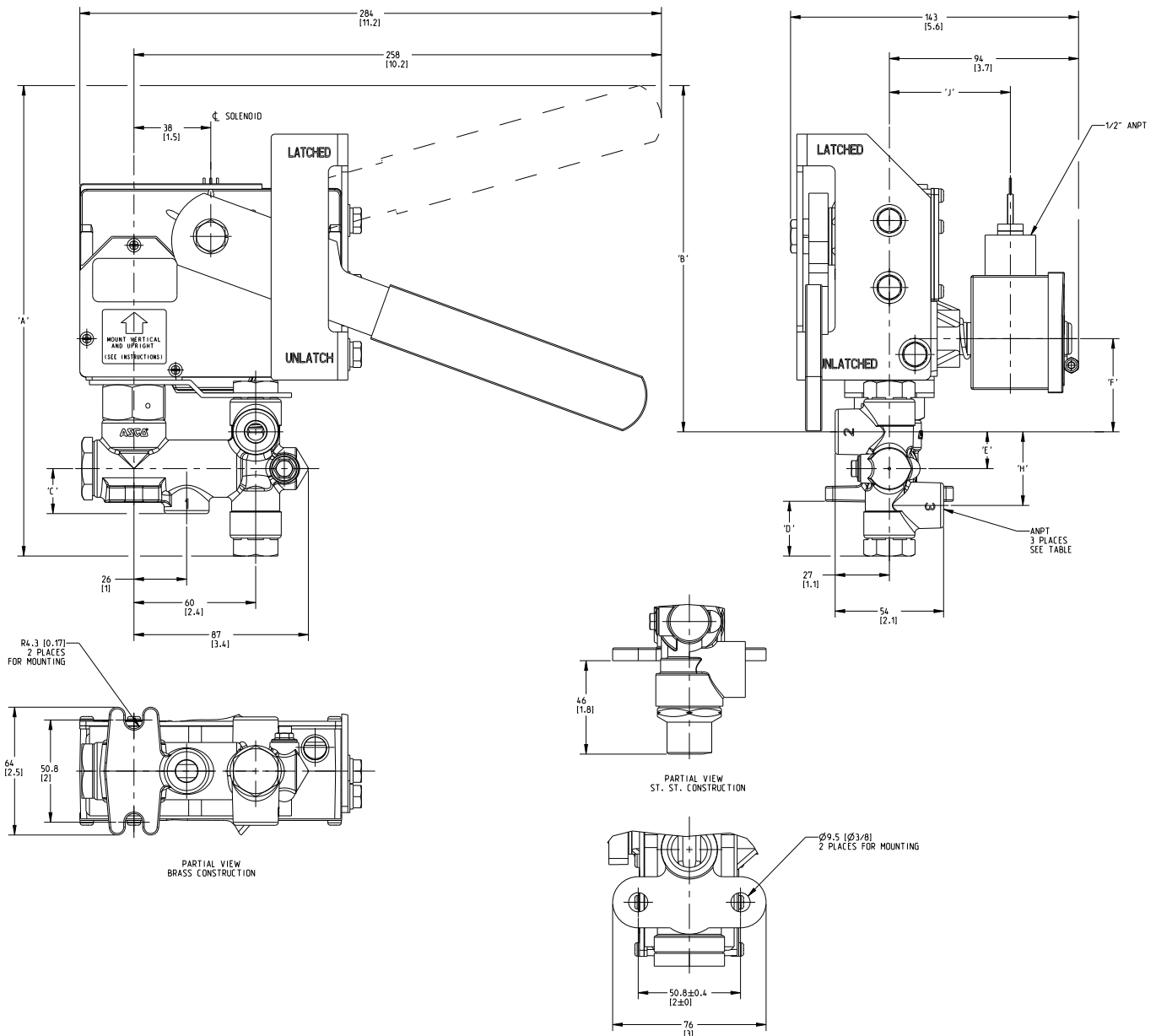
# ASCO™ Manual Reset Valves

Brass or Stainless Steel Bodies • 1/4" to 1" NPT • Universal Operation • Manual Reset

**3/2, 4/2  
Series**  
**8037/8308/8310**  
**8047/8408/8410**

## Dimensions: mm (inches)

Const. Ref. 4



Movement Construction	Pipe Connection ANPT	ORF. DIA.	Body	Seating	A	B	C	D	E	F	H	J	Catalog Number
Electrically Tripped (TSO)	1/4"	6.3 [0.25]	BRASS	RESILENT	232 [9.13]	171 [6.73]	22 [0.88]	27 [1.06]	18 [0.72]	46 [1.82]	37 [1.44]	61 [2.40]	8310G044R
	3/8"												8310G045R
	1/2"	7.9 [0.31]	ST. ST.	METAL	278 [10.94]	188 [7.4]	27 [1.06]	48 [1.89]	24 [0.94]	64 [2.51]	48 [1.89]		8310G046R
	3/8"												8310G047
	1/4"	6.3 [0.25]			232 [9.13]	171 [6.73]	22 [0.88]	27 [1.06]	18 [0.72]	46 [1.82]	37 [1.44]		8310G046
	3/8"												8310G045
No Voltage Released (NVR)	1/4"	6.3 [0.25]	BRASS	RESILENT	232 [9.13]	171 [6.73]	22 [0.88]	27 [1.06]	18 [0.72]	46 [1.82]	37 [1.44]	60 [2.36]	8310G044
	3/8"												8308G044R
	1/2"	7.9 [0.31]	ST. ST.	METAL	278 [10.94]	188 [7.4]	27 [1.06]	48 [1.89]	24 [0.94]	64 [2.51]	48 [1.89]		8308G045R
	3/8"												8308G046R
	1/4"	6.3 [0.25]			232 [9.13]	171 [6.73]	22 [0.88]	27 [1.06]	18 [0.72]	46 [1.82]	37 [1.44]		8308G047
	3/8"												8308G046
	1/4"	6.3 [0.25]	BRASS	RESILENT	232 [9.13]	171 [6.73]	22 [0.88]	27 [1.06]	18 [0.72]	46 [1.82]	37 [1.44]		8308G045
	3/8"												8308G044



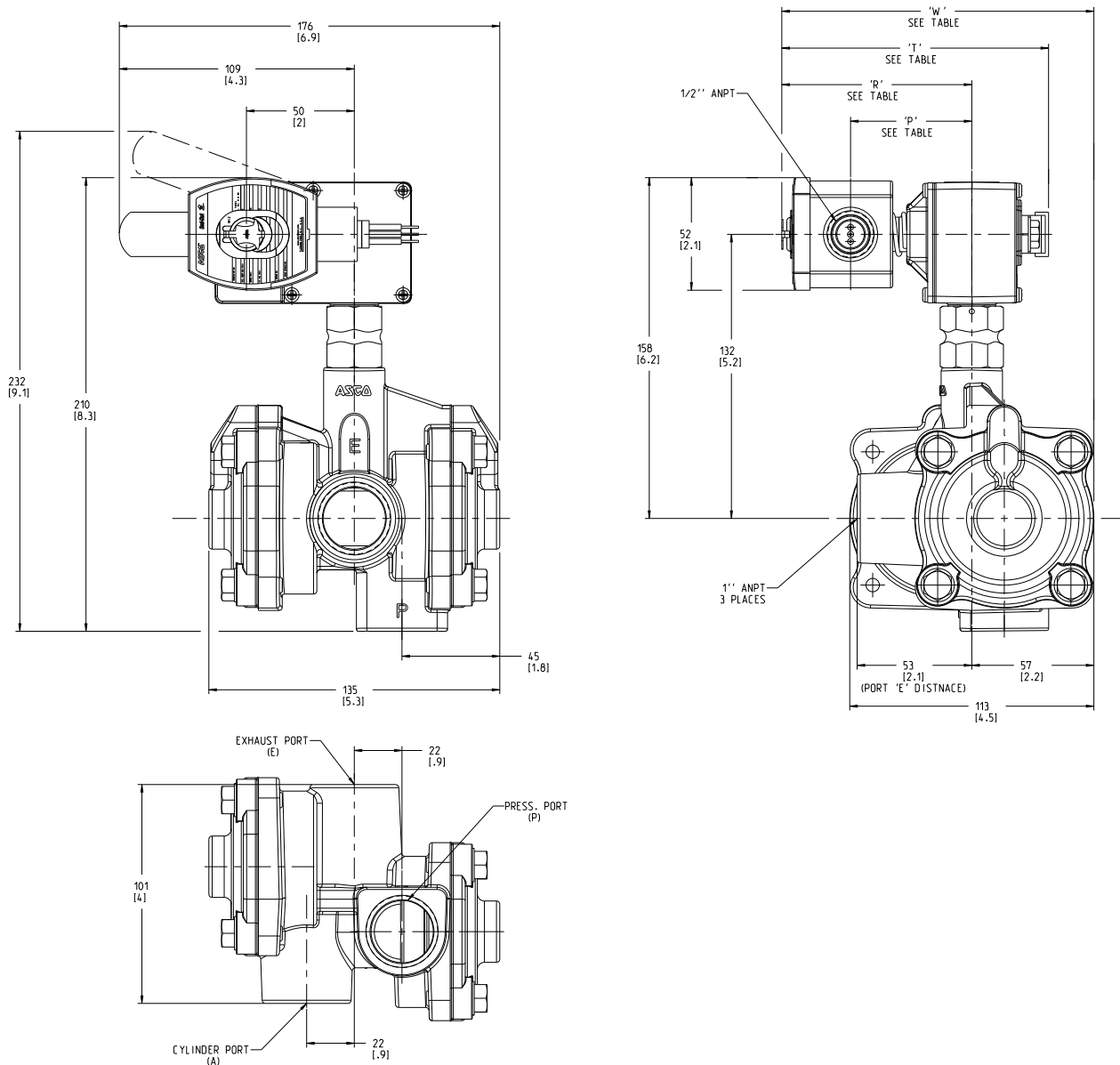
# ASCO™ Manual Reset Valves

Brass or Stainless Steel Bodies • 1/4" to 1" NPT • Universal Operation • Manual Reset

**3/2, 4/2  
Series**  
**8037/8308/8310**  
**8047/8408/8410**

## Dimensions: mm (inches)

Const. Ref. 5



Movement Construction	Valve Operation	P	R	T	W	Catalog Number
Electrically Tripped (TSO)	Normally Open	56	87	123	144	8310G50G
	Normally Closed	[2.2]	[3.4]	[4.8]	[5.7]	8310G50F
No Voltage Released (NVR)	Normally Open	56	88	124	145	8308G50G
	Normally Closed	[2.2]	[3.5]	[4.9]	[5.7]	8308G50F

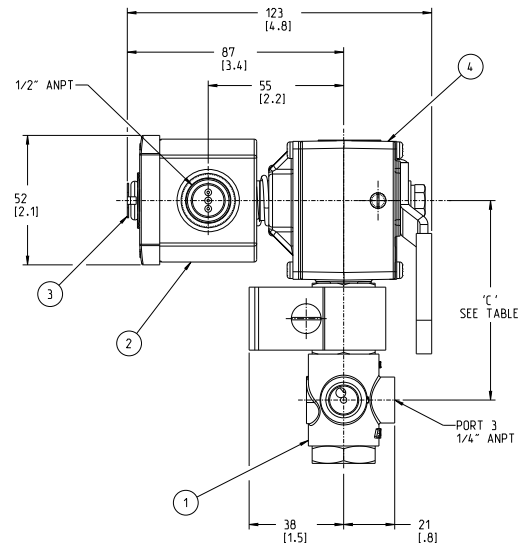
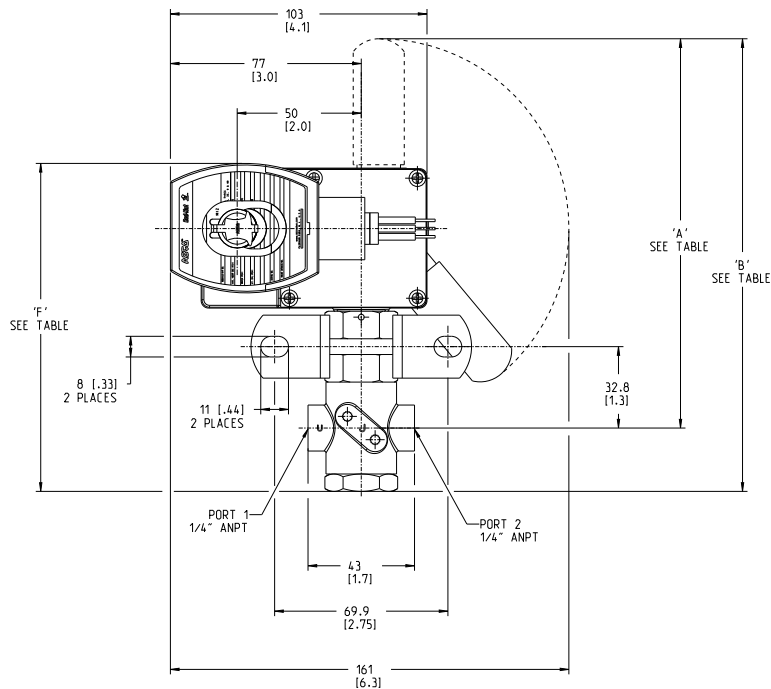
# ASCO™ Manual Reset Valves

Brass or Stainless Steel Bodies • 1/4" to 1" NPT • Universal Operation • Manual Reset

**3/2, 4/2  
Series**  
**8037/8308/8310**  
**8047/8408/8410**

## Dimensions: mm (inches)

Const. Ref. 6



Orifice	Body Material	A	B	C	F	Catalog Number
11/64"	BRASS	157 [6.2]	182 [7.2]	80 [3.1]	132 [5.2]	8037G014
1/8"	ST. ST.	157 [6.2]	182 [7.2]	81 [3.2]	132 [5.2]	8037G012

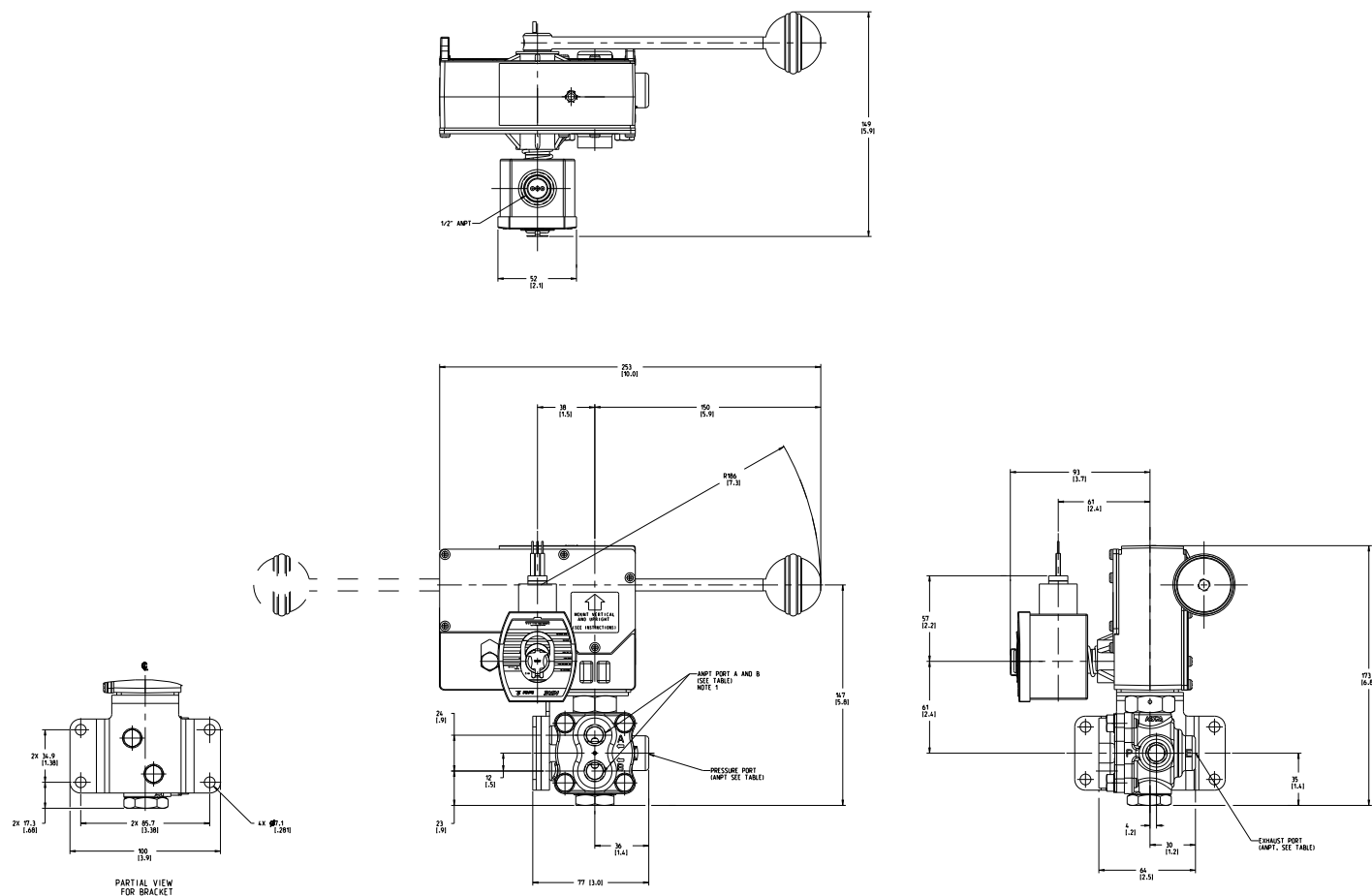
# ASCO™ Manual Reset Valves

Brass or Stainless Steel Bodies • 1/4" to 1" NPT • Universal Operation • Manual Reset

**3/2, 4/2  
Series  
8037/8308/8310  
8047/8408/8410**

**Dimensions:** mm (inches)

**Const. Ref. 7**



# ASCO™ Manual Reset Valves

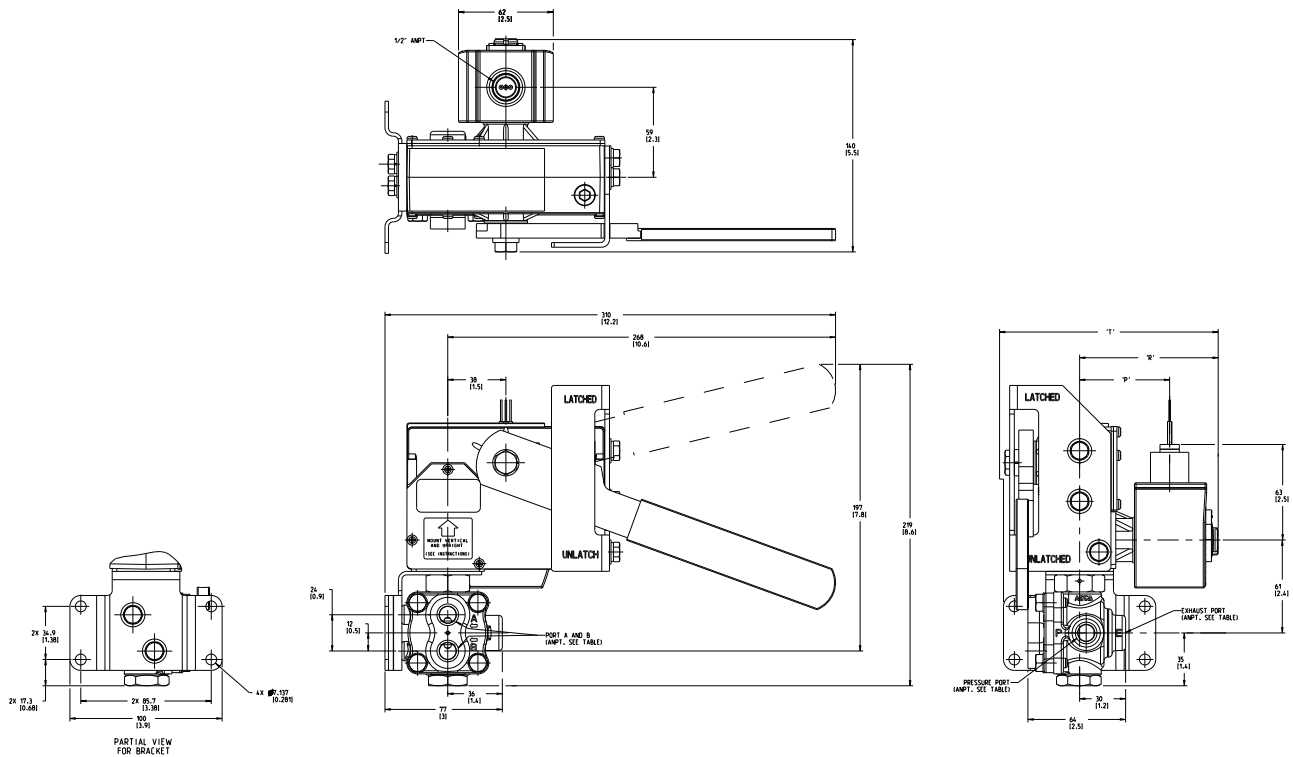
Brass or Stainless Steel Bodies • 1/4" to 1" NPT • Universal Operation • Manual Reset

3/2, 4/2  
Series

8037/8308/8310  
8047/8408/8410

## Dimensions: mm (inches)

Const. Ref. 8



ANPT	Orifice Size	Construction	Movement Construction	P	R	T	Catalog Number
3/8"	3/16"	4 Way	Electrically Tripped (TSO)	62.9 [2.3]	91.4 [3.6]	141.4 [5.6]	8408G007
1/4"							8408G006
3/8"			No Voltage Released (NVR)	59.1 [2.3]	91 [3.6]	141 [5.5]	8410G007
1/4"							8410G006

# ASCO™ Manual Reset Valves

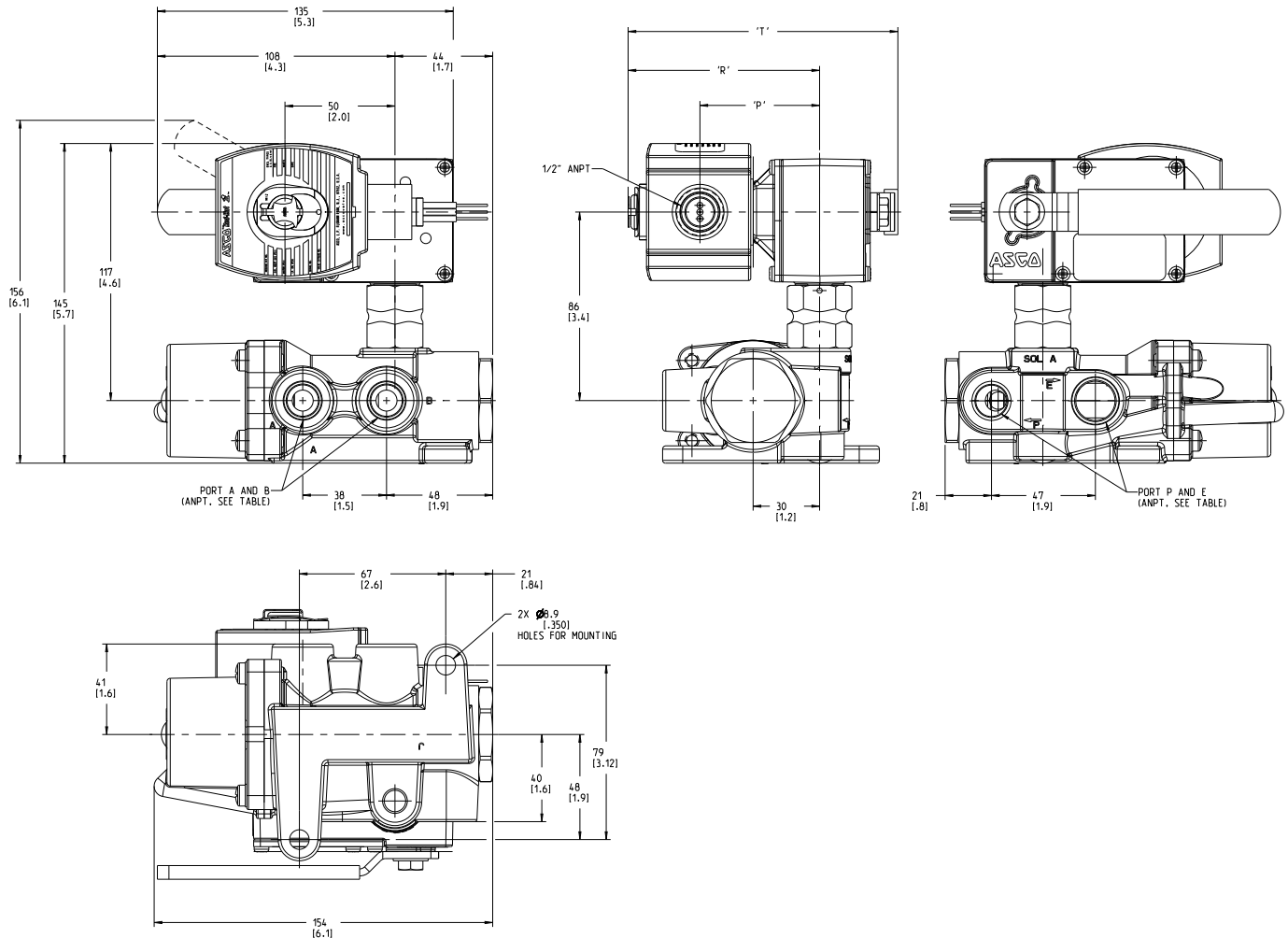
Brass or Stainless Steel Bodies • 1/4" to 1" NPT • Universal Operation • Manual Reset

**3/2, 4/2  
Series**

**8037/8308/8310  
8047/8408/8410**

## Dimensions: mm (inches)

Const. Ref. 9



ANPT	Orifice Size	Construction	Movement Construction	P	R	T	Catalog Number
1/2"	Ø9.5 [3/8"]	4 Way	Electrically Tripped (TSO)	58 [2.3]	86 [3.39]	122 [4.79]	8410G008
			No Voltage Released (NVR)	54 [2.1]	87 [3.42]	123 [4.82]	8408G008

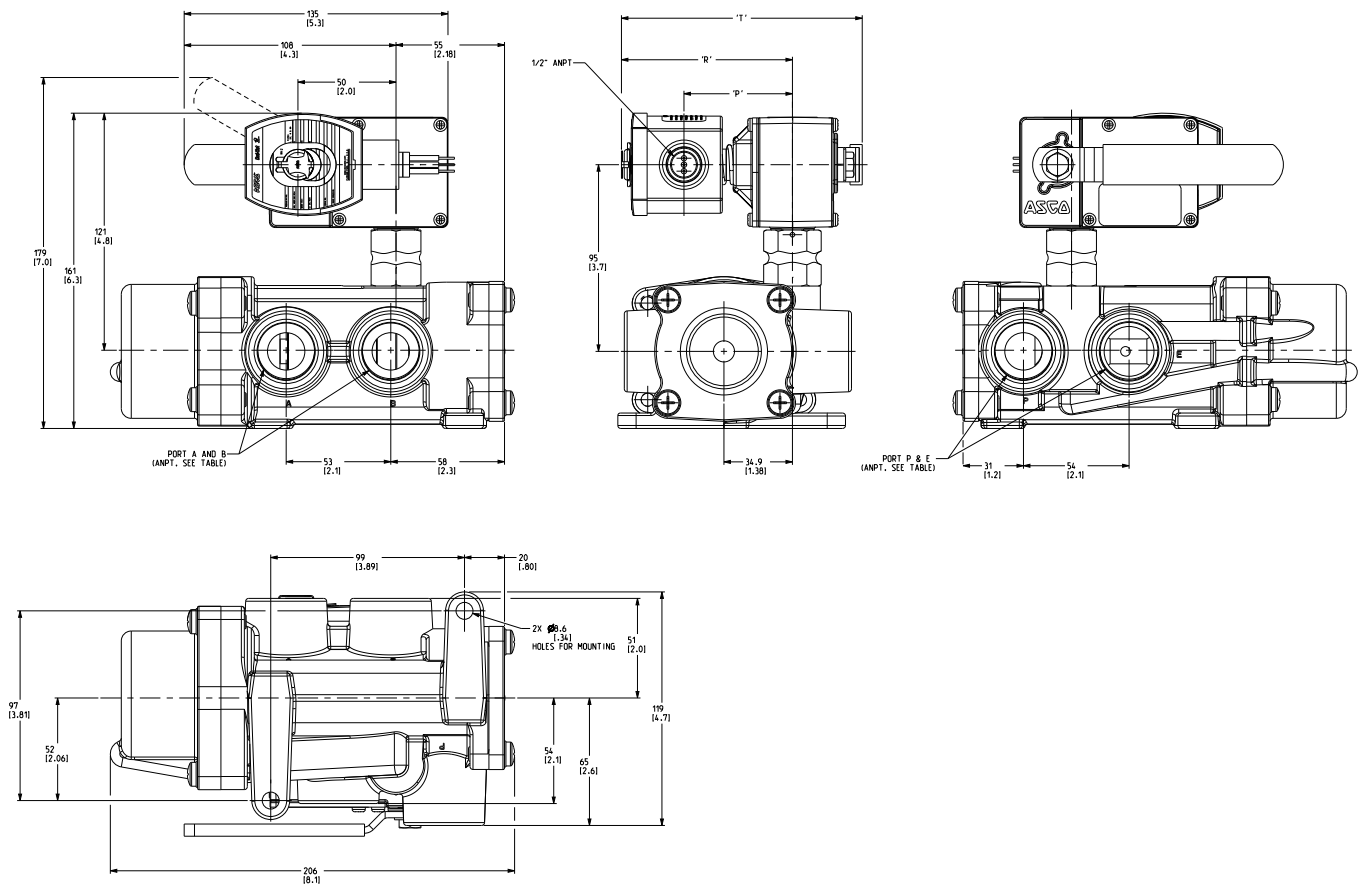
# ASCO™ Manual Reset Valves

Brass or Stainless Steel Bodies • 1/4" to 1" NPT • Universal Operation • Manual Reset

**3/2, 4/2  
Series**  
**8037/8308/8310**  
**8047/8408/8410**

## Dimensions: mm (inches)

Const. Ref. 10



ANPT	Orifice Size	Construction	Movement Construction	P	R	T	Catalog Number
1"	ø19 [3/4"]	4 Way	Electrically Tripped (TSO)	56	87	123	8410G010
3/4"				[2.20]	[3.43]	[4.83]	8410G009
1"			No Voltage Released (NVR)	55	87	123	8408G010
3/4"				[2.18]	[3.43]	[4.83]	8408G009

Availability, design and specifications are subject to change without notice.  
© 2025 Emerson Electric Co. All rights reserved.