

Supplement

Title: VR1710 User
Print Date: October 2007
Revision/Date:

Supplement Issue: **6**
Issue Date: 9/17
Page Count: 7

This supplement contains information necessary to ensure the accuracy of the above manual. This manual is distributed as an electronic manual on the following CD-ROM:

CD Title:	VR1710
CD Rev. & Date:	3, 5/13
CD PN:	3038781

Change #1, 43993

On page 9, under ***Electrical Specifications***,

Change:

Harmonic amplitude uncertainty	± 0.1 % relative to fundamental RMS value
--------------------------------	---

To:

Harmonic amplitude uncertainty	± 0.2 % relative to fundamental RMS value
--------------------------------	---

Change #2

On page 5, under ***Using the Recorder***,

Change: *Loading the USB Driver*

To: *USB Driver Software Installation*

Delete: To load the VR1710 USB driver:

Delete: 4. Restart the PC to conclude driver installation.

On page 6, under ***Connecting the Recorder for the First Time***, after the second step 2, add:

3. When the New Hardware Wizard appears again, follow the procedure above to complete USB driver software installation.

Change #3, 500

On page 7, replace step 3 and Figure 3 with:

3. Click on  (VR1710 Settings).

From the Settings screen, you can specify the following:

- Recording interval from 1 second to 20 minutes. To change the interval setting, recorded data must first be erased.
- Dip and Swell thresholds from 0 V to 300 V.
- Circular memory on or off. Circular memory on will continuously record, writing over old data when memory is full. Circular memory off will stop recording when memory is full.
- Disable transients (will not record detected transients).

- Transient sensitivity from 2 V to 20 V. To detect transients, a typical waveform is first determined through sampling. This waveform changes over time as the input waveform changes. An envelope around the typical waveform is created based on the sensitivity setting. If any point of a sample waveform falls outside of the envelope, the waveform is recorded as a transient.
- Short-term Flicker/THD Intervals are now adjustable. Settings other than 10 min are not standard and should only be used in special cases.

Note

VR1710 firmware version 1.15 or higher is required for circular memory and transient settings.

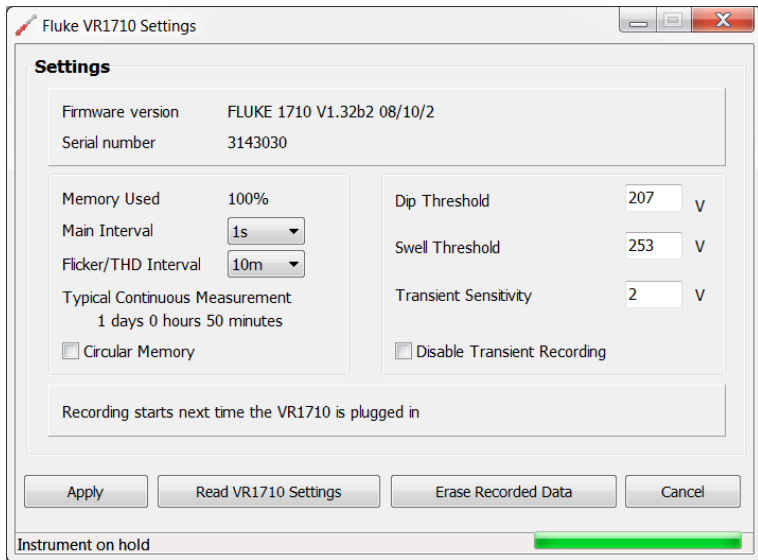


Figure 3. Settings

Change #4, 57565

On page 9 under ***Electrical Specifications***,

Change:

RMS voltage measurement range	70 V to 300 V
-------------------------------	---------------

To:

RMS voltage measurement range	70 V to 270 V continuous, 270 V to 300 V <50 ms transient.
-------------------------------	--

On page 10 under ***General Specifications***,

Change:


Power requirements	70 V to 300 V
--------------------	---------------

To:

Power requirements	70 V to 270 V
--------------------	---------------

Change #5, 66208

On page 3, add the following to the **Symbols** Table:

	Conforms to relevant South Korean EMC Standards.
---	--

On page 10, remove the **IP Rating**, **Vibration requirements**, **Drop test requirements**, **Measurement category rating**, **Safety**, and **EMC** from the ***Environmental and Safety Specifications***. Replace with:

Safety	IEC 61010-1: Overvoltage Category II, Measurement 300 V CAT II, Pollution Degree 2
IP Rating	IEC 60529: IP40
Electromagnetic Environment	IEC 61326-1: Portable
Electromagnetic Compatibility	Applies to use in Korea only. Class A Equipment (Industrial Broadcasting & Communication Equipment) ^[1]

- [1] This product meets requirements for industrial (Class A) electromagnetic wave equipment and the seller or user should take notice of it. This equipment is intended for use in business environments and is not to be used in homes.