

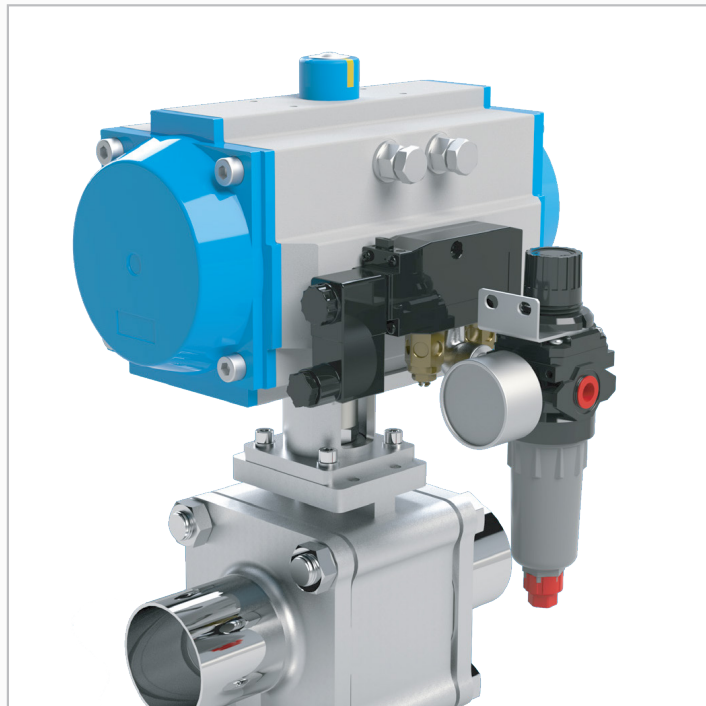
SINGLE SOURCE RESPONSIBILITY FOR VALVE AUTOMATION



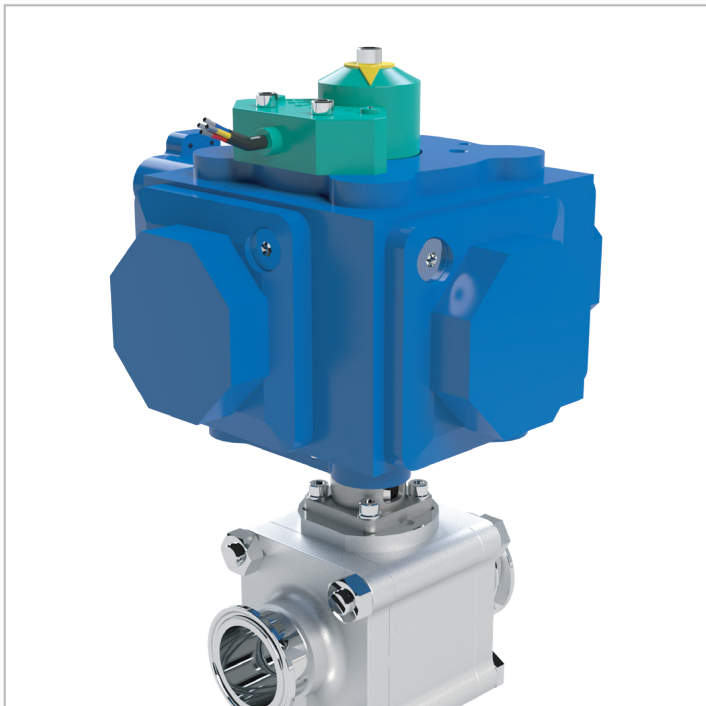
V-Positioner with SVF Rack & Pinion Actuator on Series 8 Ball Valve



NEXUS-LX with SVF Rack & Pinion Actuator and Pilot Valve on Series 8 Ball Valve



SVF Rack & Pinion Actuator with Filter Regulator and Pilot Valve on SB7 Hygienic Valve



NEXUS-PS with Quad4 Actuator on SB7 Hygienic Valve

Single Source Responsibility for Valve Automation

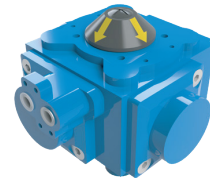
SVF Pneumatic Actuators



SVF
Rack & Pinion
Actuator



ASD
Spring
Diaphragm
Actuator



Quad4
4-Piston
Pneumatic
Actuator

SVF Electric Actuators



EM-SERIES
Electric Actuator



E-SERIES
Electric Actuator



ESR-SERIES
Electric Spring
Return Actuator

SVF controls



NEXUS-LP/LPX/ID
Discrete Valve Controller



NEXUS-PS
Low Profile Sensor



NEXUS-LX
NEMA 7 Limit Switch



NEXUS-LS
NEMA 4 Limit Switch

SVF Positioners



EXACT-XL
Electro-Pneumatic Positioner



EXACT-DH
Hart Positioner

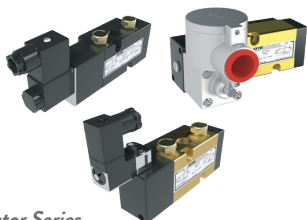


EXACT-P3
Pneumatic Positioner



EXACT-V-POSITIONER
Pneumatic / Electro-Pneumatic Positioner

SVF Automation Accessories



Vector Series
Pilot / Solenoid Valves



Filter Regulator
Automation Accessory



Stem Extension
Valve Option / Accessory



DMO
Declutchable Manual Override