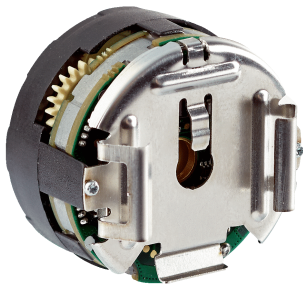


## SEK/SEL34

Compact motor feedback system for motors with 40 mm square

MOTOR FEEDBACK SYSTEMS ROTARY HIPERFACE®

**SICK**  
Sensor Intelligence.



### Technical data overview

<b>Type</b>	For integration
<b>Model</b>	Absolute Singleturn / Absolute Multiturn (depending on type)
<b>Communication interface</b>	HIPERFACE®
<b>Sine/cosine periods per revolution</b>	16
<b>Mechanical interface</b>	Tapered shaft
<b>Connection type</b>	Male connector, 8-pin, radial
<b>Available memory area</b>	1,792 Byte E <sup>2</sup> PROM 2048
<b>Measurement principle</b>	Capacitive

### Product description

The new SEK/SEL34 motor feedback systems with the holistic scanning process were developed specially for the requirements of motors with a 40 mm edge dimension. The SEL34 impresses with its compact size including real multiturn with a mechanical transmission. The centerpiece of the product family is a bearing-free, capacitive sensor element. The holistic scanning process virtually offsets eccentricity errors and is extremely rugged. Possible sources of error are nearly completely ruled out as there are no wear and tear parts. Thanks to the capacitive measurement system, balls bearings are not needed, meaning wear and heat development can be significantly reduced. The SEK/SEL34 motor feedback systems unite extreme reliability, multiturn capability and all the advantages of the HIPERFACE® interface in a very compact design.

### At a glance

- Motor feedback system for the basic power range
- Special design for motors with a 40 mm edge dimension
- 16 sine/cosine periods per revolution
- Absolute position with a resolution of 512 increments per revolution and 4096 revolutions with the multiturn system
- Programming of the position value
- Electronic type label
- HIPERFACE® interface
- RoHS-compliant

### Your benefits

- The small dimension allows manufacturers of low-power and minimalpower motors to considerably reduce the size of their motors
- The SEK/SEL34 motor feedback systems are excellently suited for use under rough environmental conditions
- The capacitive principle of measurement with holistic scanning allows for high axial and radial tolerances

### Ordering information

Other models and accessories → [www.sick.com/SEK\\_SEL34](http://www.sick.com/SEK_SEL34)

- **Communication interface:** HIPERFACE®
- **Type:** for integration
- **Sine/cosine periods per revolution:** 16
- **Mechanical interface:** tapered shaft
- **Connection type:** male connector, 8-pin, radial

Model	Type	Part no.
Absolute Multiturn	SEL34-HFB0K02	1053403
Absolute Singleturn	SEK34-HFB0K02	1053402

## SICK AT A GLANCE

SICK is one of the leading manufacturers of intelligent sensors and sensor solutions for industrial applications. A unique range of products and services creates the perfect basis for controlling processes securely and efficiently, protecting individuals from accidents and preventing damage to the environment.

We have extensive experience in a wide range of industries and understand their processes and requirements. With intelligent sensors, we can deliver exactly what our customers need. In application centers in Europe, Asia and North America, system solutions are tested and optimized in accordance with customer specifications. All this makes us a reliable supplier and development partner.

Comprehensive services complete our offering: SICK LifeTime Services provide support throughout the machine life cycle and ensure safety and productivity.

For us, that is “Sensor Intelligence.”

## WORLDWIDE PRESENCE:

Contacts and other locations –[www.sick.com](http://www.sick.com)