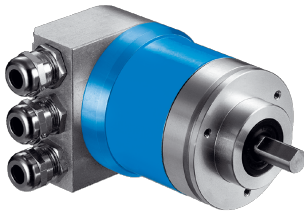


ATM60

Reliable, established and modular

ABSOLUTE ENCODERS

SICK
Sensor Intelligence.



Technical data overview

Encoder design	Multiturn
Shaft type	Solid shaft, Servo flange Solid shaft, face mount flange Blind hollow shaft (depending on type)
Shaft diameter	Solid shaft, Servo flange 6 mm Solid shaft, face mount flange 10 mm Blind hollow shaft 15 mm ¹⁾
Connection type	Male connector, M23, 12-pin, radial Cable, 12-wire, radial Connection adapter for CANopen Connection adapter for PROFIBUS Connection adapter for DeviceNet (depending on type)
Communication interface	SSI CANopen PROFIBUS DP DeviceNet™ (depending on type) (depending on type)
Communication Interface detail	DPV0
Number of steps per revolution (max. resolution)	
Max. resolution (number of steps per revolution x number of revolutions)	SSI, programmable 12 bit x 12 bit (4,096 x 4,096) CANopen, programmable 13 bit x 13 bit (8,192 x 8,192) PROFIBUS DP, DPV0, programmable 13 bit x 13 bit (8,192 x 8,192) DeviceNet™, programmable 13 bit x 13 bit (8,192 x 8,192)
Programmable/configurable	Over handheld programming tool Over PLC-Engineering-Tool (depending on type) (depending on type)

¹⁾ Collets for 6, 8, 10, 12, 14 mm and 1/4", 3/8" and 1/2" as accessories, separate order item. For 15 mm shaft diameter collet is not needed.

Product description

The ATM60 absolute multiturn encoder from SICK reliably delivers position information with a resolution of up to 26 bits, even under harsh ambient conditions. This product family proven in the field is based on a magnetic measurement principle. The 13 bit singleturn area is scanned by a sensor by means of permanent magnetic elements. The 13 bit multiturn area consists of a magnetic reduction gear. Equipped with the zero set pushbutton, the encoder can be conveniently set to zero or a user-programmed value on site. With magnetic scanning, its rugged housing in accordance with enclosure rating IP67 and high shock and vibration resistance, the ATM60 SSI is ideal for use under harsh condition.

At a glance

- Extremely rugged multiturn absolute encoder with up to 26 bits
- Solid shaft with face mount or servo flange, blind hollow shaft, adapter accessories
- Zero-set and preset functions via hardware/software
- Communication interface: SSI, DeviceNet, PROFIBUS DP or CANopen
- Electronically adjustable, configurable resolution
- Magnetic scanning

Your benefits

- Reduction in variants due to one encoder for all resolutions, single- and multiturn freely programmable
- Variable thanks to various electrical connection options
- Maintenance-free encoder, long service life
- A base model with flexible application possibilities thanks to the easily exchangeable collets for the blind hollow shaft
- Fast commissioning thanks to zero-set/preset function at the touch of a button on the device or with software
- Reliable applications thanks to high permissible shock and vibration values
- Worldwide availability and service

Fields of application

Measurement of absolute position in various machines and systems such as wind power and solar plants, material handling equipment, textile machines, packaging plants, rollers, port facilities, printing machines

Ordering information

Other models and accessories → www.sick.com/ATM60

- **Mechanical design:** Solid shaft, Servo flange
- **Singleturn or multiturn version:** Multiturn
- **Mechanical design:** Solid shaft Servo flange 6 mm x 10 mm
- **Programmable/configurable:** ✓

Connection type	Type	Part no.
Cable, 12-wire, radial, 1.5 m	ATM60-A1K12x12	1030006
Cable, 12-wire, radial, 10 m	ATM60-A1N12x12	1032925
Cable, 12-wire, radial, 3 m	ATM60-A1L12x12	1030007
Cable, 12-wire, radial, 5 m	ATM60-A1M12x12	1030008
Connection adapter for CANopen ¹⁾	ATM60-C1H13x13	1030025
Connection adapter for DeviceNet ¹⁾	ATM60-D1H13x13	1030018
Connection adapter for PROFIBUS ¹⁾	ATM60-P1H13x13	1030014
Male connector, M23, 12-pin, radial	ATM60-A1A12x12	1030005

¹⁾ Please order the bus adaptor separately.

- **Mechanical design:** Solid shaft, face mount flange
- **Singleturn or multiturn version:** Multiturn
- **Mechanical design:** Solid shaft face mount flange 10 mm x 19 mm
- **Programmable/configurable:** ✓

Connection type	Type	Part no.
Cable, 12-wire, radial, 1.5 m	ATM60-A4K12x12	1030002
Cable, 12-wire, radial, 10 m	ATM60-A4N12x12	1032915
Cable, 12-wire, radial, 3 m	ATM60-A4L12x12	1030003
Cable, 12-wire, radial, 5 m	ATM60-A4M12x12	1030004
Connection adapter for CANopen ¹⁾	ATM60-C4H13x13	1030024
Connection adapter for DeviceNet ¹⁾	ATM60-D4H13x13	1030017
Connection adapter for PROFIBUS ¹⁾	ATM60-P4H13x13	1030013
Male connector, M23, 12-pin, radial	ATM60-A4A12x12	1030001

¹⁾ Please order the bus adaptor separately.

- **Mechanical design:** blind hollow shaft
- **Singleturn or multiturn version:** Multiturn
- **Mechanical design:** blind hollow shaft 15 mm (Collets for 6, 8, 10, 12, 14 mm and 1/4", 3/8" and 1/2" as accessories, separate order item. For 15 mm shaft diameter collet is not needed.)
- **Programmable/configurable:** ✓

Connection type	Type	Part no.
Cable, 12-wire, radial, 1.5 m	ATM60-AAK12x12	1030010
Cable, 12-wire, radial, 10 m	ATM60-AAN12x12	1033169
Cable, 12-wire, radial, 3 m	ATM60-AAL12x12	1030011

¹⁾ Please order the bus adaptor separately.

Connection type	Type	Part no.
Cable, 12-wire, radial, 5 m	ATM60-AAM12x12	1030012
Connection adapter for CANopen ¹⁾	ATM60-CAH13x13	1030026
Connection adapter for DeviceNet ¹⁾	ATM60-DAH13x13	1030019
Connection adapter for PROFIBUS ¹⁾	ATM60-PAH13X13	1030015
Male connector, M23, 12-pin, radial	ATM60-AAA12x12	1030009

¹⁾ Please order the bus adaptor separately.

SICK AT A GLANCE

SICK is one of the leading manufacturers of intelligent sensors and sensor solutions for industrial applications. A unique range of products and services creates the perfect basis for controlling processes securely and efficiently, protecting individuals from accidents and preventing damage to the environment.

We have extensive experience in a wide range of industries and understand their processes and requirements. With intelligent sensors, we can deliver exactly what our customers need. In application centers in Europe, Asia and North America, system solutions are tested and optimized in accordance with customer specifications. All this makes us a reliable supplier and development partner.

Comprehensive services complete our offering: SICK LifeTime Services provide support throughout the machine life cycle and ensure safety and productivity.

For us, that is “Sensor Intelligence.”

WORLDWIDE PRESENCE:

Contacts and other locations –www.sick.com