

## SANITARY VALVE SERIES

ISO 5211 Integral Mounting Pad allows for precise actuator mounting or secondary containment unit

Bottom entry 316 precision machined stem with live loaded stem seal, automatically adjusts with pressure and temperature fluctuations

Solid 316 stainless steel ball with "Tube-ID" feature maintains full flow rate, reduces pressure drops and is fully drainable

TFM1600™ seats and body seals feature non-slotted design eliminating entrapment areas, smoother surface reduces torque and particle generation and ideal for clean applications (TFM1600 cavity filler available).

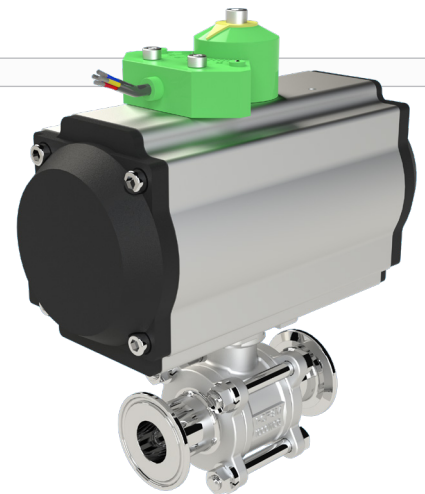
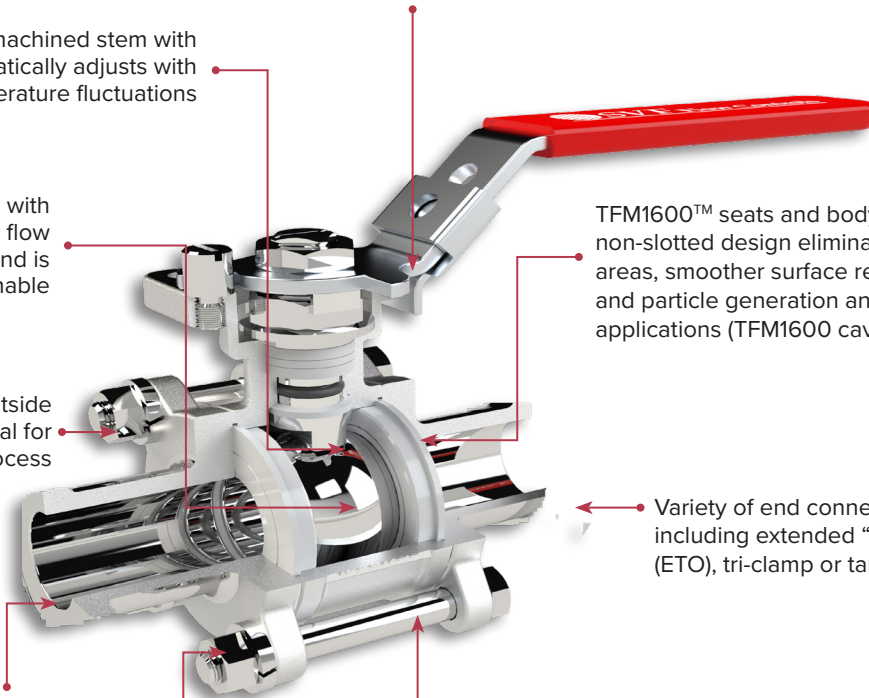
Stainless steel body bolts for outside environment and are ideal for washdown process

Variety of end connections available including extended "Tube-OD" (ETO), tri-clamp or tank pad ends

Interior standard finish of 20 Ra ensures cleanliness and low friction (Electro-polishing option available)

316 Stainless Steel center section allows easy access to internal valve components without disturbing alignment of tubing

Integral Bosses allows for purge ports to be added for CIP or SIP applications



*CleanTECH™* ball valves are engineered to be a true process piping component to specifically meet the demanding processes found in the food and beverage and other industries.

The port opening of the valve's flow path is dimensionally identical to the adjacent tubing. This "Tube-ID" feature provides predictable flow rates and pressure drops and ensures thorough cleaning and full drainability.

As an ISO:9001-2015 certified company, we are committed to quality and continuous improvement in all that we do. Only the finest and highest quality materials available from certified suppliers and manufacturers are used to produce *CleanTECH™* ball valves.

We recommend *CleanTECH™* ball valves to help you meet the critical demands of an ASME-BPE compliant, high purity system.

## SANITARY VALVE SERIES



**SERIES SB9**  
 Hygienic Ball Valve  
 Cast  
 Sizes from 1/2" to 6"  
*Available with Stainless Steel  
 or Hastelloy Materials*

Custom Automated  
 Valves Available!

Visit [www.SVF.net](http://www.SVF.net)



**SERIES SB9B**  
 Hygienic Ball Valve  
 Forged  
 Sizes from 1/2" to 4"



**SERIES SMC9**  
 Hygienic Multi-Port Ball Valve  
 Sizes from 1/2" to 4"  
*Available as T-Port or L-Port*

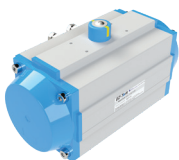


**SERIES TSB7**  
 Hygienic Multi-Port Ball Valve  
 Cast or Forged  
 Sizes from 1/2" to 4"

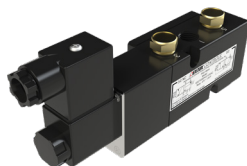


**SERIES OPUS™**  
 Hygienic Ball Valve  
 Cast  
 Sizes from 1/2" to 6"

## ACTUATORS AND CONTROLS



Rack and Pinion  
 Pneumatic Actuator



**VECTOR** Series  
 Pilot Valves



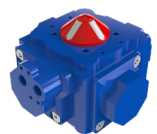
**E-Series**  
 Electric Actuator



**NEXUS-LP/LPX**  
 Discrete Valve Controller



**EXACTXL / P3**  
 Pneumatic / Electro-  
 Pneumatic Positioner



**Quad4**  
 Pneumatic Actuator