

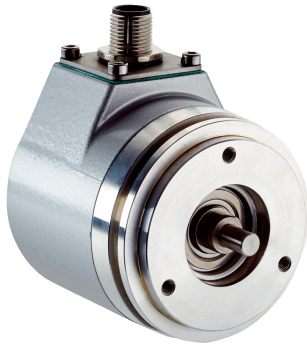


## ACM60

Compact, universal, intuitive

**ABSOLUTE ENCODERS**

**SICK**  
Sensor Intelligence.



### Technical data overview

<b>Encoder design</b>	Multiturn
<b>Shaft type</b>	Solid shaft, Servo flange
<b>Shaft diameter</b>	6 mm
<b>Connection type</b>	Male connector, M12, 5-pin, radial
<b>Communication interface</b>	Analog
<b>Communication Interface detail</b>	Current / Voltage (depending on type)
<b>Number of steps per revolution (max. resolution)</b>	
<b>Max. resolution (number of steps per revolution x number of revolutions)</b>	
	Analog, Current 10,485 X 64
	Analog, Voltage 13,107 X 64

### Product description

The ACM60 (multiturn) encoder family has an analog interface with a maximum overall resolution of up to 13107 steps. Using the teach-in function on the membrane keyboard, the measuring range can be intuitively programmed directly on the device with just a few clicks. A current signal of 4-20 mA or a voltage signal of 0-10 V is output depending on the device version.

### At a glance

- Compact 60 mm absolute encoder with up to 13107 steps
- Servo flange
- Radial connector connection
- Analog interface 4 to 20 mA or 0 to 10 V
- Programming via keypad on the encoder
- IP68 protection class
- Operating temperature: -30 °C to +80 °C

### Your benefits

- Intuitive configuration of the measuring range directly on the device using membrane keyboard (teach-in function) saves time and requires no special expertise.
- The compact size (including M12 connection technology) allows the encoder to be used in confined spaces and thus provides greater freedom for development and machine design.
- The analog interfaces (current/voltage) offer a low-cost solution for detecting the position and path, and thereby help to reduce overall system costs.

### Fields of application

Measurement of the absolute position in a variety of industries, machines and equipment, for example:

- Automatically guided vehicle systems (AGS)
- Industrial trucks
- Commercial vehicles
- Packaging machinery
- Logistics applications
- Mechanical engineering
- Medical technology

## Ordering information

Other models and accessories → [www.sick.com/ACM60](http://www.sick.com/ACM60)

- **Mechanical design:** Solid shaft, Servo flange
- **Singleturn or multiturn version:** Multiturn
- **Mechanical design:** Solid shaft Servo flange 6 mm x 10 mm
- **Connection type:** male connector, M12, 5-pin, radial

Type	Part no.
ACM60B-S1KE13x06	6045312
ACM60B-S1LE13x06	6045313

## SICK AT A GLANCE

SICK is one of the leading manufacturers of intelligent sensors and sensor solutions for industrial applications. A unique range of products and services creates the perfect basis for controlling processes securely and efficiently, protecting individuals from accidents and preventing damage to the environment.

We have extensive experience in a wide range of industries and understand their processes and requirements. With intelligent sensors, we can deliver exactly what our customers need. In application centers in Europe, Asia and North America, system solutions are tested and optimized in accordance with customer specifications. All this makes us a reliable supplier and development partner.

Comprehensive services complete our offering: SICK LifeTime Services provide support throughout the machine life cycle and ensure safety and productivity.

For us, that is “Sensor Intelligence.”

## WORLDWIDE PRESENCE:

Contacts and other locations –[www.sick.com](http://www.sick.com)