

## INSTALLATION, OPERATION & MAINTENANCE FOR SVF SERIES FS7 BALL VALVES



### GENERAL

SVF Ball valves have been designed and engineered to provide long lasting and trouble free service when used in accordance with the instructions and specifications herein.

The following instructions refer only to SVF Series FS7 Fire Safe Ball Valves.

Keep protective cover in place until moment of installation. Valve performance depends upon preventing of damage to ball surface. Upon removal of cover, make sure that the valve is completely open and free of obstruction.

If requested, valves can be shipped from the factory containing a silicon based lubricant which aids in the assembly of the valve. This may be removed with a solvent if found intolerable.

Certain ferrous valves are phosphate and oil dipped during the course of manufacture, but they are completely non-toxic and the valves are quite safe to use for edible or potable products.

### STORAGE:

All manual valves are shipped in the fully open position with protective end caps (covers). Keep all protective packaging, flange covers, or end caps attached to the valves during storage. To avoid damage to the seat due to contact with the balls edge, leave the valve in the fully open or closed position during storage. It is recommended to keep the valves in a clean and dry environment until ready for use.

### !!!CAUTION! Safety Precautions!!!

Before removing valve from pipeline NOTE that:

Media flowing through a valve may be corrosive, toxic, flammable, a contaminant or harmful in nature. Where there is evidence of harmful fluids having flowed through the valve, the utmost care must be taken. It is suggested that the following minimal safety precautions be taken when handling valves:

1. Always wear eye shields.
2. Always wear gloves and overalls.
3. Wear protective footwear.
4. Wear protective headgear.
5. Ensure that running water is readily accessible.
6. Have a suitable fire extinguisher ready if media is flammable.
7. Be sure that you are aware of the fluid that has been passing through the valve before opening or dismantling any valve. Require MSDS information.

By checking line gauges ensure that no pressure is present at the valve.

Ensure that any media is released by operating valve slowly to half open position. Ideally, the valve should be decontaminated when the ball is in the half open position.

These valves, when installed, have body connectors which form an integral part of the pipeline and the valve cannot be removed from the pipeline without being dismantled.

Valves and accessories must not be used as a sole support of piping or human weight. Safety accessories such as safety relief (overpressure) valves are the responsibility of the system designer.

It is the user/system designer's responsibility to use insulation in high temperature applications. Refer to OSHA documents for more details.

*What do you need today?*<sup>™</sup>

HIGH PURITY  
**CleanFLOW**

**PRO-SPEC**  
PROCESS SPECIFIC  
WWW.PRO-SPEC.NET

**QUALITY FLOWS  
THROUGH US**

Please visit [www.SVF.net](http://www.SVF.net) for the latest updates on this document. All data posted on our website supersedes all prior publications • [Document # SVF\_FS7\_IOM • 10/21/2013]

[www.SVF.net](http://www.SVF.net)

© SVF Flow Controls, Inc. • 13560 Larwin Circle • Santa Fe Springs, CA 90670 • Tel: 1.800.783.7836 • FAX: 562.802.3114  
Sales@SVF.net • Engineering@SVF.net • Visit our website: [www.SVF.net](http://www.SVF.net) • Specifications subject to change without notice

### INSTALLATION, OPERATION & MAINTENANCE FOR SVF SERIES FS7 BALL VALVES

#### INSTALLATION

The valve may be installed for flow or vacuum in either direction. Carefully exclude pipe sealants from the valve cavity. When installing, use standard gaskets suitable for the specific service. Tighten flange bolts or studs evenly.

#### OPERATION

SVF valves provide tight shut off when used under normal conditions and in accordance with SVF's published pressure/temperature chart. If these valves are used in a partially open (throttled) position seat life may be reduced.

SVF valves have ¼ turn operation closing in a clockwise direction. It is possible to see when the valve is open or closed by the position of the wrench handle. When the wrench is in line with the pipeline, the valve is open.

Any media which might solidify, crystallize or polymerize should not be allowed to stand in the ball valve cavities unless regular maintenance is provided. If minimal maintenance is required, SVF offers steam jacketed ball valves.

#### TORQUE REQUIREMENTS

Torque ratings are subject to variations depending on the length of time between cycles and the media in the system.

Breakaway torque is that force which must be exerted to cause the ball to begin to open. Operating torque requirements will vary depending on the length of time between cycles, media in the system, line pressure and type of valve seat.

#### MAINTENANCE

With self-wiping ball/seats, SVF valves have a long, trouble free life, and maintenance is seldom required. But, when necessary, valves may be refurbished, using a small number of components, none of which require machining.

SVF valves are designed for easy service and assembly in the field. The following checks will help to extend valve life, or reduce plant problems.

SVF ball valves utilize live-loaded stem seals featuring Belleville washers (disk springs) that maintain constant pressure on the Stem Seal area even under a wide range of pressure and temperature fluctuations. If stem leakage is evident proceed as follows:

#### STEM LEAKAGE

Examine the disk springs (Belleville washers) for damage. If in good condition tighten the gland nut until disk springs are firmly compressed, then back nut off 1/16<sup>th</sup> of a turn. If damaged, dismantle the stem down to the gland, fit new disk springs with their outer edges touching, replace and retighten using gland nut. Further maintenance necessitates dismantling of the valve.

#### LEAKAGE AT BODY JOINT

Check for tightness at the body connector bolts. If loose, tighten body bolts. Excessive force will damage the bolts. (See Table A below) If there is still leakage it will be necessary to dismantle the valve and replace the body seals.

#### IN-LINE LEAKAGE

Check that the valve is fully closed. If leakage occurs while the valve is in the closed position, a seat or ball sealant surface may be damaged and it will be necessary to disassemble the valve.

NOTE: If Stem leakage and leakage at body joint are not cured by the simple means described above, it will be necessary to dismantle the valve. If there is no stem leakage the stem assembly should not be touched.

### INSTALLATION, OPERATION & MAINTENANCE FOR SVF SERIES FS7 BALL VALVES

#### REBUILDING

Before rebuilding, check that all the correct components are available and that they are fit for reassembly. When rebuilding, cleanliness is essential to allow long valve life and provide cost effective maintenance.

#### PRECAUTIONARY RECOMMENDATIONS:

- No Body or Stem Seals are Reusable and Must Be Replaced!!
- Care must be taken to avoid scratching the seats and seals during installation.
- Do not use high speed impact wrenches when assembling or disassembling fasteners.
- All fasteners (body bolts, nut, stems, etc) must be inspected prior installation making sure all the threaded areas are clean of any debris.
- It is recommended to use an anti-seize lubricant on bolt threading.
- Failure to follow these recommendations may cause damage to the components and/or cause galling of the fasteners.

NOTE: Caution must be taken with valves that have been in hazardous media. They must be decontaminated before disassembly by relieving the line pressure and flushing the line with the valve in the partially open position. Protective clothing, face shields, gloves, etc., MUST BE USED for this operation.

#### A DISASSEMBLY OF VALVE (Removed from line)

- 1.) Turn the valve to the OPEN position.
- 2.) Loosen the body bolts (#16) diagonally in accordance with the cross pattern procedure shown on page # 4.
- 3.) After loosening all Body Bolts (#16), they can be removed along with the End Connectors (#2).
- 4.) Remove the Seats (#5), Body Seals (#6), and Retainer (#17).
- 5.) Make sure the Ball is in the closed position, thus the Ball (#3) can be removed easily from the Body (#1).

#### B. REMOVING STEM ASSEMBLY

- 1.) Remove the Pipe Handle (#15) by removing the Pipe Handle Bolt (#14).
- 2.) Remove the Pipe Handle Adapter (#13), and Tab-Lock (#12).
- 3.) Remove the Stem Nut (#11) by holding the stem (#4) firmly.
- 4.) Remove the Belleville Washers (#9), Stop Plate (#10), Gland (#8), and Stem Seals (#7).
- 5.) Carefully push the Stem (#4) down into the body cavity to remove. Once removed, take off the Thrust Washer (#18).

#### C INSPECTION

- 1.) The ball and the surfaces of the seats should be free of pit marks and scratches. Light marring from the action of the ball against the seats is normal and will not affect the operation of the valve.
- 2.) The stem and body surfaces, which the thrust washer and Stem Seals make contact with, should be free of pit marks and scratches.

#### D REASSEMBLY OF STEM

- 1.) Apply an adequate amount of lubricant compatible with the media being handled around Stem (#4), and Thrust Washer (#18).
- 2.) Place the NEW Thrust Washer (#18) on the Stem (#4) and push the Stem up through the body cavity and into the stem housing.
- 3.) After the Stem has been inserted through the cavity, hold the bottom of the stem to prevent it from slipping out.
- 4.) Install the NEW Stem Seals (#7), Gland (#8), Stop Pins (#19), Stop Plate (#10), Belleville Washers (#9) and Stem Nut (#11).
- 5.) When the stem assembly is complete, firmly secure the Stem (# 4) and tighten the Stem Nut (#11) according to the values shown in Table A, Page 4.

#### E REASSEMBLY OF VALVE

- 1.) Apply an adequate amount of lubricant compatible with the media being handled around the Ball (#3), Seats (#5), and Body Seals (#6).
- 2.) Turn the Stem (#4) to the CLOSED position ("V" pointer of stop plate to be perpendicular to the open cavity of body) in order to insert the Ball (#3) into the Body (#1) so that the stem slot of the ball engages with the tang at the base of the stem.
- 3.) Turn ball to the OPEN position.
- 4.) Place the Body Seals (#6) on the Body (#1) and make sure they rest squarely on the center seal surface of the Body (#1).
- 5.) Insert the Seats (#5) into the Retainers (# 17) and place them into the Body (#1). Note: Make sure each Seat/ Retainer set rests firmly on back surface of each Body (#1) recess.
- 6.) Merge the End Connectors (#2) with the Body (#1).
- 7.) Insert and finger tighten the Body Bolts (#16) before applying the torque wrench.
- 8.) Tighten the Body Bolts (#16) diagonally, in accordance to the cross pattern procedure shown on page # 4.
- 9.) In the final assembly step ensure that the Body Bolts (#16) are tightened to torque values according to Table A, Page 4.

## INSTALLATION, OPERATION & MAINTENANCE FOR SVF SERIES FS7 BALL VALVES

### TORQUE SPECS

Certain precautions need to be followed when tightening bolts down to their corresponding torques to help prevent bolt galling. There are two passes each bolt has to undergo during the process, first pass and the final pass. Once every bolt has met the first pass requirement, the final pass can be initiated. When tightening down bolts it is necessary to follow the corresponding bolt pattern shown below.

### REPAIR KITS

Repair Kits are available from SVF Flow Controls, Inc. Table B below shows what the kits consist of. When ordering a Repair Kit, please be sure to specify the type, size and seating material of the valve.

When repairing a valve use only SVF Flow Controls, Inc. authorized spare parts including; bolts and nuts, etc. In addition to maintenance kits, spare parts are available from SVF Flow Controls, Inc. They are: balls, stems and glands. If additional parts are required (body and ends) it is normally recommended that the complete valve be replaced.

Components from a different valve series should not be used with the repair of any other valve. If the valve is altered in any way, no liability can be accepted by SVF Flow Controls, Inc.

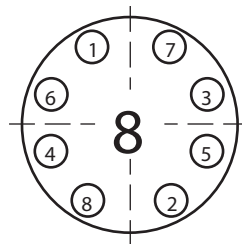
**TABLE A: TORQUE REQUIREMENTS (in-lbs)**

FS7 Valve Size	Bolt Pattern	Body Bolts		Stem Nuts
		First Pass	Final Pass	
3"	8	177	354	620
4"	8	180	550	620

**TABLE B: GENERAL REPAIR KIT**

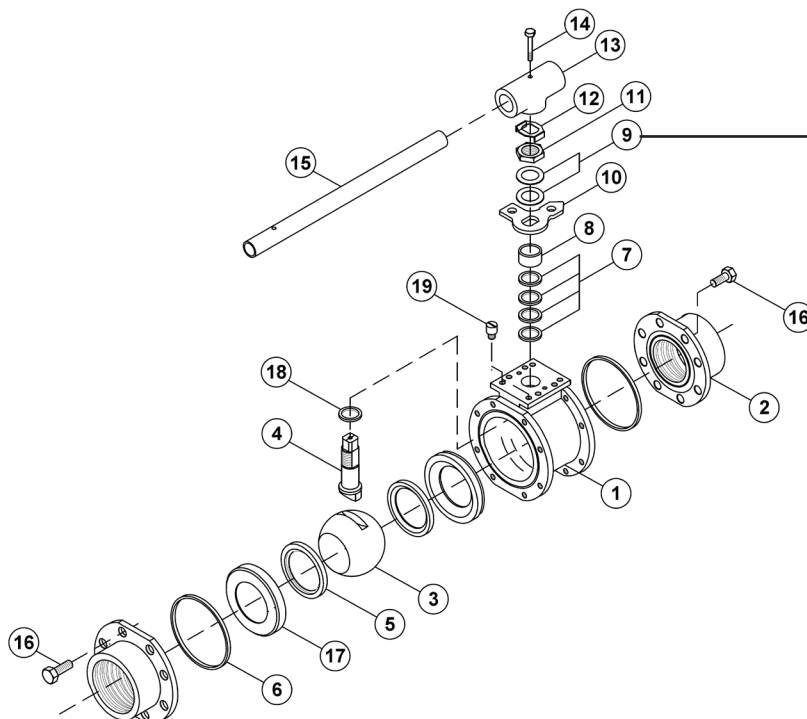
Part	Quantity
Thrust Washers	1
Stem Seals	4
Belleville Washers	2
Seats	2
Body Seals	2

## FS7 SERIES BOLT PATTERN - BOLT TIGHTENING SEQUENCE



**TABLE C: MATERIALS OF CONSTRUCTION FOR SVF SERIES FS7 BALL VALVES**

Item #	Part Name	Materials	Recommended Spare	Wetted
1	Body	316 Stainless Steel ASTM A351-CF8M, Carbon Steel ASTM A216 WCB	-	X
2	End Connector	316 Stainless Steel ASTM A351-CF3M, Carbon Steel ASTM A216 WCB	-	X
3	Ball	316 Stainless Steel ASTM A351-CF8M	-	X
4	Stem	316L Stainless Steel ASTM A276	-	X
5	Seat	TFM1600™	X	X
6	Body Seal	GRAFOIL®, PTFE	X	X
7	Stem Seal	TFM1600™, GRAFOIL®, SupraLon™	X	X
8	Gland	304 Stainless Steel	-	-
9	Belleville Washers	Stainless Steel	X	-
10	Stop Plate	Stainless Steel	-	-
11	Stem Nut	Stainless Steel	-	-
12	Tab Lock	Stainless Steel	-	-
13	Pipe Handle Adapter	Stainless Steel	-	-
14	Pipe Handle Bolt	Stainless Steel	-	-
15	Pipe Handle	Stainless Steel	-	-
16	Body Bolt	Stainless Steel	-	-
17	Retainer	316 Stainless Steel	-	-
18	Thrust Washer	SupraLon™	X	X
19	Stop Pin	Stainless Steel	-	-



NOTE: The Belleville washers are to be installed in alternating directions. The bottom Belleville washer is concave up while the top Belleville is concave down.