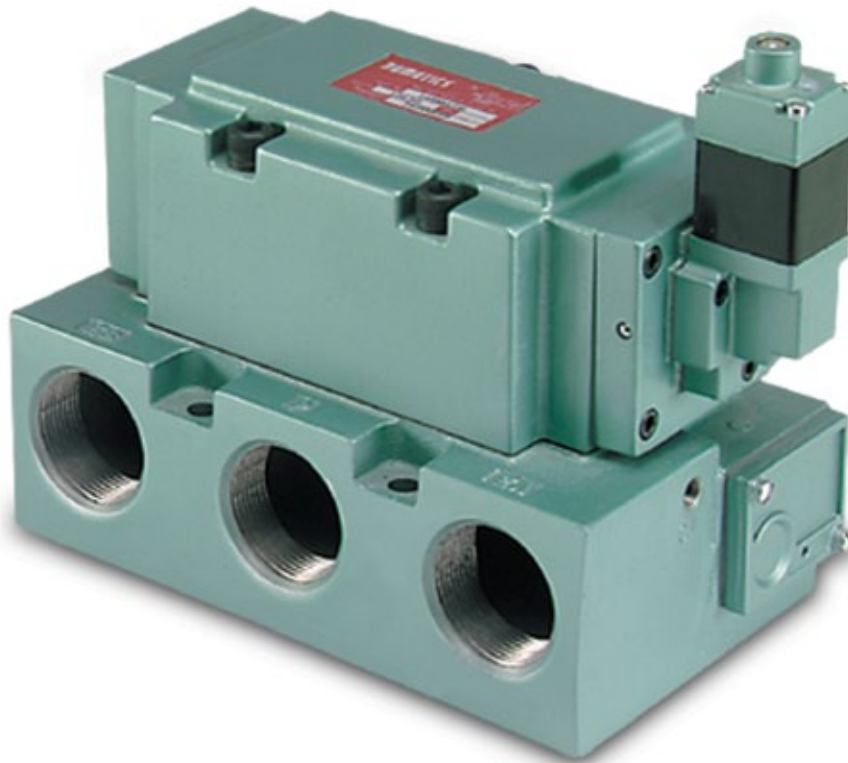


# NUMATICS®

## 140 Series

High Flow, Solenoid Pilot or Pilot Actuated Valves



[www.numatics.com](http://www.numatics.com)

## 140 Series

Technical and Operating Data	3
How to Order	4
Valve on Individual Base	5
Plugging Arrangements	6
Base Assembly Kits	6
Service Kits and Parts	6
Solenoid Capsule Assemblies	6

5 Ported, 2 position, 4-way, Spool & Sleeve

Cv: 14.5 - 16.5

- Solenoid pilot or air pilot actuated
- Plug-in solenoid with indicator light
- Unlubricated or lubricated service
- Base with side and bottom ports and individual exhaust
- NEMA4 / IP65

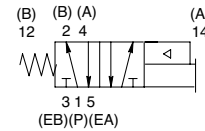


## Technical Data

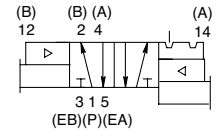
Valve Data	1 NPTF	1-1/4 NPTF	1-1/2 NPTF
Cv	14.5	16.0	16.5
Flow Capacity	671.5 SCFM	741 SCFM Upstream pressure to atmosphere @80 PSIG	764 SCFM
Pilot Pressure Range: Models 140BA4 and 140PA4	20 to 125 PSIG	20 to 125 PSIG	20 to 125 PSIG
Pilot Pressure Range: Models 140BB4 and 140PP4	15 to 125 PSIG	15 to 125 PSIG	15 to 125 PSIG
Operating Pressure Range	28" HG. Vacuum to 150 PSIG	28" HG. Vacuum to 150 PSIG	28" HG. Vacuum to 150 PSIG
Temperature Range (Ambient)	-10°F to +115°F	-10°F to +115°F	-10°F to +115°F



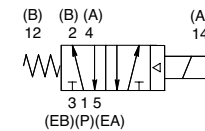
PA single air pilot  
2 position 4-way



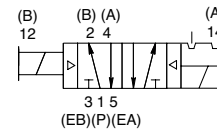
PP double air pilot  
2 position 4-way



SPA single solenoid air pilot  
2 position 4-way



SPA double solenoid air pilot  
2 position 4-way

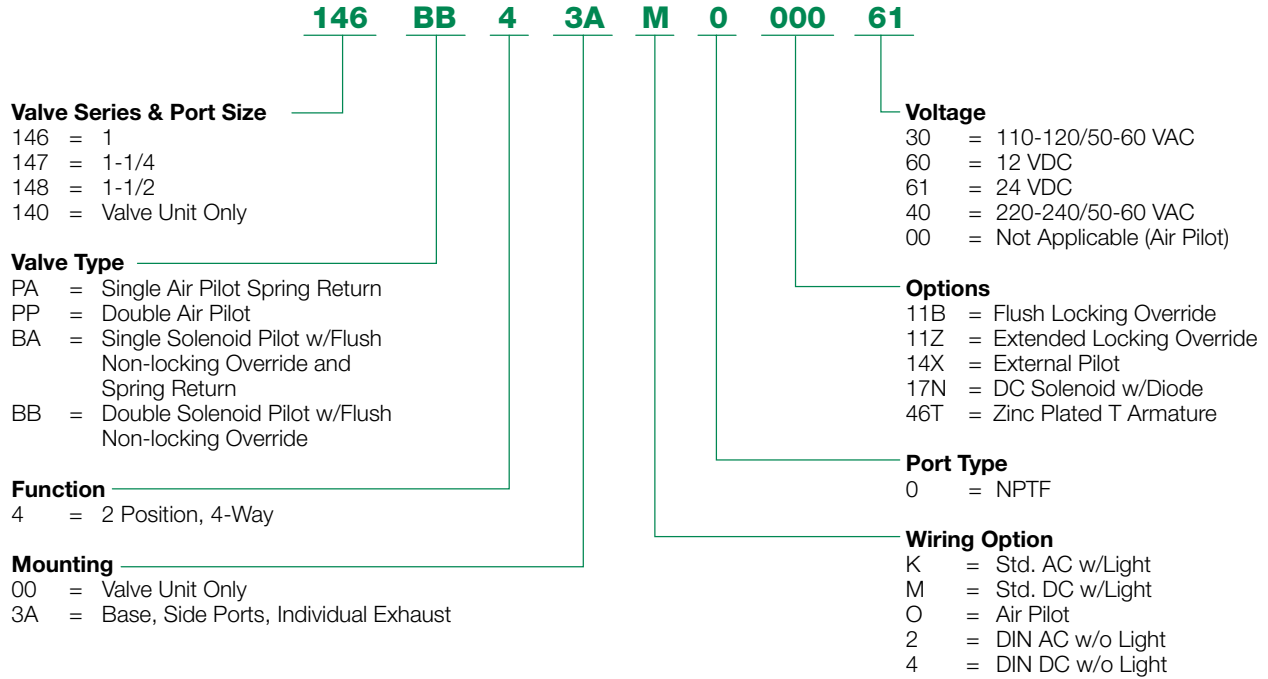


## Operating Data: Solenoid-Pilot

Standard Voltages	Inrush Current (amps)	Holding Current (amps)	DC Power (Watts)	Energize in Seconds 2-Position 140 Solenoid-Pilot Valves	De-Energize in Seconds 2-Position 140 Solenoid-Pilot Valves
120/60 AC	0.40	0.09	N/A	0.012	0.012
12 VDC	0.50	0.50	6.0 W	0.038	0.012
24 VDC	0.25	0.25	6.0 W	0.038	0.012

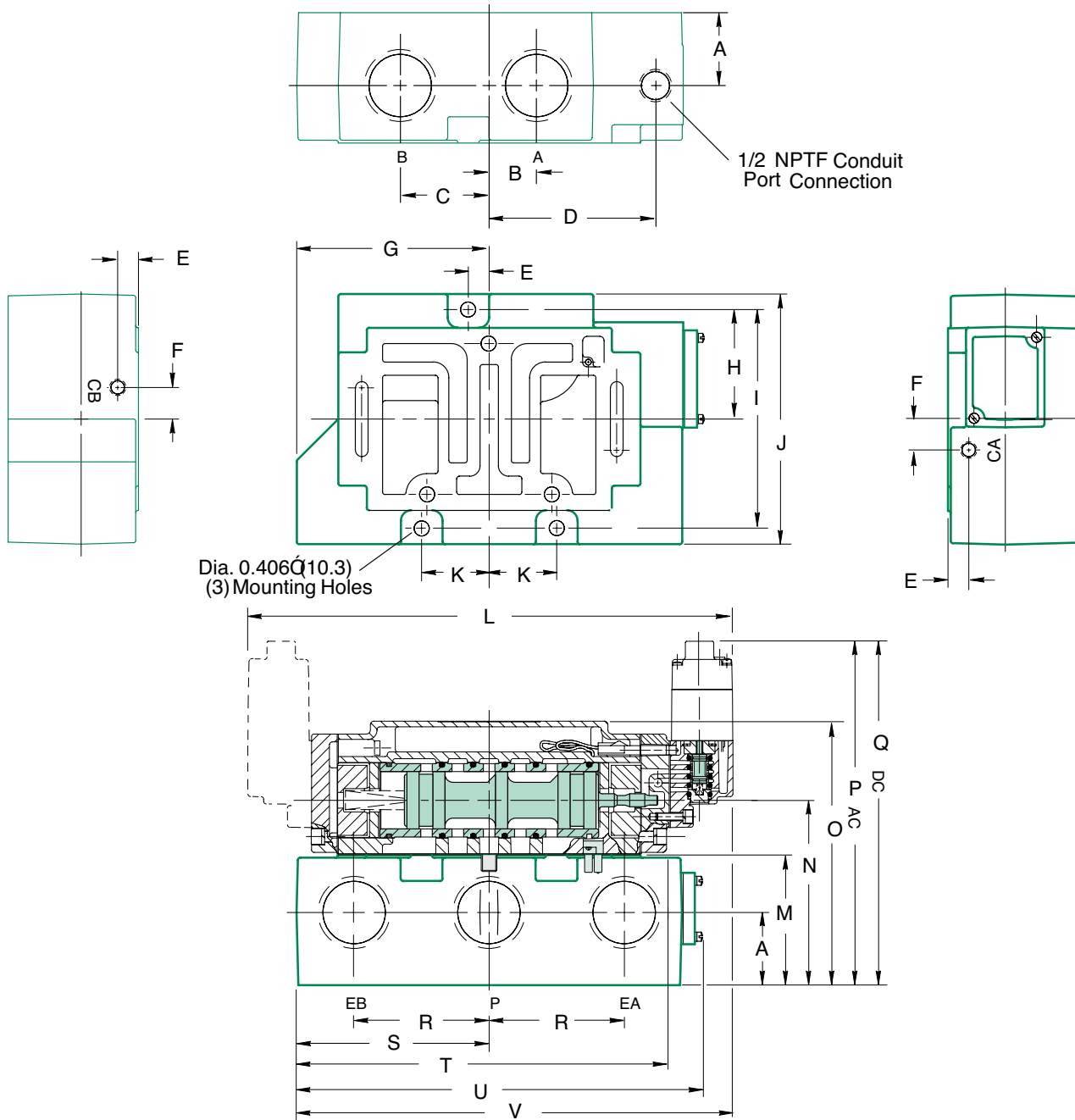
**How to Order**

**Valves**



**Dimensions: Inches (mm)**

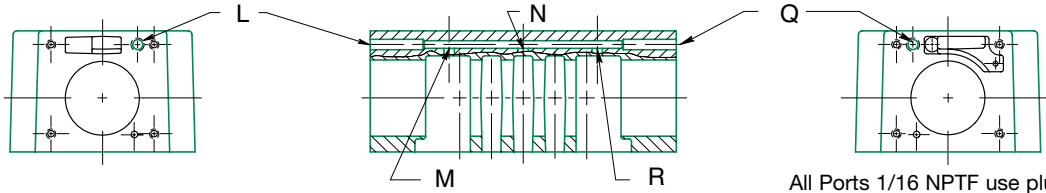
**Valve on Individual Base**



A	B	C	D	E	F	G	H	I	J	K
1.75 (44.4)	1.13 (28.7)	2.13 (54.1)	4.00 (101.6)	0.50 (12.7)	0.75 (19.1)	4.26 (108.2)	2.62 (66.5)	5.25 (133.3)	6.00 (152.4)	1.62 (41.1)

L	M	N	O	P	Q	R	S	T	U	V
11.70 (297.0)	3.13 (79.5)	44.4 (112.8)	6.34 (161.0)	7.93 (201.4)	8.62 (218.9)	3.25 (82.6)	4.62 (117.3)	9.07 (203.4)	9.77 (248.2)	10.47 (266.0)

**Multi-Purpose Pilot Plugging Arrangements for Solenoid-Pilot**



All Ports 1/16 NPTF use plug #129-118.

Pilot Port	Internal Supply from Port P		External Supply from Port CB*		External Supply from Port CA*		Internal Supply from Port EB		Internal Supply from Port EA	
	BA4	BB4	BA4	BB4	BA4	BB4	BA4	BB4	BA4	BB4
L	Plug	Open	Open	Open	Plug	Open	Plug	Open	Plug	Open
M	Plug	Plug	Plug	Plug	Plug	Plug	Open	Open	Plug	Plug
N	Open	Open	Plug	Plug	Plug	Plug	Plug	Plug	Plug	Plug
Q	Open	Open	Open	Open	Open	Open	Open	Open	Open	Open
R	Plug	Plug	Plug	Plug	Plug	Plug	Plug	Plug	Open	Open

\*The standard base for internally piloted valves does not provide pilot ports. For external pilot supply and for all air piloted valves, use only bases with ports CA and CB tapped 1/8NPTF.

**Base Assembly Kits**

Base Description	NPTF		
	1	1-1/4	1-1/2
No Electrical Receptacle: w/Pilot Ports	203-626	203-627	203-628
With Electrical Receptacle: w/Pilot Ports	203-629	203-630	203-631
With Electrical Receptacle: No Pilot Ports	203-635	203-636	203-637

**Service Kits and Parts**

Description	Part No.
Pilot Section	SPA55-KP
Single Air-Pilot: Models 146PA4, 147PA4, 148PA4	PA140-K1
Double Air-Pilot: Models 146PP4, 147PP4, 148PP4	PA140-K2
Single Solenoid-Pilot: Models 146BA4, 147BA4, 148BA4	SPA140-K1
Double Solenoid-Pilot: Models 146BB4, 147BB4, 148BB4	SPA140-K2

(Includes all internal parts except spool, sleeve and solenoid.)

**Solenoid Capsule Assemblies**

Voltages	120/50-60	230/50-60	12 VDC	24 VDC
Part No.	237-614	237-615	226-754	226-755



World Class Supplier of Pneumatic Components



## World Headquarters

### **USA Numatics, Incorporated**

46280 Dylan Drive  
Novi, Michigan 48377

P: 248-596-3200  
F: 248-596-3201

### **Canada Numatics, Ltd**

P: 519-758-2700  
F: 519-758-5540

### **México - Ascomatica SA de CV**

P: 52 55 58 09 56 40 (DF y Area metropolitana)  
P: 01 800 000 ASCO (2726) (Interior de la República)  
F: 52 55 58 09 56 60

### **Brazil Ascoval Ind.e Comercio Ltda**

P: (55) 11-4208-1700  
F: (55) 11-4195-3970