

Type 8200

Probe Holder



Operating Instructions

We reserve the right to make technical changes without notice.

© Bürkert SAS 2013-2026

Technical documentation 2602/02_GBen_00564990_1157612811_1157758347 / Original EN

Table of Contents

1	About this document	4
1.1	Symbols	4
1.2	Terms and abbreviations	5
1.3	Manufacturer	5
2	Safety	6
2.1	Intended use	6
2.2	Safety instructions	6
3	Technical data	8
3.1	Standards and directives	8
3.2	Conditions of use	8
3.3	Dimensions	8
3.4	Mechanical data	8
4	Installation, commissioning	10
4.1	Safety instructions	10
4.2	Installation of a 8200 G2" version onto an S020 fitting	11
4.3	Installation of a 8200 G1" version onto a Tee fitting	11
4.4	Installation of a stick connection 8200 onto a Tee fitting	11
4.5	Installation of a 8200 clamp version	12
4.6	Installation of a 8200 for DN50 thread process connection	12
5	Maintenance and cleaning	13
5.1	Safety instructions	13
5.2	Cleaning	13
6	Spare parts and accessories	14
7	Logistics	15
7.1	Transport and storage	15
7.2	Return	15
7.3	Disposal	15

1 About this document

The document is an important part of the product and guides the user to safe installation and operation. The information and instructions in this document are binding for the use of the product.

- ▶ Before using the product for the first time, read and observe the whole safety chapter.
- ▶ Before starting any work on the product, read and observe the respective sections of the document.
- ▶ Keep the document available for reference and give it to the next user.
- ▶ Contact the Bürkert sales office for any questions.



Further information concerning the product at [Products](#).

- ▶ Enter the article number from the type label in the search bar.

The illustrations in these instructions may vary depending on the product variant.

1.1 Symbols



DANGER!

Warns of a danger that leads to death or serious injuries.



WARNING!

Warns of a danger that can lead to death or serious injuries.



CAUTION!

Warns of a danger that can lead to minor injuries.

NOTICE!

Warns of property damage on the product or the installation.



Indicates important additional information, tips and recommendations.



Refers to information in this document or in other documents.

- ▶ Indicates a step to be carried out.

✓ Indicates a result.

Menu Indicates a software user-interface text.

1.2 Terms and abbreviations

The terms and abbreviations are used in this document to refer to following definitions.

Product	Probe holder Type 8200
---------	------------------------

1.3 Manufacturer

Bürkert SAS

20, rue du Giessen

67220 TRIEMBACH-AU VAL

FRANCE

The contact addresses are available at [Contact](#).



Need more information or additional products?

- ▶ Explore the full range of products on our [eShop](#).

2 Safety

2.1 Intended use

Use of the probe holder that does not comply with the instructions could present risks to people, nearby installations and the environment.

The 8200 probe holder allows to install an analytical probe on a Bürkert S020 fitting or on a Tee fitting available on the market.

- ▶ Use the holder in compliance with the specifications and conditions of commissioning and use given in the contractual documents, in these operating instructions and in the operating instructions for the device which is inserted into the holder.
- ▶ Safe and trouble-free operation of the holder depends on its proper transport, storage and installation, as well as careful operation and maintenance.
- ▶ Only use the holder as intended.

2.2 Safety instructions

This safety information does not take into account any contingencies or occurrences that may arise during installation, use and maintenance of the device.

The operating company is responsible for the respect of the local safety regulations including for the staff safety.

Danger due to high pressure in the installation.

Danger due to high temperatures of the medium.

Danger due to the nature of the medium.

Various dangerous situations

To avoid personal injury, take care to:

- ▶ Prevent any unintentional power supply switch-on.
- ▶ Ensure that installation and maintenance work are carried out by qualified, authorised personnel in possession of the appropriate tools.
- ▶ Guarantee a set or controlled restarting of the process, after a power supply interruption.
- ▶ Use the holder only if in perfect working order and in compliance with the instructions provided in the Operating Instructions.
- ▶ To observe the general technical rules when installing and using the holder.
- ▶ Not to use the holder in explosive atmospheres.
- ▶ Not to use medium that is incompatible with the materials from which the holder is made.
- ▶ Not to use the holder in an environment incompatible with the materials from which it is made.
- ▶ Not to subject the holder to mechanical loads.
- ▶ Not to paint the internal or external threaded parts.

The holder may be damaged by the medium in contact with

- ▶ Systematically check the chemical compatibility of the component materials of the holder and the media likely to come into contact with it (for example: alcohols, strong or concentrated acids, aldehydes, alkaline compounds, esters, aliphatic compounds, ketones, halogenated aromatics or hydrocarbons, oxidants and chlorinated agents).

3 Technical data

3.1 Standards and directives

This product complies with the legal requirements applicable at the time of placing on the market and has been developed and tested in accordance with the relevant European directives/regulations and harmonized standards. The conformity is documented and, if necessary, supported by evidence. The EU Declaration of Conformity can be found behind the respective type on the home page country.burkert.com

3.2 Conditions of use

Medium temperature	Depends on the inserted probe and the fitting used. Refer to the relevant operating instructions. If the temperature ranges are different, use the most restrictive range.
Pressure class	Depends on the inserted probe and the fitting used. Refer to the relevant operating instructions. If the pressure ranges are different, use the most restrictive range.
Storage temperature	<ul style="list-style-type: none"> • G2" PVC: 0...+50°C • G2" stainless steel: -20...+130°C • G1": 0...+50°C • Clamp 1½": -10...+135°C • Clamp 2" (ISO 2852) or for DN50 thread process connection (acc. to SMS 1145): -20...+140°C

3.3 Dimensions

Refer to the related datasheet at [Type 8200](#)

3.4 Mechanical data

Type of holder	Process connection
For general purpose (not hygienic)	<ul style="list-style-type: none"> • G2": with insertion fitting type S020 • G1": with Tee fitting available on the market • Stick: with Tee fitting d32xd32 up to d32xd110
Hygienic	<ul style="list-style-type: none"> • Clamp 1½", Ø 50,5 mm (ISO 2852) • Clamp 2", Ø 64 mm (ISO 2852) • For DN50 thread process connection (SMS 1145)

Type of connection	Material		Medium temperature	Medium pressure
	Frame	Seal		
For general purpose				
 <p>G2"</p>	Stainless steel (316L / 1.4404), PVC	FKM (EPDM on request)	<ul style="list-style-type: none"> • With S020 PVC fitting: 0...+50°C • Stainless steel: -20...+130°C 	<ul style="list-style-type: none"> • With S020 PVC fitting: PN10 • Stainless steel: PN16
 <p>G1" or stick connection</p>	PVC	FKM	0...+50°C	PN10
Hygienic				
 <p>Clamp 1½" Insertion depth: 117 mm</p>	Stainless steel (316L / 1.4404)	FKM	-10...+135°C	PN6
 <p>Clamp 2" For DN50 thread process connection</p>	Stainless steel (316L / 1.4404)	EPDM	-10...+140°C	PN16

MAN 1000299438 EN Version: A Status: RL (released | freigegeben) printed: 19.05.2026

4 Installation, commissioning

4.1 Safety instructions



DANGER!

Risk of injury due to high pressure in the installation.

- ▶ Stop the circulation of medium, cut-off the pressure and drain the pipe before loosening the process connections.



DANGER!

Risk of injury due to high medium temperatures.

- ▶ Use safety gloves to handle the holder.
- ▶ Stop the circulation of medium and drain the pipe before loosening the process connections.



DANGER!

Risk of injury due to the nature of the medium.

- ▶ Respect the prevailing regulations on accident prevention and safety relating to the use of hazardous products.



WARNING!

Risk of injury if the holder is not tight.

- ▶ Make sure that a probe is inserted in every hole to ensure the tightness of the holder.



WARNING!

Risk of injury due to nonconforming installation.

- ▶ Installation can only be carried out by qualified and authorised personnel with the appropriate tools.
- ▶ Observe the installation instructions for the measuring device inserted into the holder.



WARNING!

Risk of injury due to an uncontrolled restart.

- ▶ Ensure that the restart of the installation is controlled after any interventions on it.



WARNING!

Danger due to nonconforming commissioning.

Nonconforming commissioning may lead to injuries and damage the holder and its surroundings..

- ▶ Before commissioning, make sure that the staff in charge have read and fully understood the contents of the Operating Instructions.
- ▶ In particular, observe the safety recommendations and intended use.
- ▶ The installation must only be commissioned by suitably trained staff.

4.2 Installation of a 8200 G2" version onto an S020 fitting

NOTICE!

Make sure the S020 fitting used for the installation of a G2" holder is a special fitting for analysis (see the data sheets of the S020 fitting).

NOTICE!

Fit the fitting at an angle of $\pm 75^\circ$ max. to the vertical in order to ensure the good operation of the pH/redox probe.

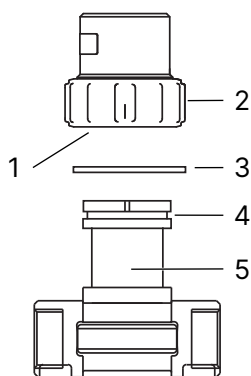


Fig. 1: Installation of a G2" holder

1 Seal	2 Nut
3 Snap ring	4 Groove
5 Fitting S020	

- ▶ Install the fitting in compliance with the instructions provided in the Operating Instructions.
- ▶ Check that the seal is on the fitting and that it is not damaged. Replace it if necessary.
- ▶ Unscrew the nut from the holder.
- ▶ Insert the nut on the fitting S020.
- ▶ Insert the snap ring in the groove.
- ▶ Check that the seal is correctly inserted in the holder.
- ▶ Place the holder onto the fitting.
- ▶ Screw the nut to the holder to fix it to the fitting.
- ▶ Insert the probes in the corresponding holes.

4.3 Installation of a 8200 G1" version onto a Tee fitting

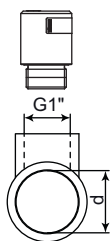


Fig. 2: Installation of a G1" holder

- ▶ Check that the seal is on the holder.
- ▶ Screw the G1" holder onto the Tee fitting.
- ▶ Insert the probes in the corresponding holes.

4.4 Installation of a stick connection 8200 onto a Tee fitting

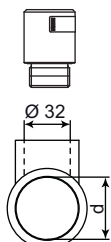
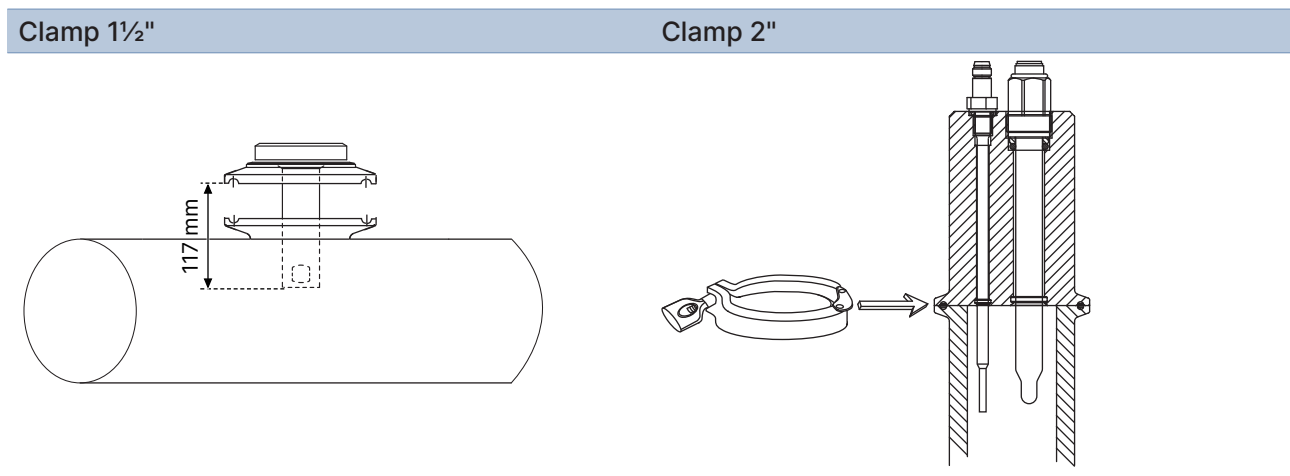


Fig. 3: Installation of a stick holder

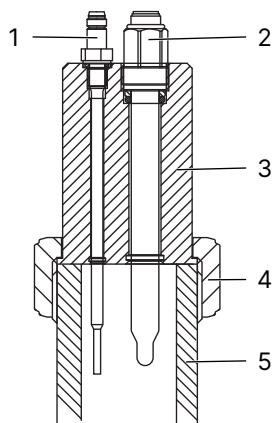
- ▶ Stick the 8200 PVC-U holder onto a PVC-U Tee fitting with appropriate dimensions.
- ▶ Insert the probes in the corresponding holes.

4.5 Installation of a 8200 clamp version



- ▶ Check that the seal is on the holder.
- ▶ Install the clamp holder onto the clamp of the pipe.
- ▶ Only for version Clamp 1½", observe the 117 mm of the insertion depth.
- ▶ Place the clamps together.
- ▶ Fix the clamps with the flange clamp.
- ▶ Insert the probes in the corresponding holes.

4.6 Installation of a 8200 for DN50 thread process connection



- ▶ On the pipe, install a DN50 spigot (not provided by Bürkert), compatible with SMS 1145 and place a seal (not provided by Bürkert) if necessary.
- ▶ Place the probe holder onto the spigot.
- ▶ Screw the nut (not provided by Bürkert) to the holder to fix it to the spigot.
- ▶ Insert the probes in the corresponding holes.

Fig. 4: Installation of a probe holder type 8200 for DN50 thread

1 Pt1000 temperature probe	2 Analytical probe
3 Probe holder	4 Nut
5 Spigot	

5 Maintenance and cleaning

5.1 Safety instructions



DANGER!

Risk of injury due to high pressure in the installation.

- ▶ Stop the circulation of medium, cut-off the pressure and drain the pipe before loosening the process connections.



DANGER!

Risk of injury due to high medium temperatures.

- ▶ Use safety gloves to handle the holder or the adapter.
- ▶ Stop the circulation of medium and drain the pipe before loosening the process connections.
- ▶ Keep all easily flammable medium or material away from the holder or the adapter.



DANGER!

Risk of injury due to the nature of the medium.

- ▶ Respect the prevailing regulations on accident prevention and safety relating to the use of aggressive media.



WARNING!

Risk of injury due to nonconforming maintenance.

- ▶ Maintenance must only be carried out by qualified and skilled staff with the appropriate tools.
- ▶ Ensure that the restart of the installation is controlled after any interventions.

5.2 Cleaning

NOTICE!

The holder may be damaged by the cleaning product.

- ▶ Clean the holder with a cloth dampened with water or a detergent compatible with the materials the holder is made of.

6 Spare parts and accessories



CAUTION!

Risk of injury and/or damage caused by the use of unsuitable parts.

Incorrect accessories and unsuitable spare parts may cause injuries and damage the product and the surrounding area.

- ▶ Use only original accessories and original spare parts from Bürkert.

Accessory	Article number
Set with FKM seals	429 264
Set with 1 green FKM + 1 black EPDM seal	552 111

7 Logistics

7.1 Transport and storage

- ▶ Protect the device against moisture and dirt in the original packaging during transportation and storage.
- ▶ Avoid UV radiation and direct sunlight.
- ▶ Protect connections, if present, from damage with protective caps.
- ▶ Observe the permitted storage temperature.

7.2 Return



No work or tests will be carried out on the device until a valid Contamination Declaration has been received.

- ▶ To return a used device to Bürkert, contact the Bürkert sales office. A return number is required.

7.3 Disposal

Environmentally friendly disposal



- ▶ Follow national regulations regarding disposal and the environment.
- ▶ Collect electrical and electronic devices separately and dispose of them as special waste.

Further information at country.burkert.com