

# Ultra-Clean Hygienic Pressure Control Solutions



**TESCOM™** Pressure control solutions from simple and cost effective to complex or automated, designed with ultra-clean standards in mind.

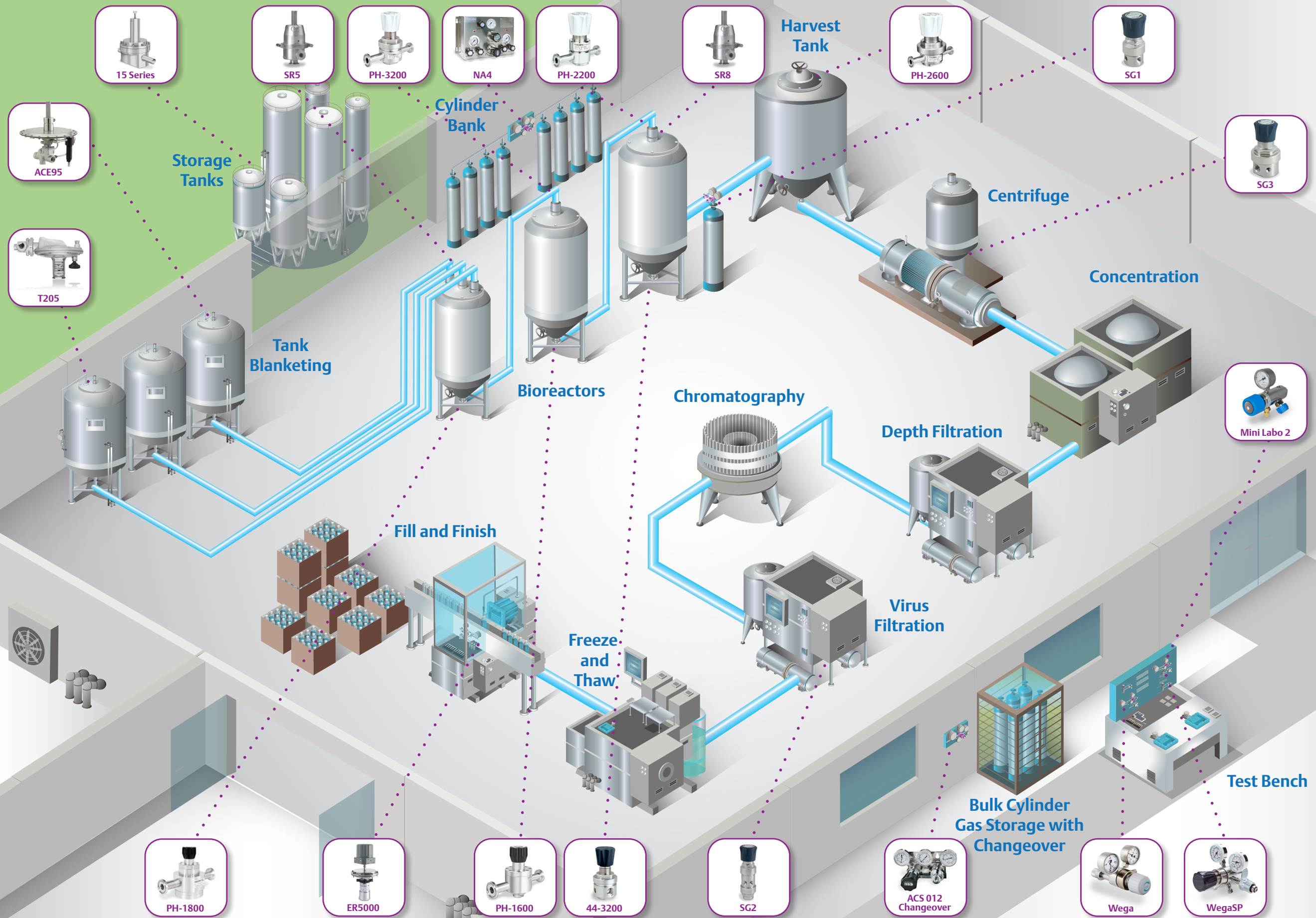
From process air and clean steam to specialty gas control, you'll find TESCOM™ regulators, valves and systems in all facets of R&D and manufacturing. Emerson specializes in precision, hygienic control that ensures product quality by providing the most inert flow path possible. Our comprehensive certifications ensure that your needs are met every time.

- Most inert flow path ensures high quality product through less contamination
- Designed to minimize space and eliminate mechanical polishing
- Every unit is serial numbered for superior traceability
- Deliver ultra-precise control or process automation with fully tunable, closed loop electronic pressure controls
- Pre- and Post-sale technical support, certifications and fail-safe features ensure you are getting the right solution for your application



EMERSON. CONSIDER IT SOLVED.™

# Ultra-Clean Hygienic Pressure Control Solutions





# Broad Portfolio. Ultra-Clean. Precise Control.

## Sanitary Pressure Regulation



### TESCOM™ Pharmpure™ Series

- PH1600, PH1800, PH2200, PH2600, PH3200 models
- USP Class VI and BPE compliant design
- Gas flows up to 2000 SCFM / 56,634 SLPM
- Diffusion resistant metal diaphragm and Gylon® seals ensure gas purity and integrity
- Suitable for specialty, corrosive and pyrophoric gases
- Sparge gases, clean steam for sanitation, transfer panels, low flow specialty gas and vessel headspace pressurization



### Fisher™ SR Series

- Includes Type SR5 and Type SR8
- Compact, large capacity, self-operated, self draining
- Polyetheretherketon (PEEK) soft seat option for ANSI Class IV Shutoff
- Designed for sanitary uses with Tri-Clamp® end connections
- Suitable for steam, liquid or gas service

## Point-Of-Use Pressure Regulation



### TESCOM Labo Series

- Includes Labo-F (single-stage) and Doppelregulus (dual-stage) cylinder pressure regulators
- Includes shut-off valve for high flow capacity (up to 50 m<sup>3</sup>/h)
- Ideal for precise control of non-corrosive gases (purity of 5.0 / 99.999 Vol %) and low outlet pressures



### TESCOM Wega Series

- Includes Wega SP, Wega Mini and Wega 1 and 2 models
- For the reduction of high pressure gases in storage cylinders to a low operating pressure
- Single and dual-stage designs
- Mini version designed for lecture bottle and mobile applications
- Ideal for use with corrosive gases or calibration gases with gas purity of up to 6.0

## Additional Pressure Control Solutions



### TESCOM NA4 Series

- Changeover system ensures continuous supply of carrier and calibration gases
- No interruption due to supply depletion or change out
- Can include CGA connections, hoses, check valves, purge valves, pressure switches, alarms, etc.
- Supports up to 16 cylinders
- Ideal for gas delivery systems



### TESCOM SG Series

- Includes SG1, SG2 and SG3 models, in single-stage or two-stage
- Easy to order optional gauges, relief and shut-off valves
- For control of specialty and industrial gas flows of less than 10 SCFM / 283 SLPM
- Sensitive and extra long life metal diaphragm ensures gas purity and integrity
- Ideal for laboratory and point-of-use gas systems and other high purity applications



### TESCOM ER5000 Series

- Microprocessor based PID Controller brings precise algorithmic pressure control - accuracy of 0.1% of setpoint
- Use as standalone unit or with TESCOM regulators
- Paired with a regulator, control pressures up to 30,000 psig / 2086 bar
- Free ERTune™ software included



### Fisher T205 and T208 Series

- Tank Blanketing regulators, direct-operated and spring-loaded
- Prevents stored liquid from vaporizing into the atmosphere, reduces liquid combustibility, oxidation and contamination
- Low pressure setting and fast speed of response

## Emerson Automation Solutions Regulator Technologies

### Americas

T +1 800 447 1250  
T +1 763 241 3238

### Europe

T +49 0 38823 31-0

### Asia Pacific

T +65 6770 8337

### Middle East / Africa

T +971 4811 8100

✉ [webadmin.regulators@emerson.com](mailto:webadmin.regulators@emerson.com)

🔍 [Tescom.com](http://Tescom.com)

📘 [Facebook.com/EmersonProcessManagement](https://Facebook.com/EmersonProcessManagement)

🌐 [LinkedIn.com/company/emerson-automation-solutions](https://LinkedIn.com/company/emerson-automation-solutions)

🐦 [Twitter.com/emersonprocess](https://Twitter.com/emersonprocess)