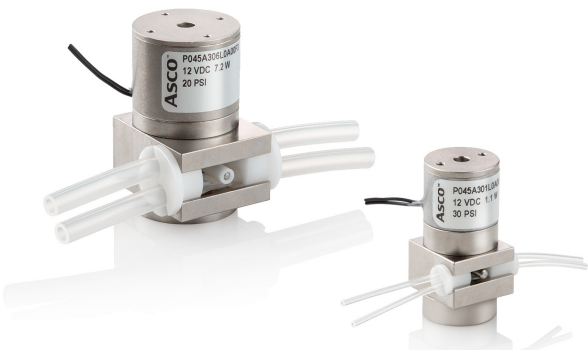
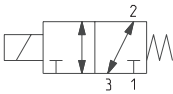


# COMPACT 3-WAY SOLENOID PINCH VALVES

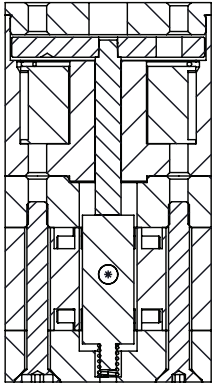
- The 045 Series is a compact 3-way solenoid pinch valve designed for use with highly aggressive or high-purity liquids in analytical and medical instrumentation, and industrial applications
- Hermetic separation of control mechanism and the fluid within the tubing prevents particulate contamination caused by friction of moving parts, assuring maximum purity of liquids
- Available in a range of body sizes to accommodate a wide variety of tubing sizes
- Meets all relevant CE directives, and is RoHS compliant
- Typical applications include:
  - Hemodialysis
  - Bioinstrumentation
  - Surgical Fluid Management
  - Pharmaceutical



Fluids*	Temperature Range
Air, Inert Gases, Water, Oil or Liquids	0 °C to 25 °C (32 °F to 77 °F)

\* Ensure that the compatibility of the fluids in contact with the materials is verified

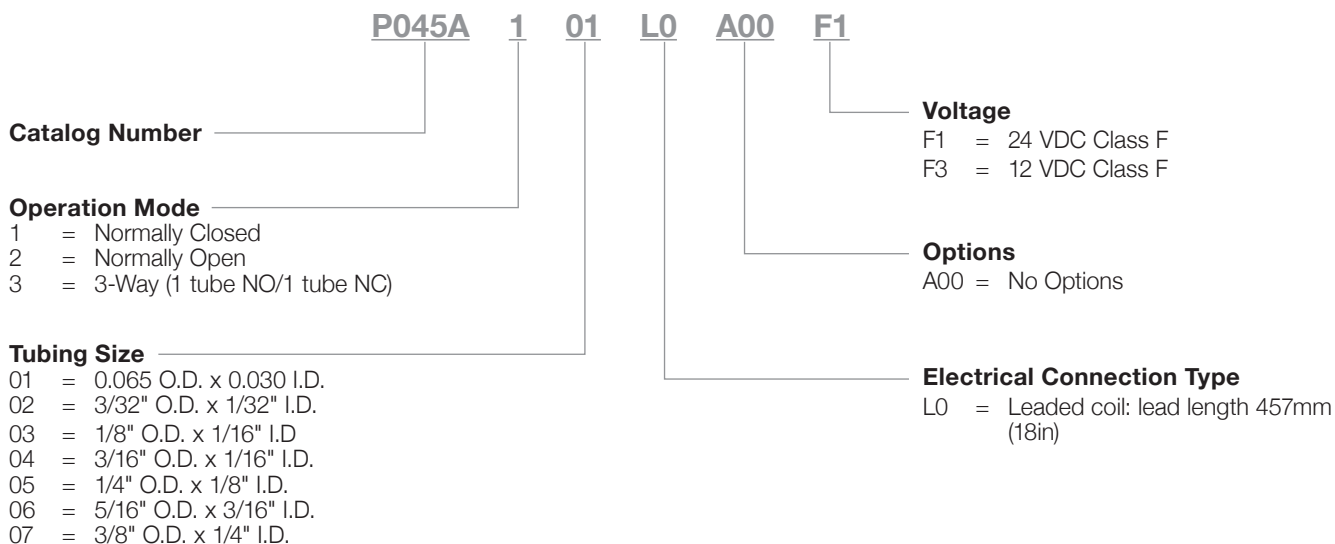
Materials in Contact with Fluid	
Recommended Tubing	VMQ (silicone) (max. hardness: 50 Shore A)
Other Materials	
Body	Aluminum
Pinch Mechanism	POM, Aluminum
Internal Parts	Stainless Steel
Response Time	5 to 25ms



Electrical Characteristics	
Coil Insulation Class	F
Connector	22 AWG Lead Wires, 457mm (18in) long, PTFE coated 26 AWG Lead Wires, 457mm (18in) long, PTFE Coated
Electrical Safety	IEC 335
Electrical Enclosure Protection	IP64
Standard Voltages	12 VDC, 24 VDC
Power Consumption	1.0 to 7.2 Watts

Specifications						
Tube I.D.	Tube O.D.	Pressure Differential bar (psi)		Power Coil	Construction Reference	Catalog Number
mm (inches)	mm (inches)	min.	max.	W		
<b>3/2 - Universal (1 Tube NO/ 1 Tube NC)</b>						
0.762 (0.030)	1.65 (0.065)	0	30 (2.07)	1	1	P045A301L0A00xx
0.794 (0.031)	2.38 (0.094)	0	30 (2.07)	1.5	2	P045A302L0A00xx
1.59 (0.063)	3.17 (0.125)	0	30 (2.07)	1.5	2	P045A303L0A00xx
1.59 (0.063)	4.76 (0.187)	0	30 (2.07)	4.2	3	P045A304L0A00xx
3.17 (0.125)	6.35 (0.25)	0	20 (1.38)	4.2	3	P045A305L0A00xx
4.76 (0.187)	7.94 (0.312)	0	20 (1.38)	7.2	4	P045A306L0A00xx

## How to Order



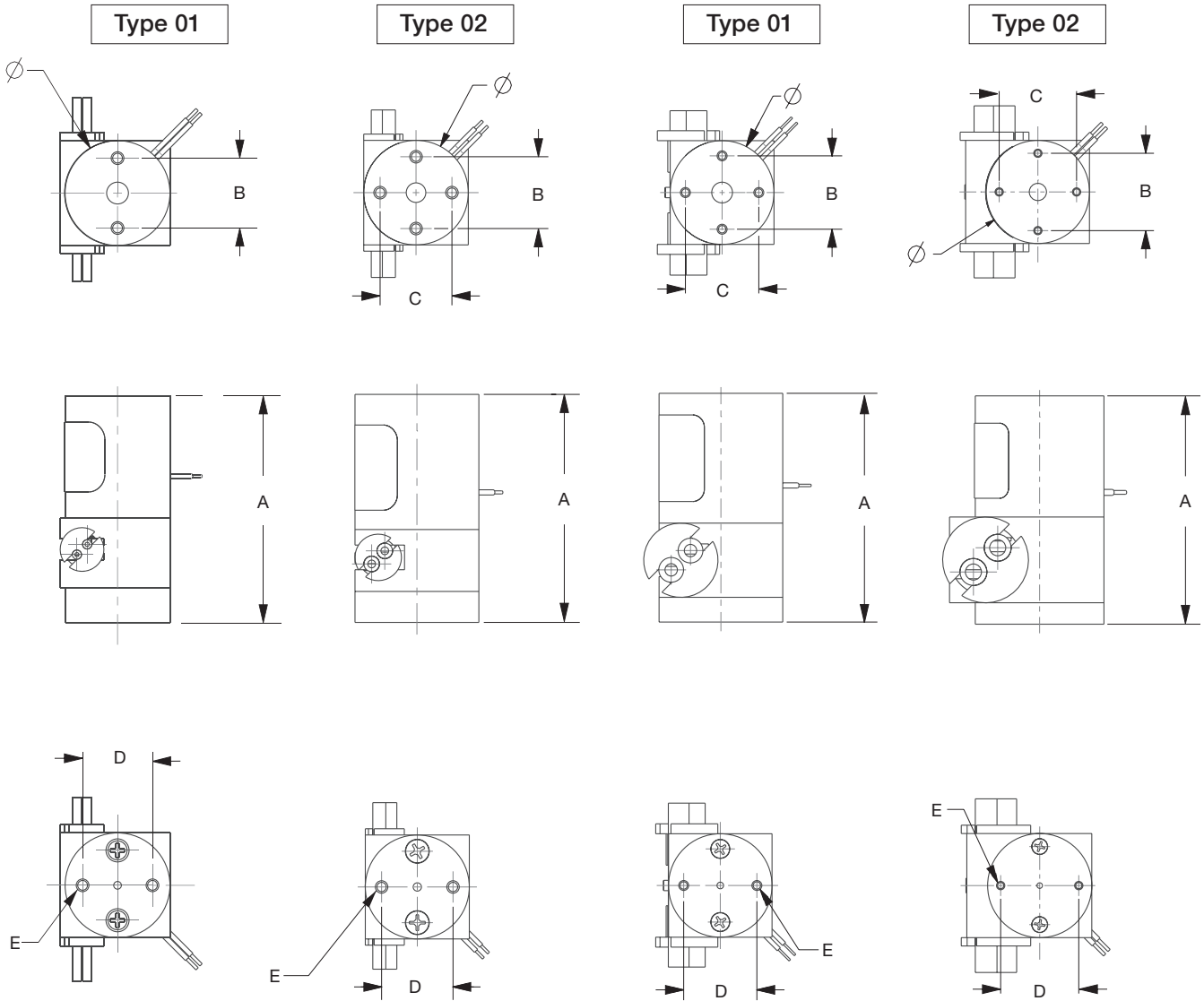
## Options

- Contact us for information regarding the usage of different tubing other than those recommended

## Installation

- The solenoid valves can be mounted in any position without affecting operation, however, for optimum performance it is recommended that they be fitted with the solenoid operator at the top
- Do not connect the solenoid valve to the power supply without fitting a flexible tube beforehand
- 305mm (12in) Flexible tubing is pre-installed with each valve

Dimensions: mm (inches)



Type	Catalog Number	Ø	A	B	C	D	E
01	P045A301xxxxxxxxx	19.05 (0.750)	41.28 (1.625)	12.70 (0.500)	-	12.70 (0.500)	#2-56
02	P045A302xxxxxxxxx	25.40 (1.000)	46.77 (1.842)	17.45 (0.687)	17.40 (0.687)	17.45 (0.687)	#4-40
	P045A303xxxxxxxxx						
03	P045A304xxxxxxxxx	31.75 (1.250)	58.74 (2.313)	22.45 (0.884)	22.45 (0.884)	22.45 (0.884)	#4-40
	P045A305xxxxxxxxx						
04	P045A306xxxxxxxxx	38.1 (1.500)	67.63 (2.663)	28.58 (1.125)	28.58 (1.125)	28.58 (1.125)	#4-40