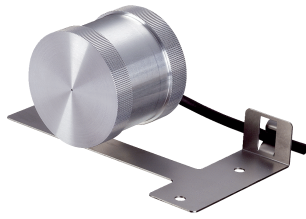


DKV60

Rugged, high-performance measuring wheel incremental encoder

MEASURING WHEEL ENCODERS

SICK
Sensor Intelligence.



Technical data overview

Resolution in pulses/mm	0.015 ... 10 (depending on type) (depending on type)
Spring deflection spring arm	± 1.5 mm
Measuring wheel circumference	200 mm
Measuring wheel surface	Knurled / O ring EPDM (depending on type) (depending on type)
Communication interface	Incremental
Communication Interface detail	TTL / HTL (depending on type) (depending on type)
Connection type	Cable, 8-wire, universal Cable, 8-wire, with male connector, M12, 8-pin, universal (depending on type)
Supply voltage	4.5 V ... 30 V (depending on type) (depending on type)

Product description

The DKV60 compact measuring wheel encoder is a low-cost solution for determining position and speed directly on conveyor belts or rollers. The DKV60 consists of an incremental encoder, a measuring roller, an installation plate, and a cable guide. It is delivered fully pre-assembled. 2 different measuring wheel surfaces ensure the encoder can adapt to the surface to be measured.

At a glance

- Complete, preassembled measuring system
- Measuring wheel with knurl or O-ring for adaptation to the measuring surface
- Mounting bracket made from anti-corrosive spring steel
- High resolution up to 0.1 mm (1 ... 2.000 pulses/revolution)
- Electrical interfaces: Open collector NPN, TTL/RS-422 or HTL/push pull.
- Connection via cable connection, for radial or axial use with open ends or fitted with an M12 connector

Your benefits

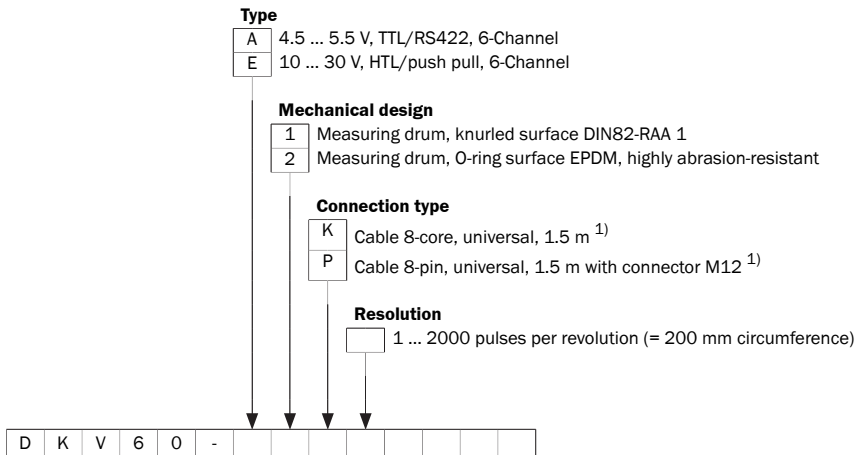
- Complete system with universal mounting clamps and integrated cable guidance for quick and easy mounting
- Spring steel mounting clamps for a high level of measurement accuracy when deflecting the measuring wheel in X and Y directions
- Low-cost encoder of outstanding quality
- Thanks to a high IP protection class, a non-corrosive mounting bracket, and a rugged encoder, the device is suitable for use in harsh ambient conditions.
- Compact dimensions facilitate straightforward installation even where space is at a premium

Fields of application

- Measurement of position and speed directly on conveyor belts in wood processing machines, steel and metal processing machines, handling and warehouse systems, sorting systems and conveyor belts, textile machines, printing and paper

Type code

Other models and accessories → www.sick.com/DKV60



¹⁾ The universal cable outlet is positioned so that a kink-free cable in a radial or axial direction is possible.

Ordering information

Other models and accessories → www.sick.com/DKV60

- **Measuring wheel circumference:** 200 mm
- **Spring arm design:** 69.5 mm spring arm

Measuring wheel surface	Communication interface	Supply voltage	Connection type	Resolution in pulses/mm	Type	Part no.		
O ring EPDM	10 V ... 30 V, Incremental, HTL, Push pull	10 V ... 30 V	Cable, 8-wire, universal, 1.5 m	0.1	DKV60-E2K00020	1035051		
				0.2	DKV60-E2K00040	1035571		
				0.5	DKV60-E2K00100	1035572		
				1	DKV60-E2K00200	1035052		
				5	DKV60-E2K01000	1035053		
				6	DKV60-E2K01200	1035055		
				10	DKV60-E2K02000	1035054		
			Cable, 8-wire, with male connector, M12, 8-pin, universal, 1.5 m	0.02	DKV60-E2P00004	1071886		
				1	DKV60-E2P00200	1037803		
			4.5 V ... 5.5 V, Incremental, TTL, RS-422	4.5 V ... 5.5 V	Cable, 8-wire, universal, 1.5 m	0.1	DKV60-A2K00020	1035043
							DKV60-A2K00200	1035044
						0.5	DKV60-A2K00100	1036267
					5	DKV60-A2K01000	1035045	
	10	DKV60-A2K02000			1035046			
Cable, 8-wire, with male connector, M12, 8-pin, universal, 1.5 m	0.1	DKV60-A2P00020			1077883			
	10	DKV60-A2P02000	1036587					

Measuring wheel surface	Communication interface	Supply voltage	Connection type	Resolution in pulses/mm	Type	Part no.		
Knurled	10 V ... 30 V, Incremental, HTL, Push pull	10 V ... 30 V	Cable, 8-wire, universal, 1.5 m	0.015	DKV60-E1K00003	1035767		
				0.02	DKV60-E1K00004	1036157		
				0.075	DKV60-E1K00015	1036156		
				0.1	DKV60-E1K00020	1035047		
				1	DKV60-E1K00200	1035048		
				5	DKV60-E1K01000	1035049		
				10	DKV60-E1K02000	1035050		
			Cable, 8-wire, with male connector, M12, 8-pin, universal, 1.5 m	0.02	DKV60-E1P00004	1073187		
				1	DKV60-E1P00200	1036071		
				5	DKV60-E1P01000	1050657		
			10 V ... 30 V, Incremental, TTL, RS-422	10 V ... 30 V	0.1	DKV60-E1P00020	1087637	
			4.5 V ... 5.5 V, Incremental, TTL, RS-422	4.5 V ... 5.5 V	Cable, 8-wire, universal, 1.5 m	0.1	DKV60-A1K00020	1035039
						1	DKV60-A1K00200	1035040
	5	DKV60-A1K01000				1035041		
	Cable, 8-wire, with male connector, M12, 8-pin, universal, 1.5 m	10			DKV60-A1K02000	1035042		
		1			DKV60-A1P00200	1035745		
		10			DKV60-A1P02000	1037527		

SICK AT A GLANCE

SICK is one of the leading manufacturers of intelligent sensors and sensor solutions for industrial applications. A unique range of products and services creates the perfect basis for controlling processes securely and efficiently, protecting individuals from accidents and preventing damage to the environment.

We have extensive experience in a wide range of industries and understand their processes and requirements. With intelligent sensors, we can deliver exactly what our customers need. In application centers in Europe, Asia and North America, system solutions are tested and optimized in accordance with customer specifications. All this makes us a reliable supplier and development partner.

Comprehensive services complete our offering: SICK LifeTime Services provide support throughout the machine life cycle and ensure safety and productivity.

For us, that is “Sensor Intelligence.”

WORLDWIDE PRESENCE:

Contacts and other locations –www.sick.com