

## FOR "T" GROOVE CYLINDERS

series	∅ (mm)	code fastening kit
<a href="#">441</a>	32 ... 100	(1)
<a href="#">449</a>	32 ... 100	
<a href="#">453</a>	32 ... 100	

(1) Fastening mini-kit (special nut + screw) supplied **with** detectors



NOTE:

Series 441 cylinders ∅ 32-100 mm : 6 "T" grooves

Series 449 cylinders ∅ 20-25 mm : 4 "T" grooves  
∅ 32-100 mm : 5 "T" grooves

Series 453 cylinders ∅ 32-100 mm : 5 "T" grooves

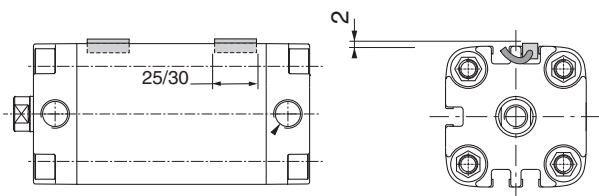
In order to control the **max. end** of cylinder stroke, the detectors must be mounted in the following direction:

**Series 441-449 cylinders:**

∅32-40: cable oriented towards the middle of the cylinder  
∅50-100: any position

**Series 453 cylinder:**

∅32-40: cable oriented towards the middle of the cylinder  
∅50-100: any position



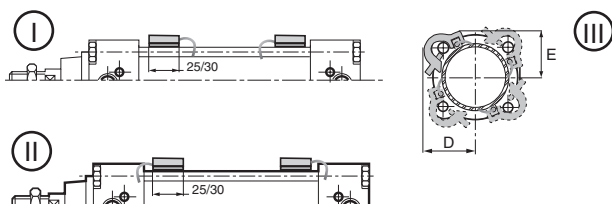
## FOR TIE RODS CYLINDERS



series	∅ (mm)	code fastening kit	
		lead outlet version	M8 connector integrated version
<a href="#">437</a>	25	<b>P494AM129200A00</b>	<b>P499440617MN001</b>
<a href="#">450</a>	32-40	<b>P494A3129200A00</b>	
	50-63-80	<b>P494A5129200A00</b>	
	100	<b>P494A8129200A00</b>	
<a href="#">437</a>	125	<b>P494AP129200A00</b>	<b>P4994406183N001</b>
	160-200	<b>P494AP129200A00</b>	-



∅ cylinder	25	32	40	50	63	80	100	125	160	200
D	24	30	33	38	44	50	69	77	89	104
E	24	26	30	35	39	49	61	69	87	101



I It is possible to fasten the detector with its electric outlet to the centre of the cylinder (in order to be able to control the **max. end** of travel of the cylinder)

II In order to fasten the detector with its electric outlet to the rear, rotate the **unit** detector + collar by 180°

III The detectors can be mounted on any one of the 4 **tie rods**.

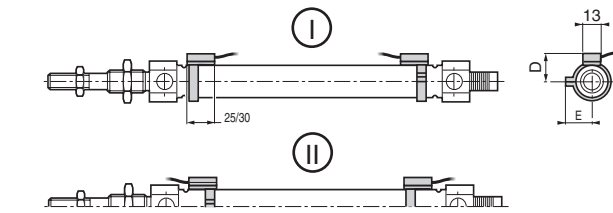
**FOR ROUND CYLINDERS**



series	Ø (mm)	code fastening kit	
		plastic	stainless steel (AISI 303 + 304)
435 438 431	8-10	-	P494AG129600A00
	12	P494AJ129300A00	P494AK129600A00
	16	P494AK129300A00	P494AK129600A00
	20	P494AL129300A00	P494AL129600A00
	25	P494AM129300A00	P494AL129600A00
	32	P494A3129300A00	P494A3129600A00
	40	P494A4129300A00	P494A4129600A00
	50	-	P494A5129600A00
	63	-	P494A6129600A00
80	-	P494A8129600A00	
436	250	-	P494AS129200A00

Ø 12 to 40 mm

Ø 8 to 80 mm



I On all diameters, it is possible to mount the detector with its electrical outlet facing towards the cylinder **barrel** (in order to be able to control the **max. end** of travel of the cylinder).

II In order to fasten the detector on cylinder diameters 25 to 63 with its electrical outlet facing towards the cylinder **ends**, rotate the detector + collar **unit** by 180°.

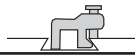
It is possible to mount magnetic detectors for **intermediate** position indication : mounting by collar

Ø 8-20 : any position.

Ø 25-80 : cable oriented towards the cylinder ends

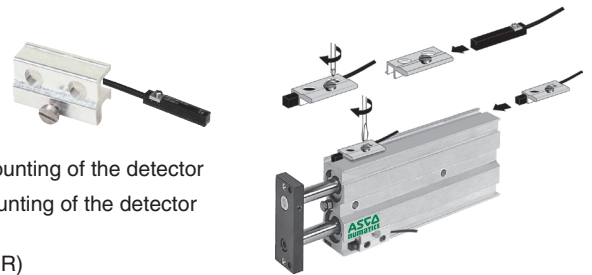
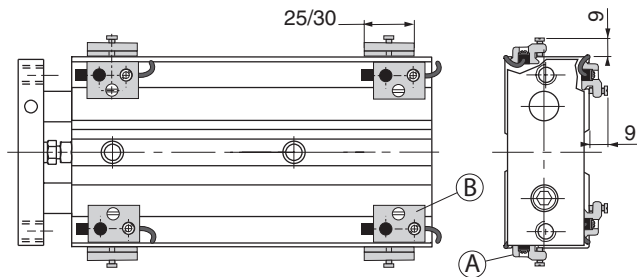
Ø cylinder	8	10	12	16	20	25	32	40	50	63
D	14,5	15,5	15	16,5	19	21,5	26,5	31	38	45
E	13,5	14,5	16,5	19	20,5	23	29,5	31,5	36,5	43,5

**ACTUATORS**



series	Ø (mm)	code fastening kit <sup>(1)</sup>
447 / 492	12 ... 32	P494A0029400A00

<sup>(1)</sup> Designed for "dove tail" grooves.



A - Lateral mounting of the detector  
B - Upper mounting of the detector

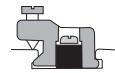
(type ILS or MR)

- Detector, lead with stripped ends :  
- stroke ≤ 25 mm: a detector following (A) mounting and the other following (B) mounting  
- stroke > 25 mm: mounting of the 2 detectors following (A) and/or (B) mounting
- Detector with lead and connector: a detector following (A) mounting and the other following (B) mounting

R (Ø12 - 20 mm)



series	Ø (mm)	code fastening kit
429	12-20 / 16-18-22	P4945256760N001



RS

