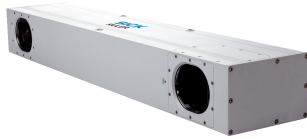


ScanningRuler

Reliable and precise snapshot 3D for large field of view

3D MACHINE VISION

SICK
Sensor Intelligence.



Technical data overview

Technology	3D snapshot
Scan/frame rate	2.5 s per 3D image
Grayscale measurements	✓
Light source	Internal lighting Laser, Visible, Red, 660 nm, ± 15 nm
Factory calibrated	✓
Enclosure rating	IP65
Configuration software	Ranger Studio
Ethernet	✓, UDP/IP

Product description

The ScanningRuler is the perfect tool for 3D imaging in robot picking applications. It provides accurate and reliable 3D measurements of stationary objects. The data that is acquired can be used to locate parts in random bin picking applications and to calculate the best robot gripping position. The camera has a built-in laser light source and provides 3D point cloud measurements in millimeters of the entire scene. These features, in combination with the camera's immunity to ambient light and its simple configuration, make the ScanningRuler very easy to integrate and use. In addition to 3D images, the ScanningRuler also provides a 2D image of the scene to simplify part identification. The ScanningRuler is connected to a PC with Gigabit Ethernet and has a rugged design that provides reliable operation in harsh industrial environments.

At a glance

- 3D imaging of stationary objects
- Large field of view for scanning U.S. and Euro pallets
- Accurate and reliable acquisition of factory-calibrated 3D data in millimeters
- High immunity to ambient light and contrast variation
- Rugged housing with built-in laser light source
- Point cloud 3D data with grayscale information

Your benefits

- 3D imaging of stationary objects reduces the effort and the costs required to develop robot picking applications
- Large field of view within a single device allows for cost-efficient solutions
- Reliable factory-calibrated 3D measurements provide easy integration, use and replacement
- High immunity to ambient light ensures accurate measurements and increased throughput in factory conditions
- Industrial design with a built-in laser light source ensures problem-free operation

Fields of application

- Random bin picking in material processing and assembly lines
- Robot picking from large pallets or trays
- Picking position of large parts in robotics applications
- De-palletizing of pallets or trays at logistics centers
- Completeness check and empty space reduction in boxes at distribution centers

Ordering information

Other models and accessories → www.sick.com/ScanningRuler

Sub product family	Description	Working distance	Laser class	Window material	Type	Part no.
ScanningRuler S1200	ScanningRuler S1200 - Snapshot 3D camera with built-in class 2M laser. For field of view up to size of Euro and U.S. pallets. Factory calibrated and Gigabit Ethernet interface.	1,000 mm ... 2,000 mm	2	Float glass, anti-reflective coated	Ruler-S2114	1051660

SICK AT A GLANCE

SICK is one of the leading manufacturers of intelligent sensors and sensor solutions for industrial applications. A unique range of products and services creates the perfect basis for controlling processes securely and efficiently, protecting individuals from accidents and preventing damage to the environment.

We have extensive experience in a wide range of industries and understand their processes and requirements. With intelligent sensors, we can deliver exactly what our customers need. In application centers in Europe, Asia and North America, system solutions are tested and optimized in accordance with customer specifications. All this makes us a reliable supplier and development partner.

Comprehensive services complete our offering: SICK LifeTime Services provide support throughout the machine life cycle and ensure safety and productivity.

For us, that is “Sensor Intelligence.”

WORLDWIDE PRESENCE:

Contacts and other locations –www.sick.com