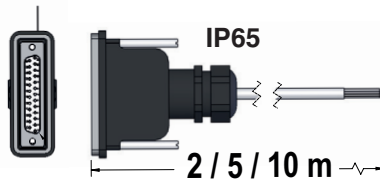
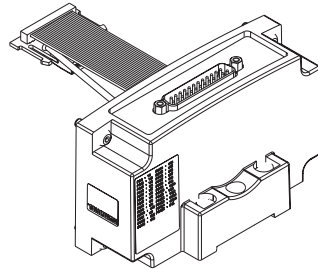
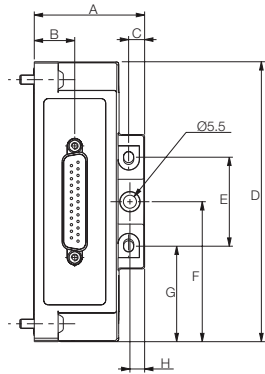


501, 502 and 503 series

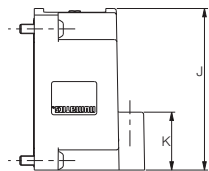
Assembly kits

(501 Series/502 Series/503 Series)

25 Pin Sub-D Connector Kit



Note: External fusing or output protection recommended.

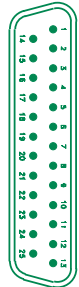


Dimensions (mm)

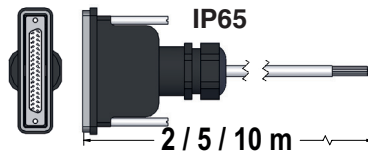
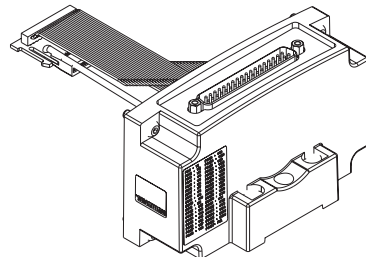
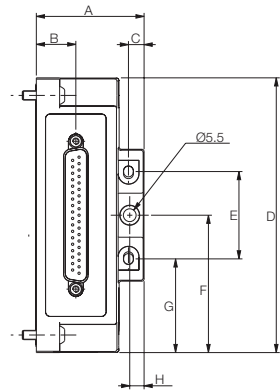
A	B	C	D	E	F	G	H	J	K
46.4	17	6.7	118	37.5	59	40.2	40.2	68.1	24.4

25 Pin Sub-D Connector Kit	
P599AE428441001	25 PIN SUB-D ASSEMBLY WITHOUT DIN RAIL
P599AE428441002	25 PIN SUB-D ASSEMBLY WITH DIN RAIL
NDB25F22U02MSB3	CABLE LENGTH 2 m
NDB25F22U05MSB3	CABLE LENGTH 5 m
NDB25F22U10MSB3	CABLE LENGTH 10 m

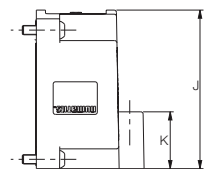
Pins 1-22 outputs
Pins 23-24 common
Pin 25 earth ground



37 Pin Sub-D Connector Kit



Note: External fusing or output protection recommended.

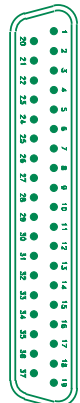


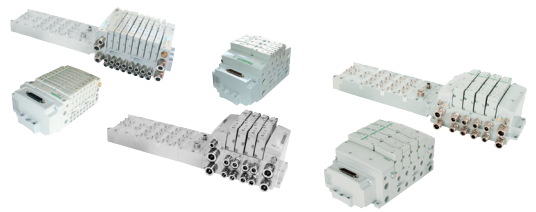
Dimensions (mm)

A	B	C	D	E	F	G	H	J	K
46.4	17	6.7	118	37.5	59	40.2	40.2	68.1	24.4

37 Pin Sub-D Connector Kit	
P599AE428442001	37 PIN SUB-D ASSEMBLY WITHOUT DIN RAIL
P599AE428442002	37 PIN SUB-D ASSEMBLY WITH DIN RAIL
NDB37F22U02MSB3	CABLE LENGTH 2 m
NDB37F22U05MSB3	CABLE LENGTH 5 m
NDB37F22U10MSB3	CABLE LENGTH 10 m

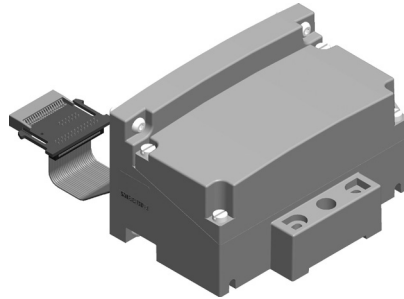
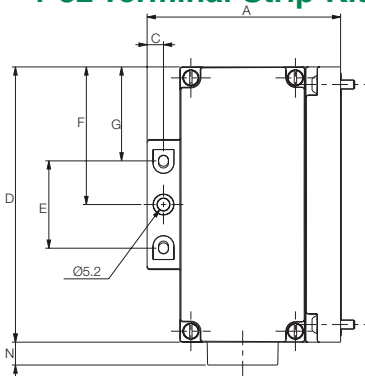
Pins 1-32 outputs
Pins 33-36 common
Pin 37 earth ground





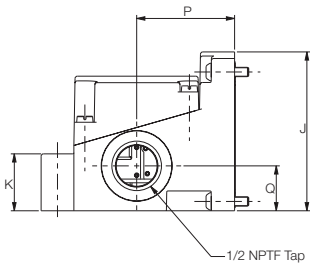
Assembly kits

1-32 Terminal Strip Kit



IP65

1-32 Terminal Strip Kit	
P599AE428444001	TERMINAL STRIP ASSEMBLY WITHOUT DIN RAIL
P599AE428444002	TERMINAL STRIP ASSEMBLY WITH DIN RAIL



Terminals 1-32 outputs
Terminal COM common
Terminal GND earth ground

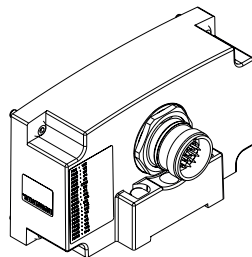
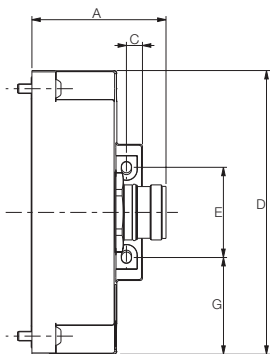
Note: External fusing or output protection recommended.

Note: min. conductor wire diam.: 0,4 mm
max. conductor wire diam.: 1,02 mm

Dimensions (mm)

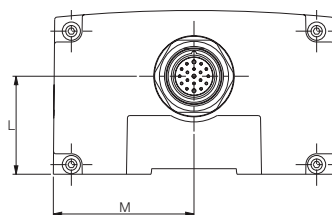
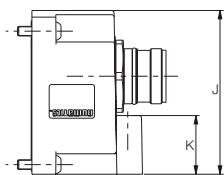
A	C	D	E	F	G	J	K	N	P	Q
82.7	7	118	37.5	59	40.2	68.1	24.4	9.8	41.9	19.3

19 Pin Round Connector Kit



IP65

19 Pin Round Connector Kit	
P599AE428436001	19 PIN ASSEMBLY WITHOUT DIN RAIL
P599AE428436002	19 PIN ASSEMBLY WITH DIN RAIL

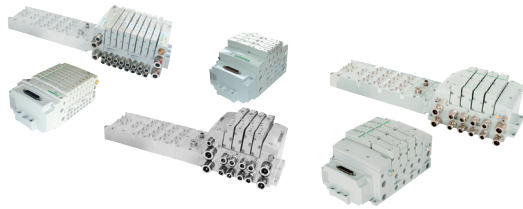


Pin 1 = Coil 15	Pin 11 = Coil 13
Pin 2 = Coil 11	Pin 12 = P.E. (earth)
Pin 3 = Coil 7	Pin 13 = Coil 12
Pin 4 = Coil 4	Pin 14 = Coil 8
Pin 5 = Coil 3	Pin 15 = Coil 1
Pin 6 = common	Pin 16 = Coil 5
Pin 7 = Coil 2	Pin 17 = Coil 9
Pin 8 = Coil 6	Pin 18 = Coil 16
Pin 9 = Coil 10	Pin 19 = N.C.
Pin 10 = Coil 14	

Dimensions (mm)

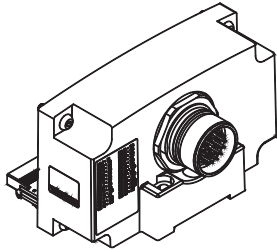
A	C	D	E	G	J	K	L	M
56.3	6.7	118	37.5	40.2	68.1	24.4	40.8	59

Note: External fusing or output protection recommended.

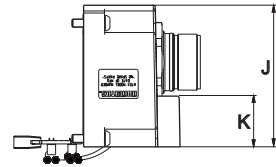
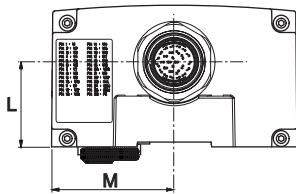
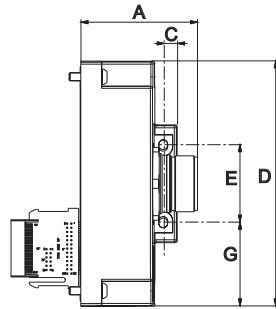


Assembly kits

26 Pin Round Connector Kit



IP65



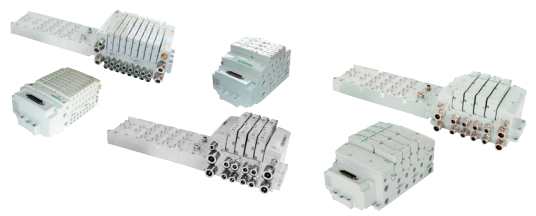
26 Pin Round Connector Kit	
P599AE502625001	26 PIN ASSEMBLY WITHOUT DIN RAIL
P599AE502625002	26 PIN ASSEMBLY WITH DIN RAIL

Pin 1 = Coil 1	Pin 14 = Coil 14
Pin 2 = Coil 2	Pin 15 = Coil 15
Pin 3 = Coil 3	Pin 16 = Coil 16
Pin 4 = Coil 4	Pin 17 = Coil 17
Pin 5 = Coil 5	Pin 18 = Coil 18
Pin 6 = Coil 6	Pin 19 = Coil 19
Pin 7 = Coil 7	Pin 20 = Coil 20
Pin 8 = Coil 8	Pin 21 = Coil 21
Pin 9 = Coil 9	Pin 22 = Coil 22
Pin 10 = Coil 10	Pin 23 = N.C.
Pin 11 = Coil 11	Pin 24 = common
Pin 12 = Coil 12	Pin 25 = common
Pin 13 = Coil 13	Pin 26 = P.E.(earth)

Dimensions (mm)

A	C	D	E	G	J	K	L	M
56.3	6.7	118	37.5	40.2	68.1	24.4	40.8	59

Note: External fusing or output protection recommended.



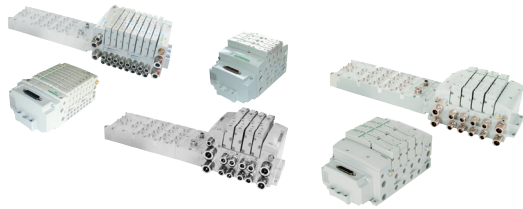
501, 502 and 503 series

Connectors

Accessory type	Designation	Code
<p>2 / 5 / 10 m</p>	25 Pin Sub-D Female Connector IP65	w/ cable 2m NDB25F22U02MSB3
		w/ cable 5m NDB25F22U05MSB3
		w/ cable 10m NDB25F22U10MSB3
<p>2 / 5 / 10 m</p>	37 Pin Sub-D Female Connector IP65	w/ cable 2m NDB37F22U02MSB3
		w/ cable 5m NDB37F22U05MSB3
		w/ cable 10m NDB37F22U10MSB3
	19 pin female M23 connector, straight IP65	w/o cable 88164102
		w/ cable 5m 88164106
	19 pin female M23 connector, 90° elbow IP65	w/o cable 88164105
		w/ cable 5m 88164107

NDB25F22U02MSB3 NDB25F22U05MSB3 NDB25F22U10MSB3
Pin 1 : white
Pin 2 : brown
Pin 3 : green
Pin 4 : yellow
Pin 5 : grey
Pin 6 : pink
Pin 7 : blue
Pin 8 : red
Pin 9 : black
Pin 10 : purple
Pin 11 : grey/pink
Pin 12 : red/blue
Pin 13 : white/green
Pin 14 : brown/green
Pin 15 : white/yellow
Pin 16 : yellow/brown
Pin 17 : white/grey
Pin 18 : grey/brown
Pin 19 : white/pink
Pin 20 : pink/brown
Pin 21 : white/blue
Pin 22 : brown/blue
Pin 23 : white/red
Pin 24 : brown/red
Pin 25 : white/black

NDB37F22U02MSB3 NDB37F22U05MSB3 NDB37F22U10MSB3
Pin 1 : white
Pin 2 : brown
Pin 3 : green
Pin 4 : yellow
Pin 5 : grey
Pin 6 : pink
Pin 7 : blue
Pin 8 : red
Pin 9 : black
Pin 10 : purple
Pin 11 : grey/pink
Pin 12 : red/blue
Pin 13 : white/green
Pin 14 : brown/green
Pin 15 : white/yellow
Pin 16 : yellow/brown
Pin 17 : white/grey
Pin 18 : grey/brown
Pin 19 : white/pink
Pin 20 : pink/brown
Pin 21 : white/blue
Pin 22 : brown/blue
Pin 23 : white/red
Pin 24 : brown/red
Pin 25 : white/black
Pin 26 : brown/black
Pin 27 : grey/green
Pin 28 : yellow/grey
Pin 29 : pink/green
Pin 30 : yellow/pink
Pin 31 : green/blue
Pin 32 : yellow/blue
Pin 33 : green/red
Pin 34 : yellow/red
Pin 35 : green/black
Pin 36 : yellow/black
Pin 37 : grey/blue



501, 502 and 503 series

Connectors

Accessory type	Designation	Code
	26 pin female M27 connector (IP 65) w/ cable 10 m	230-742E-10m

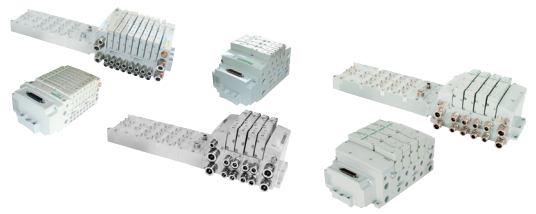
230-742E-10m	
Pin 1 : white	
Pin 2 : brown	
Pin 3 : green	
Pin 4 : yellow	
Pin 5 : grey	
Pin 6 : pink	
Pin 7 : blue	
Pin 8 : red	
Pin 9 : black	
Pin 10 : purple	
Pin 11 : pink/brown	
Pin 12 : white/pink	
Pin 13 : white/green	
Pin 14 : brown/green	
Pin 15 : white/yellow	
Pin 16 : yellow/brown	
Pin 17 : white/grey	
Pin 18 : grey/brown	
Pin 19 : red/blue	
Pin 20 : grey/pink	
Pin 21 : white/blue	
Pin 22 : brown/blue	
Pin 23 : white/red	
Pin 24 : brown/red	
Pin 25 : white/black	
Pin 26 : yellow/green	

Pin 26

PE (earth)

Pins 24-25
common

Pins 1-22
Coil

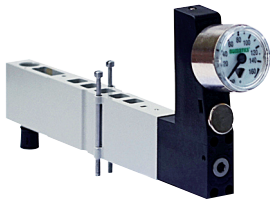


501, 502 and 503 series

Sandwich Pressure Regulators

Types: RS / RD / RE / RT

501 Series

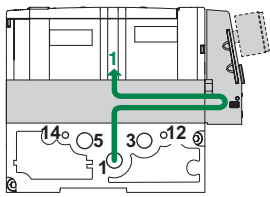
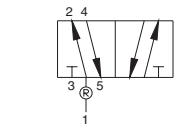


Code
R501ARS52JA0010

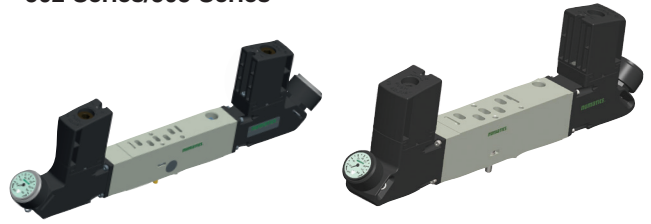
**External Outlet Regulator
Type RS**

501 Series

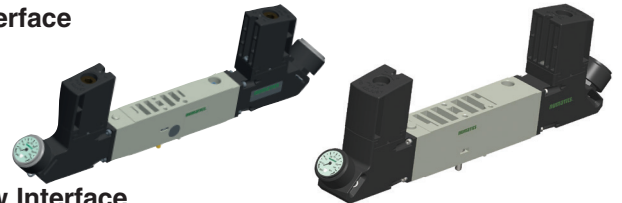
⚠ No usable for ATEX



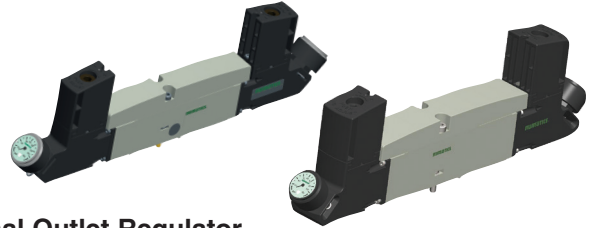
502 Series/503 Series



ISO 15407-2 Interface



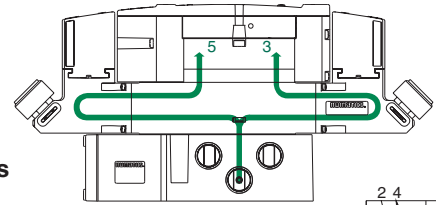
High-flow Interface



External Outlet Regulator

Type RD

502 Series/503 Series

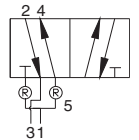


503 Series

⚠ No usable for ATEX

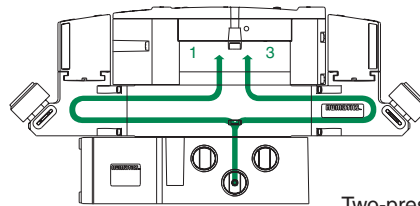
1 SUPPLY

Dual pressure from a single supply.



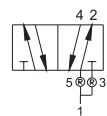
Type RT

Série 502/Série 503

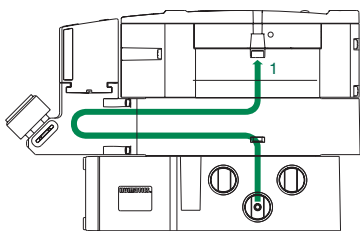


1 SUPPLY

Two-pressure selector used for multi-pressure applications.



502 Series/503 Series

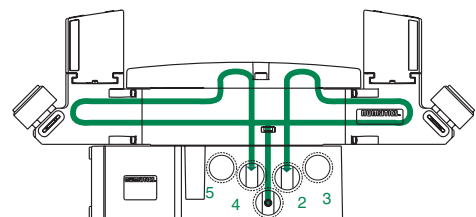


1 SUPPLY

Single pressure from a single supply.

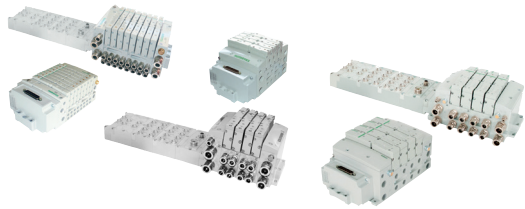
Type RE

502 Series/503 Series



1 SUPPLY

External outlet regulator used with jumper plate for single or dual pressure.



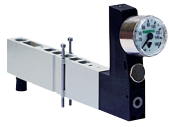
501, 502 and 503 series

Sandwich Pressure Regulator

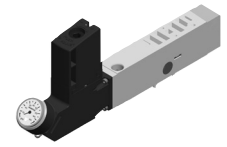
Dimensions (mm)

Single Regulator

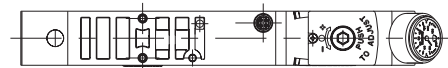
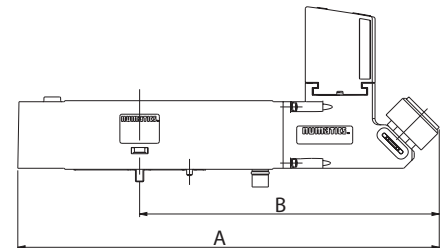
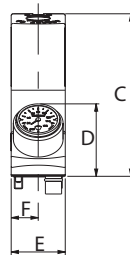
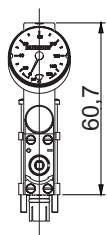
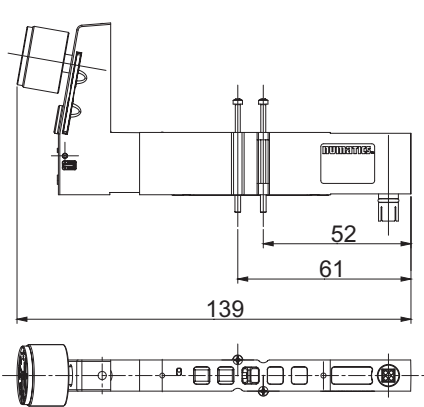
⚠ No usable for ATEX



501 Series



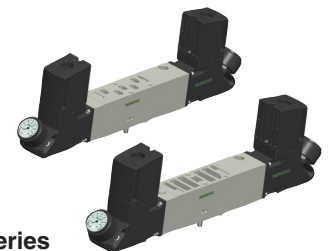
502-503 Series



	A	B	C	D	E	F
502	190,6	139,6	73,5	35,6	23,9	11,95
503	202,7	144,1	78,2	34,8	26	13



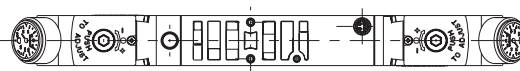
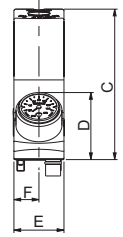
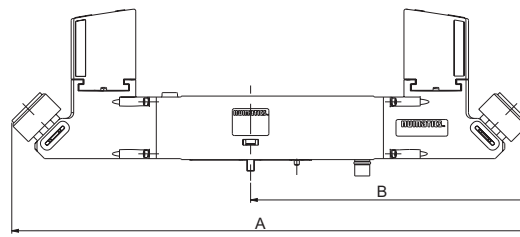
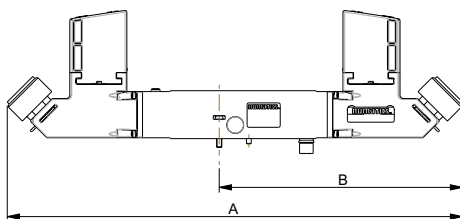
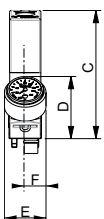
502 Series



503 Series

Double Regulator

⚠ No usable for ATEX

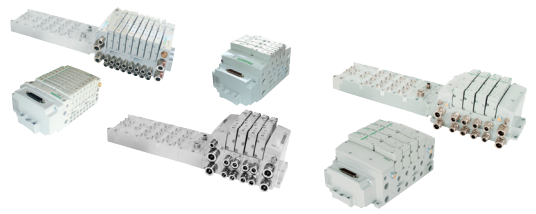


HOW TO ORDER

Consult the online configurator - CAD files on: www.asco.com

	A	B	C	D	E	F
502	261,2	139,6	73,5	35,6	23,9	11,95
503	268,2	144,1	78,2	34,8	26	13

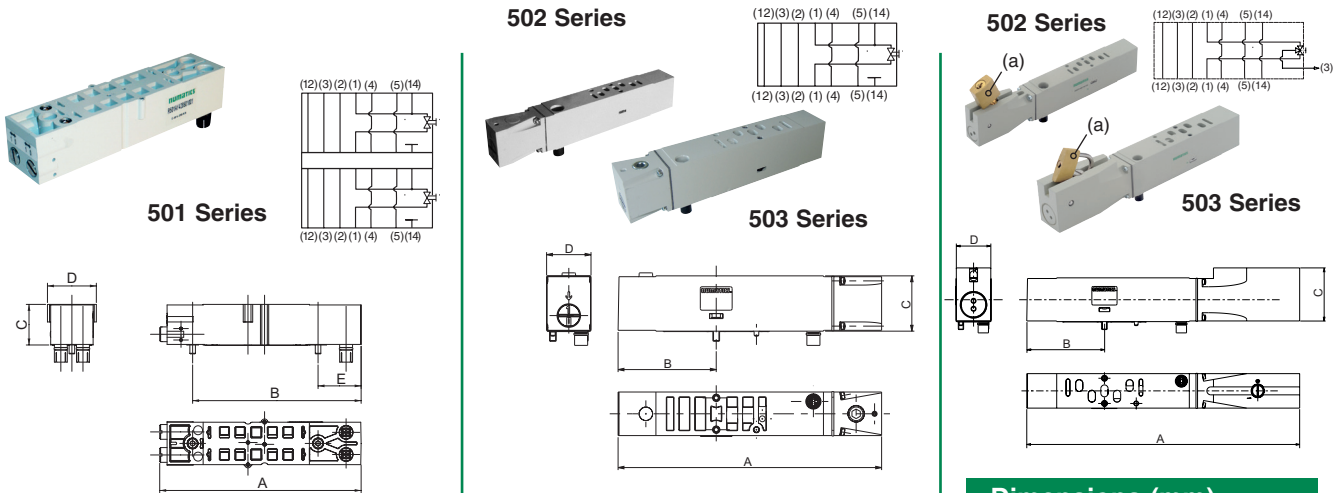
All leaflets are available on: www.asco.com



501, 502 and 503 series

Sandwich shut off block (501-502-503 Series)

- Used to shut-off pressure to the valve which is mounted above it.
- Allows easy maintenance without the need to shut-off pressure to the whole manifold. (specified for 2x3/2 NC-NC valve)



Usable only for internal pilot supply island

Pay attention to residual pressures

The valve(s) should not be energised during disassembly

Dimensions (mm)

	A	B	C	D
502	171	51	32,7	18,5
503	205,8	58,6	40,5	26

(a) The Lock is in not included with this accessory.

Dimensions (mm)					
	A	B	C	D	E
501	109,2	91,35	22	26,5	23,35
502	147,2	50,5	27,5	18,5	-
503	157,3	58,6	33	26,5	-

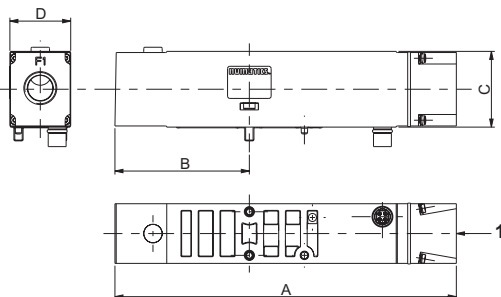
	15-DIGIT PRODUCT CODE	Description	weight (kg)
501	R501AY428501001	Sandwich shut off block (double)	0,11
502	R502AY429409002	High Flow - Sandwich shut off block	0,145
503	R503AY426707002	Sandwich shut off block	0,237
502	R502AY429409001	ISO 15407-2 - Sandwich shut off block	0,145
503	R503AY426707001	Sandwich shut off block	0,237
502	R502AY429409004	ISO 15407-2 - Lockable shut off block	0,176
503	R503AY426707003	Sandwich shut off block	0,352

HOW TO ORDER

Consult the online configurator - CAD files on: www.asco.com

Sandwich pressure block (502-503 Series)

- Used to supply a separate pressure to a single valve station without needing blocking disks.



	weight (kg)
502	0,118
503	0,208

HOW TO ORDER

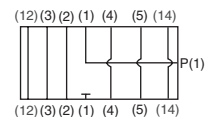
Consult the online configurator - CAD files on: www.asco.com

502 Series



503 Series

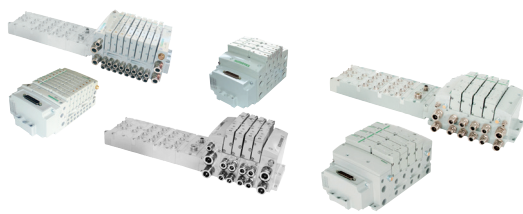
⚠ No usable for ATEX



Dimensions (mm)

	A	B	C	D
502	147,2	50,5	27,5	18,5
503	148,8	58,6	33	26,5

	15-DIGIT PRODUCT CODE	Port Type	Description
502	G502AW428685004	G 1/4	High Flow Sandwich pressure block
503	G503AW428300004	G 1/4	Sandwich pressure block
502	G502AW428685003	G 1/4	ISO 15407-2 Sandwich pressure block
503	G503AW428300003	G 1/4	Sandwich pressure block



501, 502 and 503 series

Sandwich exhaust block (502-503 Series)

- Used to isolate the exhaust of a single valve station from the manifold.
- Allows faster exhaust response by re-routing.
- Exhaust externally to the manifold.

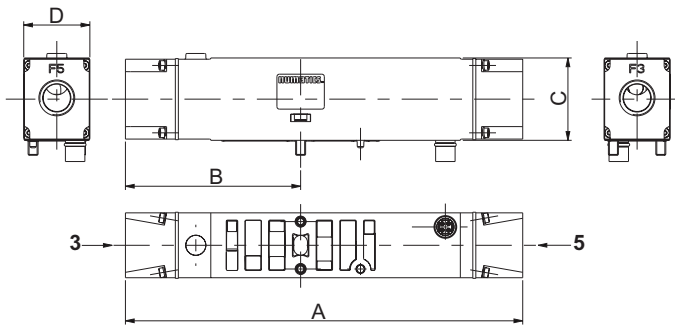
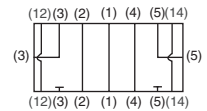
Série 502



⚠ No usable for ATEX



Série 503



	weight (kg)
502	0,133
503	0,241

Dimensions (mm)

	A	B	C	D
502	138,4	60,2	27,5	18,5
503	159,2	70,2	33	26,5

HOW TO ORDER

Consult the online configurator - CAD files on: www.asco.com

	15-DIGIT PRODUCT CODE	Port Type	Description
502	G502AX428685002	G 1/4	High Flow Sandwich exhaust block
503	G503AX428300002	G 1/4	
502	G502AX428685001	G 1/4	ISO 15407-2
503	G503AX428300001	G 1/4	Sandwich exhaust block

Sandwich individual pilot block (502-503 Series)

- Used to supply a separate piloting external pressure.

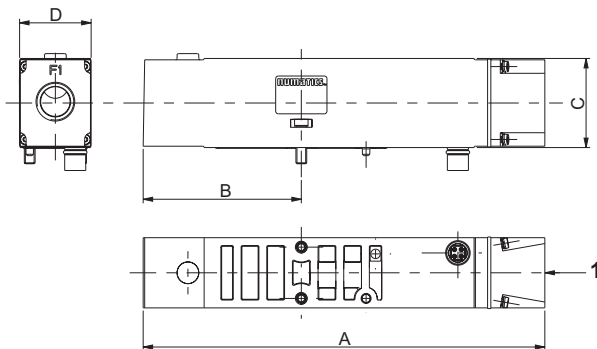
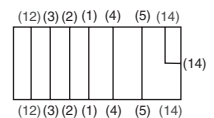
502 Series



⚠ No usable for ATEX



503 Series



	weight (kg)
502	0,118
503	0,208

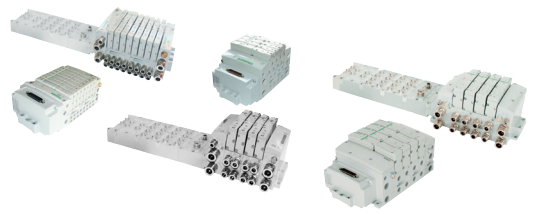
Dimensions (mm)

	A	B	C	D
502	147,2	50,5	27,5	18,5
503	148,8	58,6	33	26,5

HOW TO ORDER

Consult the online configurator - CAD files on: www.asco.com

	15-DIGIT PRODUCT CODE	Port Type	Description
502	G502AP428685006	G 1/4	High Flow Sandwich individual pilot block
503	G503AP428300006	G 1/4	
502	G502AP428685005	G 1/4	ISO 15407-2
503	G503AP428300005	G 1/4	Sandwich individual pilot block

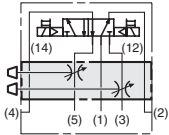
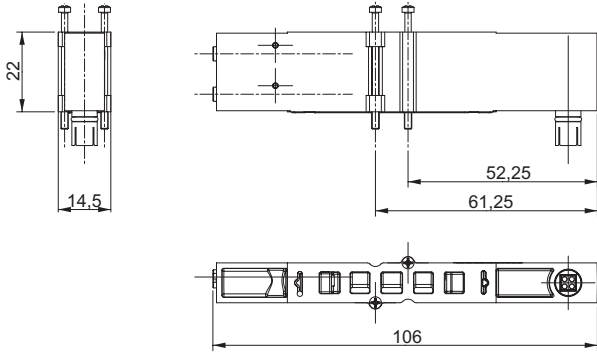


Sandwich speed control kit (501-502-503 Series)



501 Series

⚠ No usable for ATEX



	weight (kg)
501	0,055
502	0,139
503	0,248

HOW TO ORDER

Consult the online configurator - CAD files on: www.asco.com

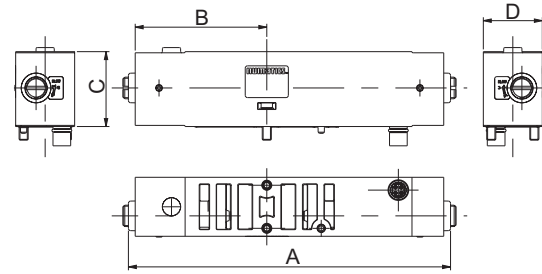
Séries 502



⚠ No usable for ATEX



503 Series



Dimensions (mm)

	A	B	C	D
502	124	51	27,5	18,5
503	142	58	33	26

	15-DIGIT PRODUCT CODE	Description
501	R501AS428500001	Sandwich Speed Control
502	R502AS429395002	High Flow - Sandwich Speed Control
503	R503AS425575002	Sandwich Speed Control
502	R502AS429395001	ISO 15407-2 - Sandwich Speed Control
503	R503AS425575001	ISO 15407-2 - Sandwich Speed Control

Sandwich individual pilot air block per zone (502-503 Series)

- Must be use with subbase with digit 83H and 83J.

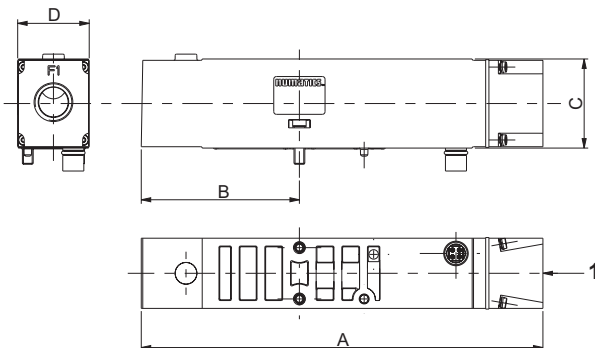
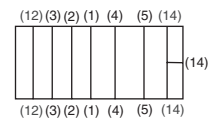
502 Series



⚠ No usable for ATEX



503 Series



	weight (kg)
502	0,118
503	0,208

HOW TO ORDER

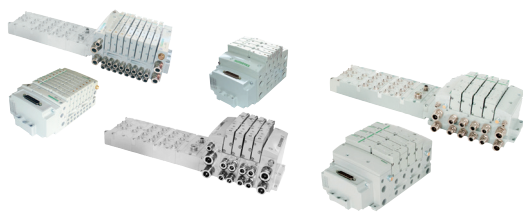
Consult the online configurator - CAD files on: www.asco.com

Dimensions (mm)

	A	B	C	D
502	147,2	50,5	27,5	18,5
503	148,8	58,6	33	26,5

	15-DIGIT PRODUCT CODE	Port Type	Description
502	G502AP428685008	G 1/4	High Flow Sandwich individual pilot air block per zone
503	G503AP428300008	G 1/4	Sandwich individual pilot air block per zone
502	G502AP428685007	G 1/4	ISO 15407-2 Sandwich individual pilot air block per zone
503	G503AP428300007	G 1/4	ISO 15407-2 Sandwich individual pilot air block per zone

All leaflets are available on: www.asco.com



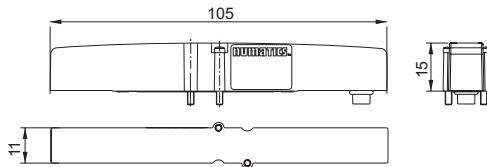
501, 502 and 503 series

Blank station plate kit (501-502-503 Series)

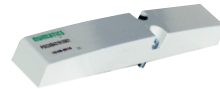
- Used to block off a manifold station block for future use



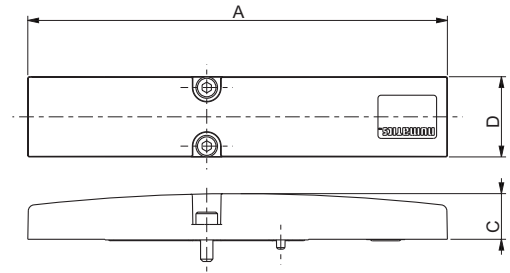
501 Series



Série 502



Série 503



Dimensions (mm)

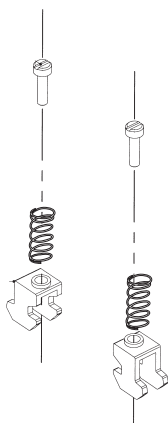
	A	C	D
502	120	15	18,5
503	136	14,8	26

	weight (kg)
501	0,027
502	0,058
503	0,084

	15-DIGIT PRODUCT CODE	Description
501	P501AB429685001	Blank station plate kit
502	P502AB431813001	
503	P503AB428359001	

DIN Rail Clamp Kit (501-502-503 Series)

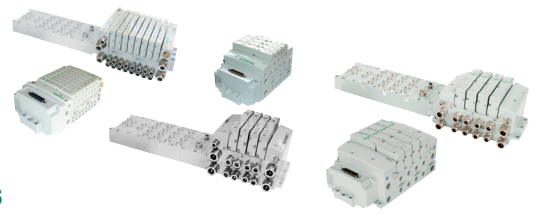
239-980



Blocking Discs

	Port	15-DIGIT PRODUCT CODE		
		503	502	501
+	1	P503AD431191001	P502AD431914001	P501AD431915001
+	3	P503AD431191002	P502AD431914002	P501AD431915002
+	5	P503AD431191003	P502AD431914003	P501AD431915003
+ +	1 + 3	P503AD431191004	P502AD431914004	P501AD431915004
+ +	1 + 5	P503AD431191005	P502AD431914005	P501AD431915005
+ +	3 + 5	P503AD431191006	P502AD431914006	P501AD431915006
+ + + +	1, 3, 5	P503AD431191007	P502AD431914007	P501AD431915007

502-503 Series: External pilot only.



501, 502 and 503 series

End Plate Kit - Threaded ports

501 Series

w/o muffler



w/ muffler

⚠ No usable for ATEX



502 Series

w/o muffler



w/ muffler

⚠ No usable for ATEX



Thread connection	G			Push-in connectors			
	Port	1	3/5	12/14	1	3/5	12/14
Port Size	1/8	1/8	M7	8 mm	8 mm	M7	
w/o muffler, w/o DIN	G501AK429465009			K501AK429465011			
w/o muffler, w/DIN	G501AK429465010			K501AK429465012			
w/ muffler, w/o DIN	G501AK429465013			K501AK429465015			
w/ muffler, w/DIN	G501AK429465014			K501AK429465016			

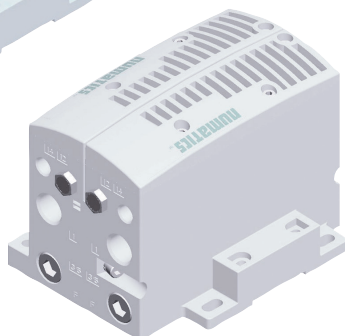
Thread connection	G			Push-in connectors			Push-in connectors			
	Port	1	3/5	12/14	1	3/5	12/14	1	3/5	12/14
Port Size	3/8	3/8	1/8	10 mm	10 mm	6 mm	12 mm	12 mm	6 mm	
w/o muffler, w/o DIN	G502AK431477013			K502AK431477017			K502AK431477015			
w/o muffler, w/DIN	G502AK431477014			K502AK431477018			K502AK431477016			
w/ muffler, w/o DIN	G502AK431477019			K502AK431477023			K502AK431477021			
w/ muffler, w/DIN	G502AK431477020			K502AK431477024			K502AK431477022			

503 Series

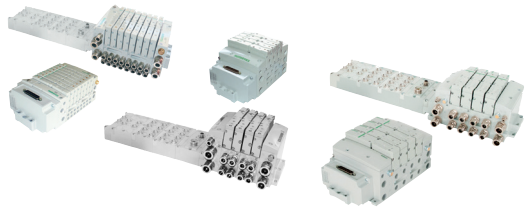
w/o muffler



w/ muffler



Thread connection	G			Push-in connectors			Push-in connectors			
	Port	1	3/5	12/14	1	3/5	12/14	1	3/5	12/14
Port Size	3/8	3/8	1/8	10 mm	10 mm	6 mm	12 mm	12 mm	6 mm	
w/o muffler, w/o DIN	G503AK428327013			K503AK428327015			K503AK428327017			
w/o muffler, w/DIN	G503AK428327014			K503AK428327016			K503AK428327018			
w/ muffler, w/o DIN	G503AK428327019			K503AK428327021			K503AK428327023			
w/ muffler, w/DIN	G503AK428327020			K503AK428327022			K503AK428327024			



501 and 502 series

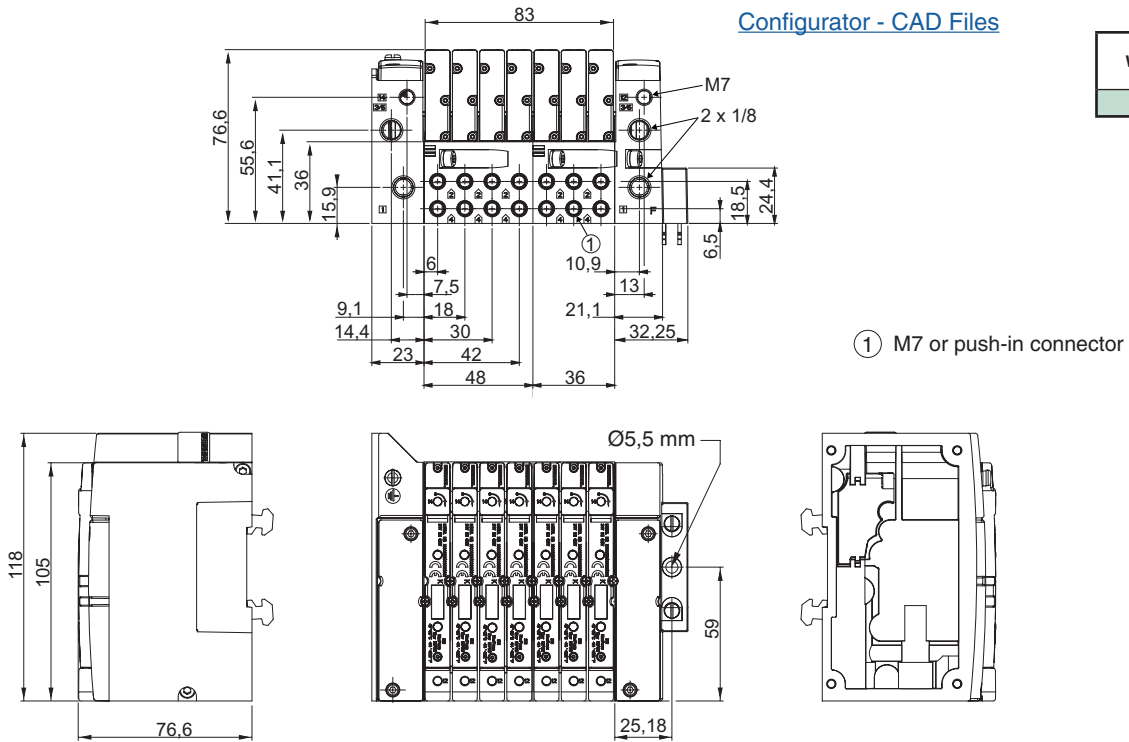
Manifold Assembly

Dimensions (mm)

501

[Configurator - CAD Files](#)

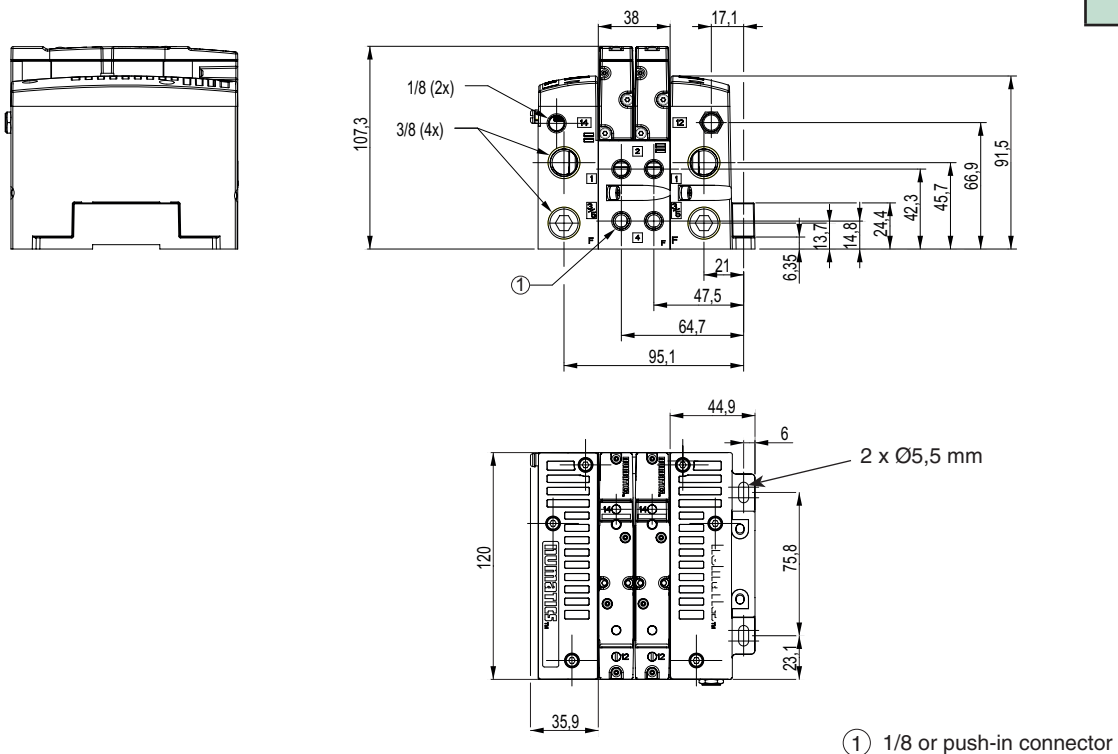
weight (kg)
1,85

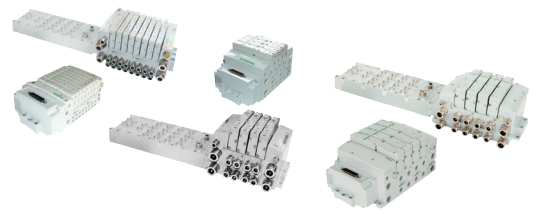


502

[Configurator - CAD Files](#)

weight (kg)
1,65



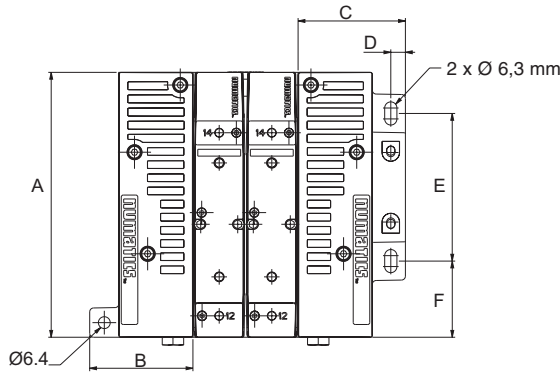


Manifold Assembly

Dimensions (mm)

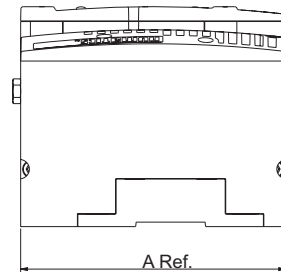
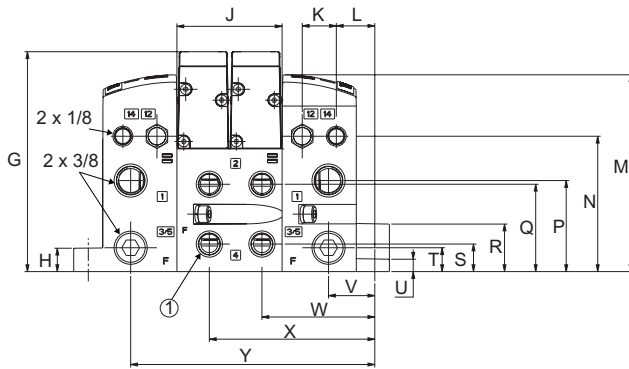
503

[Configurator - CAD Files](#)

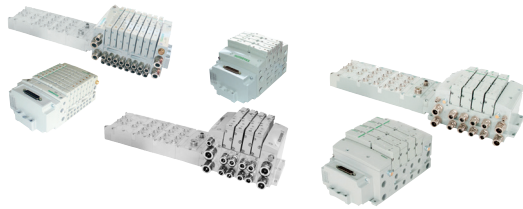


weight (kg)
2,45

① 1/4 or push-in connector

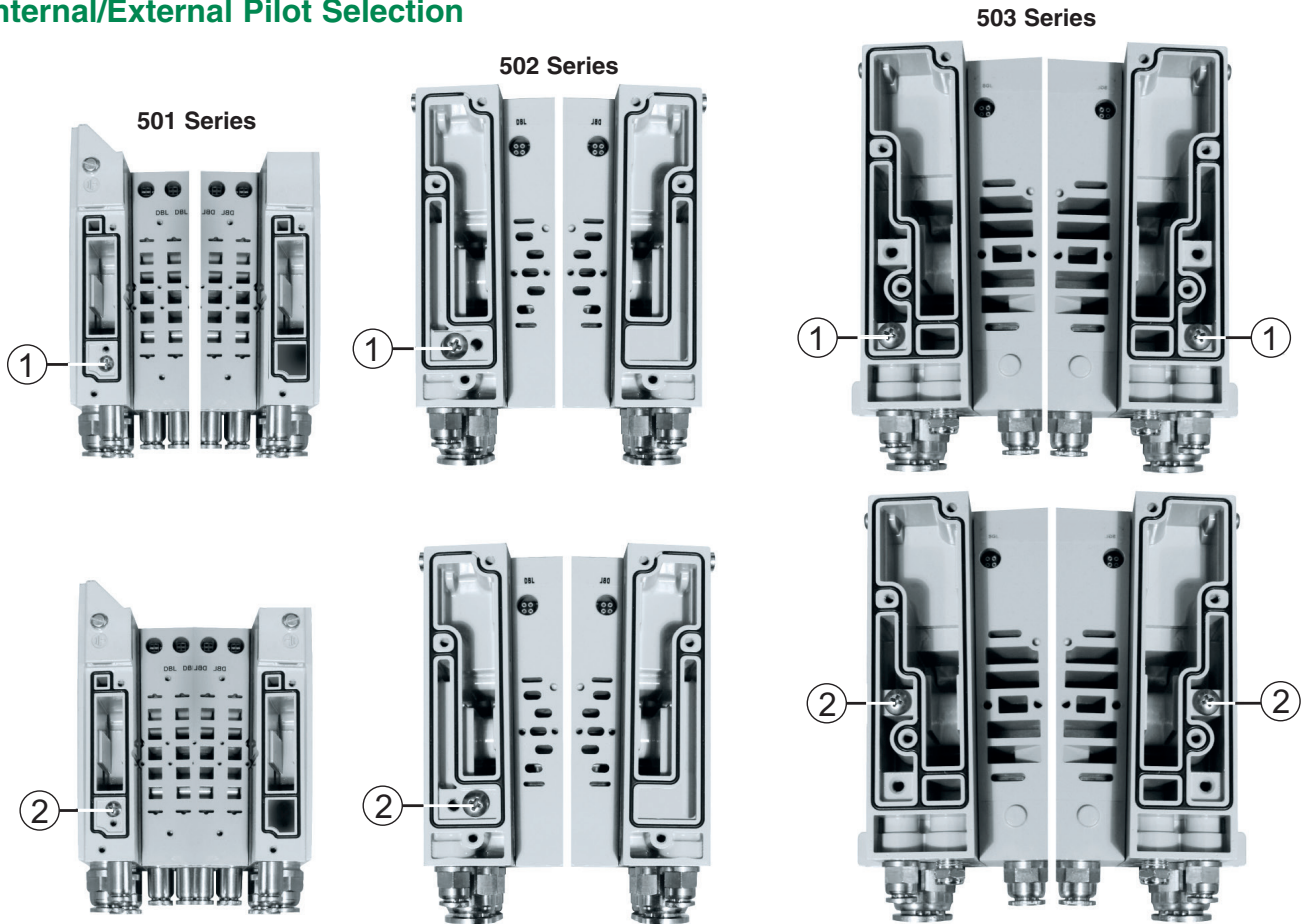


A	B	C	D	E	F	G	H	J	K	L	M	N	P	Q	R	S	T	U	V	W	X	Y
136	53	55.1	7.5	75.8	39.1	112.9	12	54	17.5	19.8	101.1	69.5	46.8	44.9	24.4	14.2	12.3	6.4	23.8	58	85	125.4



501, 502 and 503 series

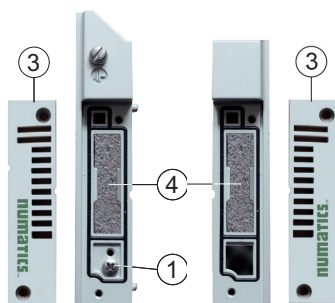
Internal/External Pilot Selection



Internal Muffler

501 Series

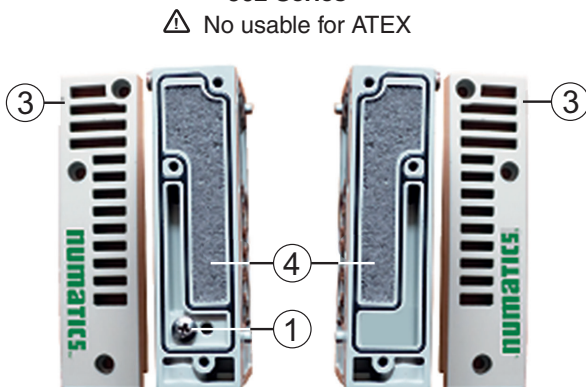
⚠ No usable for ATEX



- ① Position of the screw - For Internal Pilot (factory setting)
- ② Position of the screw - For External Pilot
- ③ Vented Cover
- ④ Muffler

502 Series

⚠ No usable for ATEX



503 Series

