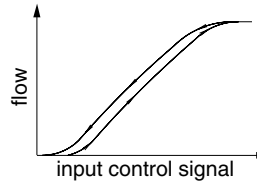


FEATURES

- Variable flow, proportional to the applied current
- Inlet Pressure Compensated construction (IPC)
- Valves do not require a minimum operating pressure
- 2/2 NC function: fluid entry under the disc
- The solenoid valves satisfy all relevant EC directives



GENERAL

| | |
|-------------------------------|--|
| Differential pressure | See «SPECIFICATIONS» [1 bar = 100 kPa] |
| Max. backpressure | 10% of inlet pressure |
| Max. overload pressure | 10 bar |
| Maximum viscosity | 50 cSt (mm ² /s) |

| fluids (*) | temperature range (TS) | seal materials (*) |
|-------------------------------|------------------------|-----------------------|
| air, inert gas ⁽¹⁾ | +10°C to +50°C | FPM (fluoroelastomer) |

⁽¹⁾ Filtration: 5 µm



MATERIALS IN CONTACT WITH FLUID

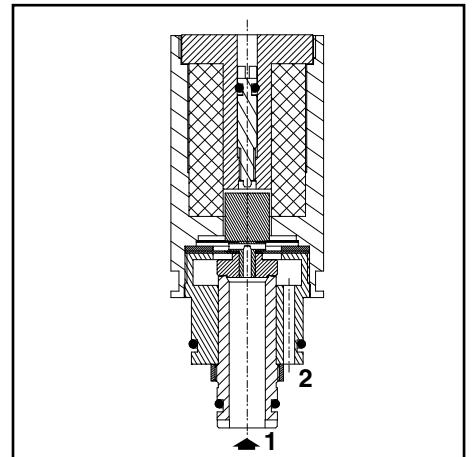
(*) Ensure that the compatibility of the fluids in contact with the materials is verified

| | |
|-------------------------|--|
| Body | Brass or stainless steel or POM (pad-mount version) |
| Core and plugnut | Stainless steel |
| Springs | Stainless steel |
| Seat | Stainless steel |
| Seals | FPM, NBR |
| Disc | FPM |

ELECTRICAL CHARACTERISTICS

| | |
|--|--|
| Coil insulation class | F |
| Connection | Cable leads (PTFE); 0,23 m length (AWG 24) |
| Electrical safety | IEC 335 |
| Electrical enclosure protection | IP40 (EN 60529) |
| Standard voltages | DC (=) : 6V - 12V - 24V |

(other voltages on request)



| prefix option | voltage (V) = | current consumption (mA) | power ratings | | | operator ambient temperature range (TS) (C°) | type ⁽¹⁾ |
|---------------|------------------|-----------------------------|---------------------|----------------------|----------------------|---|---------------------|
| | | | inrush ~ (VA) | holding ~ (VA) | hot/cold = (W) | | |
| L | 6 | max. 420 | - | - | - | +10 to +50 | 01 |
| | 12 | max. 210 | - | - | 2,5 | | |
| | 24 | max. 110 | - | - | 2,5 | | |

⁽¹⁾ Refer to the dimensional drawings on the following page.

| | |
|--|---|
| Voltage regulation | 0 - 6 V DC, 0 - 12 V DC, 0 - 24 V DC 6 V, 12 V and 24 V DC pulse-width modulated (2000 Hz) |
| Flow regulation characteristics | Hysteresis < 5%; Repeatability 1%; Sensitivity < 1% |

SPECIFICATIONS

| pipe size | orifice size (mm) | flow coefficient Kv (m ³ /h) (l/min) | | operating pressure differential (bar) | | | power coil (W) | catalogue number | | |
|-----------------------------|----------------------|---|-----|---------------------------------------|-------------------------|-----|-------------------|------------------|------------------------|------------------|
| | | | | min. | max. (PS) | | | brass (=) | stainless steel (=) | POM (=) |
| | | | | | air, inert gas (*) = | | | | | |
| NC - Normally closed | | | | | | | | | | |
| G 1/8 | 3 | 0,17 | 2,8 | 0 | 7 | 2,5 | LG202A514 | - | - | - |
| 13,9 mm cartridge | 3 | 0,17 | 2,8 | 0 | 7 | 2,5 | - | LS202A515 | - | - |
| pad mounting | 3 | 0,17 | 2,8 | 0 | 7 | 2,5 | - | - | - | LS202A516 |

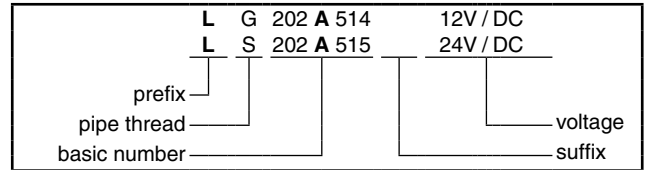
OPTIONS

- Digital control module CONTROL^D for DIN EN 50022 rail mounting (catalogue numbers: **60300117 - 60300118**)
 - Features:
 - Control device for PWM (pulse-width modulated) proportional valve control
 - Designed for open-loop, closed-loop and double-loop (cascaded) control
 - Suitable for the control of flow, pressure, temperature, force etc.
 - Integrated display and LEDs
 - Control parameters adjustable via software (DigiCom, USB interface)
 - Auto-Adapt function/button for automatic adjustment of the CONTROL^D control device to the control valve
 - CONTROL^D software, „ASCO-DigiCom“ for adjustment over PC. Setpoint and feedback values are viewed at the same time
 - Valve diagnostics, parameter setting and maintenance
 - Other pipe connections are available on request

INSTALLATION

- The solenoid valves can be mounted in any position without affecting operation
- Pipe connection identifier is G = G (ISO 228/1)
- Installation/maintenance instructions are included with each valve

ORDERING EXAMPLES:

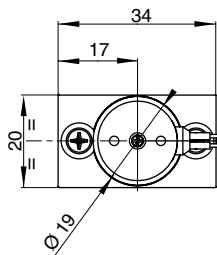
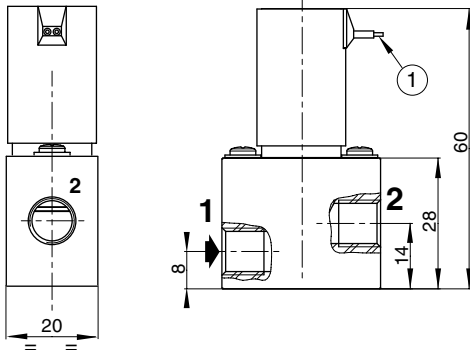


DIMENSIONS (mm), WEIGHT (kg)

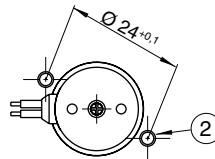
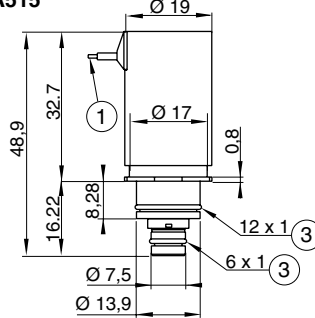


TYPE 01
 Prefix "L" Solenoid
 Cable ends
 IP40

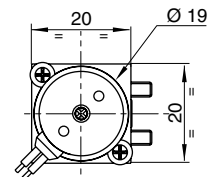
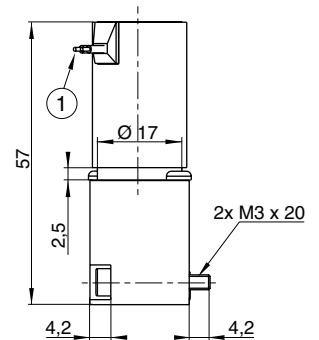
LG202A514



LS202A515



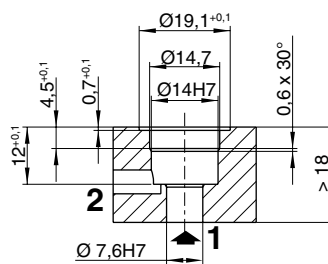
LS202A516



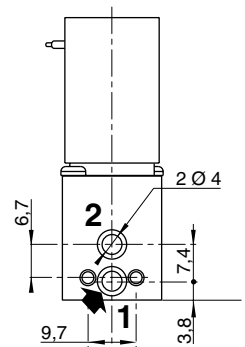
- ① 2 electrical supply wires, length: 0,23 m.
- ② Mounting: 2 screws M3 x 6 mm + washers
- ③ O-Ring

| type | prefix option | catalogue number | weight ⁽¹⁾ |
|------|---------------|------------------|-----------------------|
| 01 | L | LG202A514 | 0,183 |
| | | LS202A515 | 0,063 |
| | | LS202A516 | 0,073 |

⁽¹⁾ Including leads, length 0,23 m.



Mounting geometry



Mounting pad