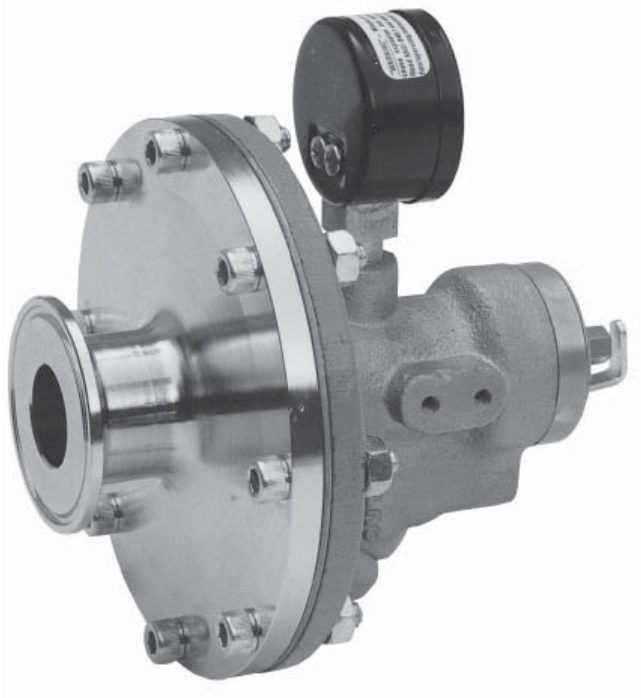


## MODEL 764P-37

### SANITARY PRESSURE CONTROLLER

The Model 764P-37 Controller includes a SST sensing head with a 1" Tri-Clamp® process connection. It is designed for use in clean steam and other sanitary biotechnological process piping systems. The Model 764P-37 measures the controlled pressure and develops a pneumatic output signal that varies linearly as the controlled pressure changes. Controls process pressures between 1-30, 20-100, and 30-150 psig.



**MODEL 764P-37**

### FEATURES

- Adjustments:** Proportional band and setpoint.
- Field Reversible:** Easily changed from direct acting to reverse acting.
- Small Size:** Easily supported by process piping.
- Gauge:** 1-1/2" (38mm) output signal gauge.
- Wetted Materials Construction:** 316 SST. Standard Unit is cleaned to Spec. #S-1576, Process side only.

Please refer to the Model 764P/PD Product Coder to build a code for Opt.-37 when placing an order.

# SPECIFICATIONS

**Sensing Diaphragm:** 316 SST wetted parts.

**Diaphragm Cas-  
ing  
Materials:** Ductile Iron — ASTM A395  
316 SST — ASTM A479.

**Diaphragm  
O-ring Seal:** TFE.

**Control Ranges &  
Maximum Static  
Pressure:**

Control Range		Maximum Static Pressure	
psig	(Barg)	psig	(Barg)
1-30	(.07-2.1)	250	(17.2)
20-100	(1.4-6.9)	300	(20.7)
50-150	(3.5-10.3)	300	(17.2)

**Ambient Temp  
Range:** -20° to 180°F (-28.5° to 82.5°C).

**Sensing Temp  
Range:** Buna-N: -20 to 212°F (-28.5° to 100°C)  
FKM: -20 to 400°F (-28.5° to 204.4°C)  
Note: Some options and materials may further alter temperature limits.

**Control Housing  
Sub-Assembly:** Brass housing, FKM Seals  
SST adjusting screw.

**Output Signal:** 3-15 psig (0.2-1.03 Barg).

**Supply Pressure:** 18-20 psig (1.2-1.4 Barg).

**Output Signal  
Gauge:** 0-30 psig (0-2.1 Barg).

**Proportional  
Band:** Adjustable 3-30% of sensing dia-  
phragm span with 18-20 psig (1.2-1.4  
Barg) supply.

**Steady State Air  
Consumption:**

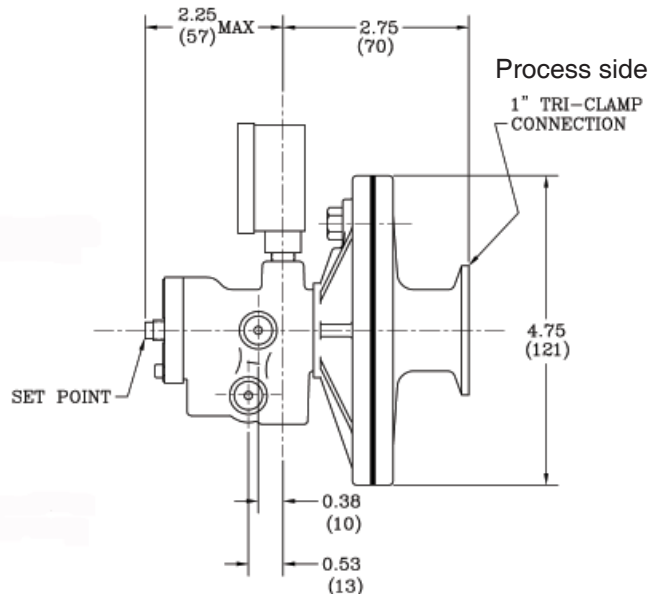
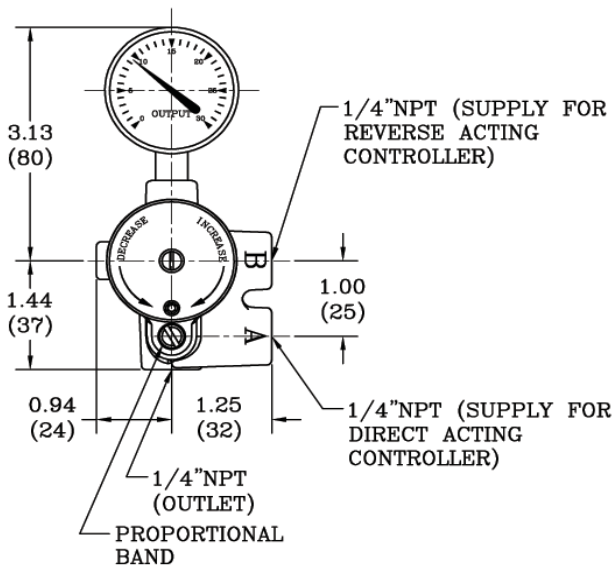
Flow Rate*		Prop. Band
SCFH	M <sup>3</sup> /Hr @ MSC	%
4.2	(0.12)	3
50	(1.21)	20

\*Mid-span at proper supply pres-  
sure.

**Supply and  
Output Signal  
Connections:** 1/4" NPT female pipe connections.

**Sensitivity:** Better than 0.05% of sensing dia-  
phragm span.

**Repeatability:** ±0.2% of sensing diaphragm span.



Dimensions: in (mm)  
Shipping Weight: 5 lbs. (2.27 kg.)

The contents of this publication are presented for informational purposes only, and while every effort has been made to ensure their accuracy, they are not to be construed as warranties or guarantees, express or implied, regarding the products or services described herein or their use or applicability. We reserve the right to modify or improve the designs or specifications of such product at any time without notice. Cashco, Inc. does not assume responsibility for the selection, use or maintenance of any product. Responsibility for proper selection, use and maintenance of any Cashco, Inc. product remains solely with the purchaser.

Cashco, Inc.  
P.O. Box 6  
Ellsworth, KS 67439-0006  
PH (785) 472-4461  
Fax. # (785) 472-3539  
www.cashco.com  
email: sales@cashco.com  
Printed in U.S.A. 764P-37-TB

Cashco GmbH  
Handwerkerstrasse 15  
15366 Hoppegarten, Germany  
PH +49 3342 30968 0  
Fax. No. +49 3342 30968 29  
www.cashco.com  
email: germany@cashco.com

Cashco do Brasil, Ltda.  
Al.Venus, 340  
Indaiatuba - Sao Paulo, Brazil  
PH +55 11 99677 7177  
Fax. No.  
www.cashco.com  
email: brazil@cashco.com